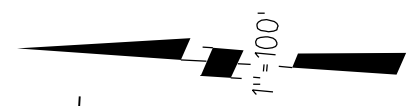


PB
74

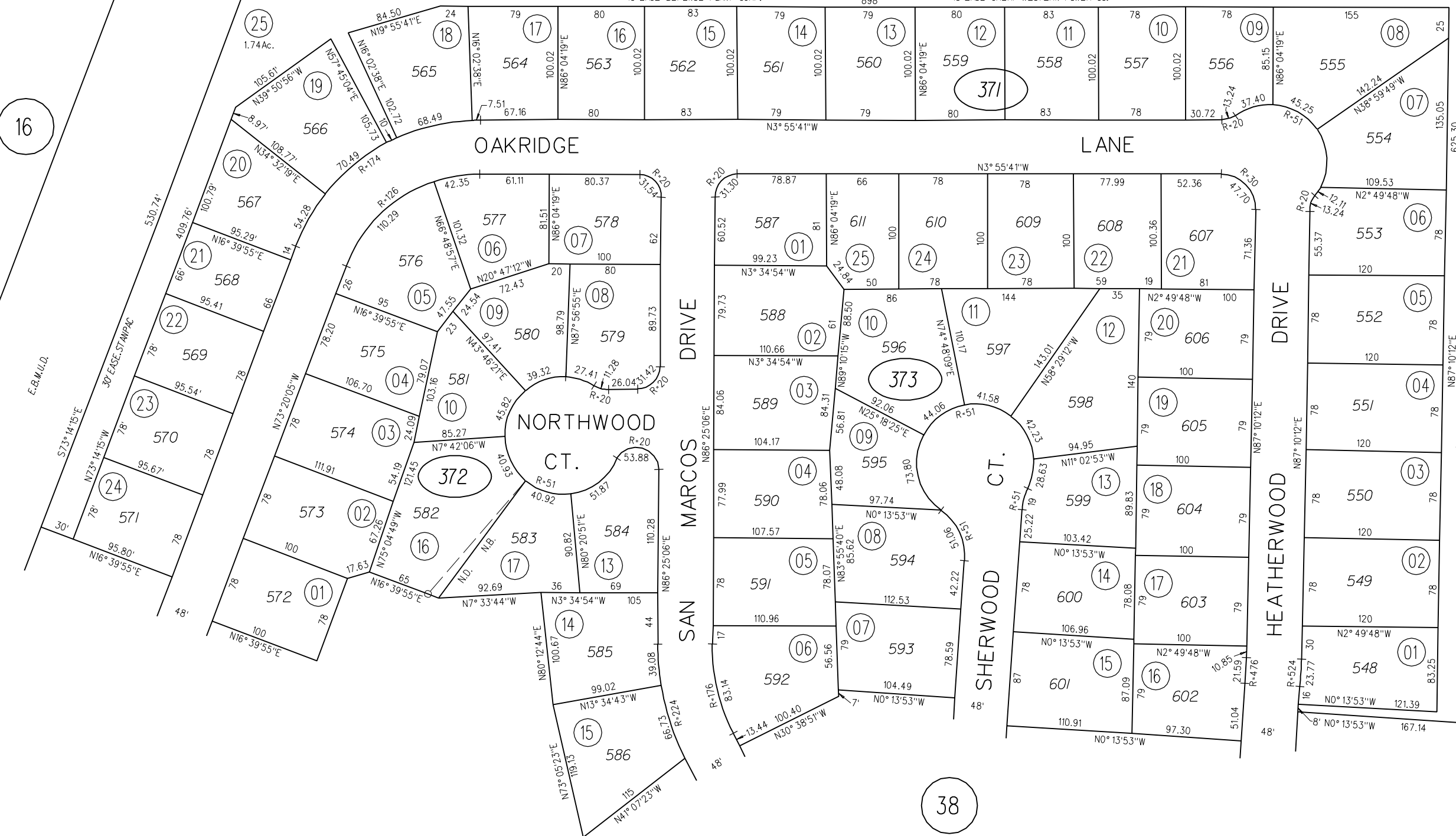
**Cert. of Correction
7416 OR 328
1-23-75**



STANDARD OIL AVE.

N3° 55' 41" W 1091.26'

PCLA 16' EASE U.S.A. 10' EASE DEFENSE PLANT CORP. 10' EASE GREAT WESTERN POWER CO.



16

PB
89

38

- 371
- 372
- 373