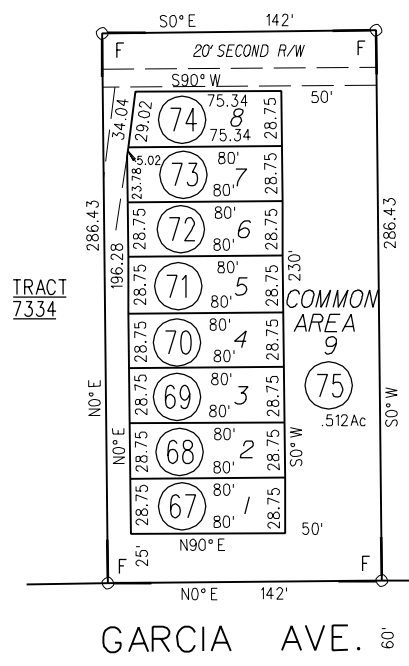
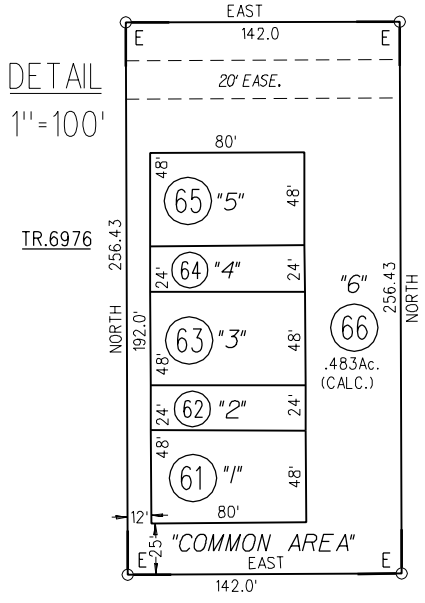


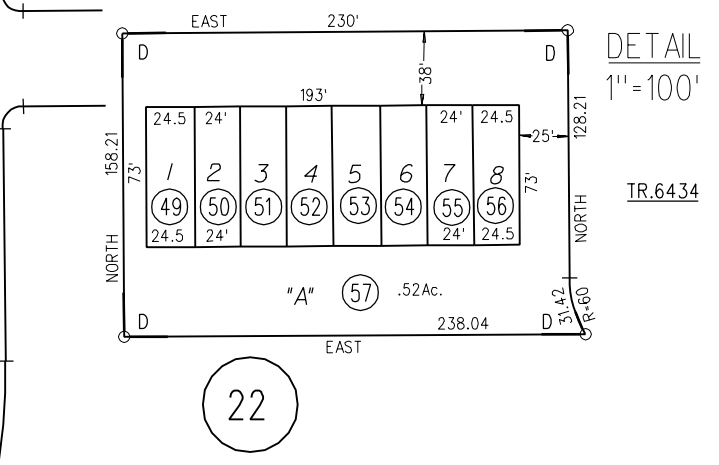
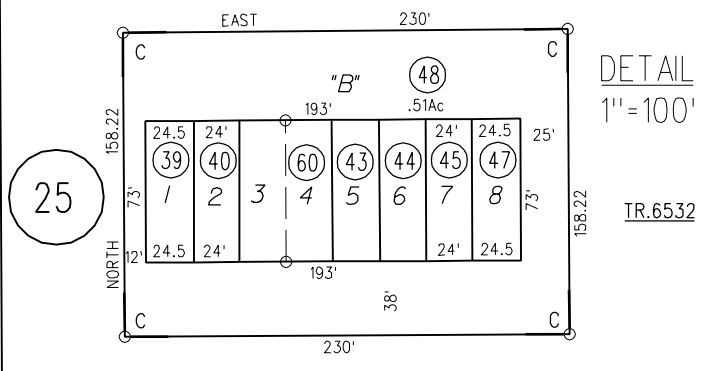
1967 ROLL OFFICIAL MAP OF CAMP STONEMAN M.B. 111-36
 1-15 P.M. 35 2-18-71 1974-2- 32P.M.11 1-28-74



P.B.
87



- 3- 35P.M.41 10-28-74
- 4- 37P.M.28 & 29 4-18-75
- 6- 79P.M.34 & 35 8-6-79
- 1980-A- TRACT 5462 (INDUSTRIAL PARK) M.B.226-20
- 1980-7- 81P.M.8 9-20-79
- 1983-B- TRACT 5956 M.B. 266-1
- 1985-C- TRACT 6532 M.B.288-4 (P.U.D.) C.C.&R'S 12797/341 3-25-86
- 1986-D- TRACT 6434 M.B. 292-28
- 1989-E- TRACT 6976 M.B.323-26(C.C.&R'S14477/323/7-11-88)
- 1990-F- TRACT 7334 M.B.339-44(P.U.D.) C.C.&R'S 15491/466-11-21-89
- 10-1991 150PM40 1-18-91
- 11-1994 164PM31 5-18-94



183
184

NOTE: THIS MAP WAS PREPARED FOR ASSESSMENT PURPOSES ONLY. NO LIABILITY IS ASSUMED FOR THE ACCURACY OF THE INFORMATION DELINEATED HEREON. ASSESSOR'S PARCELS MAY NOT COMPLY WITH LOCAL LOT SPLIT OR BUILDING SITE ORDINANCES.

SEE PAGE 1