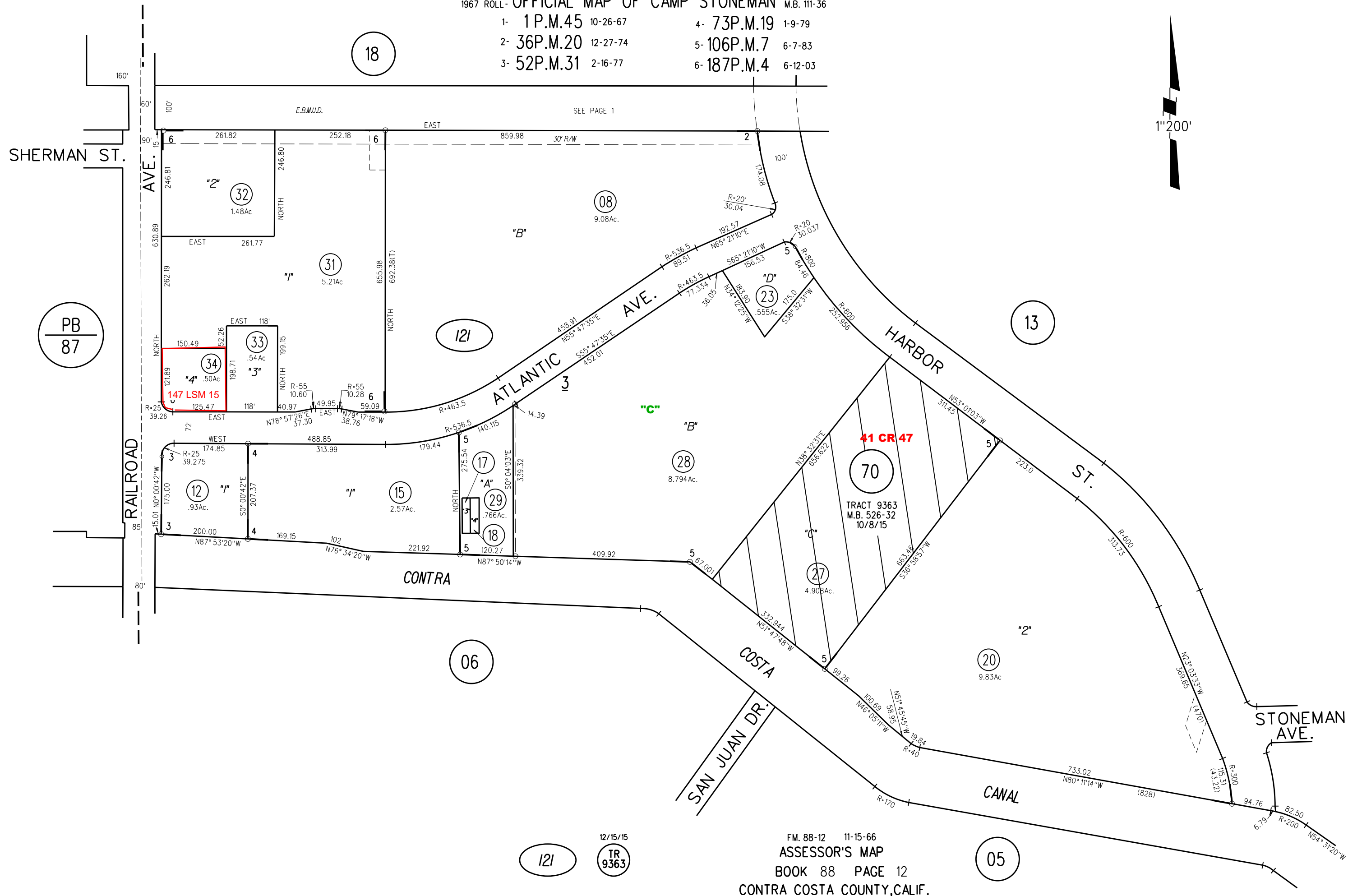
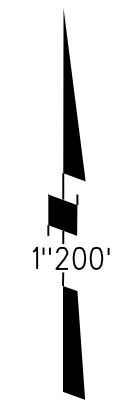


- 1- 1 P.M.45 10-26-67
- 2- 36P.M.20 12-27-74
- 3- 52P.M.31 2-16-77
- 4- 73P.M.19 1-9-79
- 5- 106P.M.7 6-7-83
- 6- 187P.M.4 6-12-03



PB  
87

147 LSM 15

41 CR 47

TRACT 9363  
M.B. 526-32  
10/8/15

12/15/15  
TR  
9363

FM. 88-12 11-15-66  
ASSESSOR'S MAP  
BOOK 88 PAGE 12  
CONTRA COSTA COUNTY, CALIF.