

B-1993 ROLL- TRACT 7666 M.B.364-08 (THE VILLAGE AT NEW YORK LANDING)

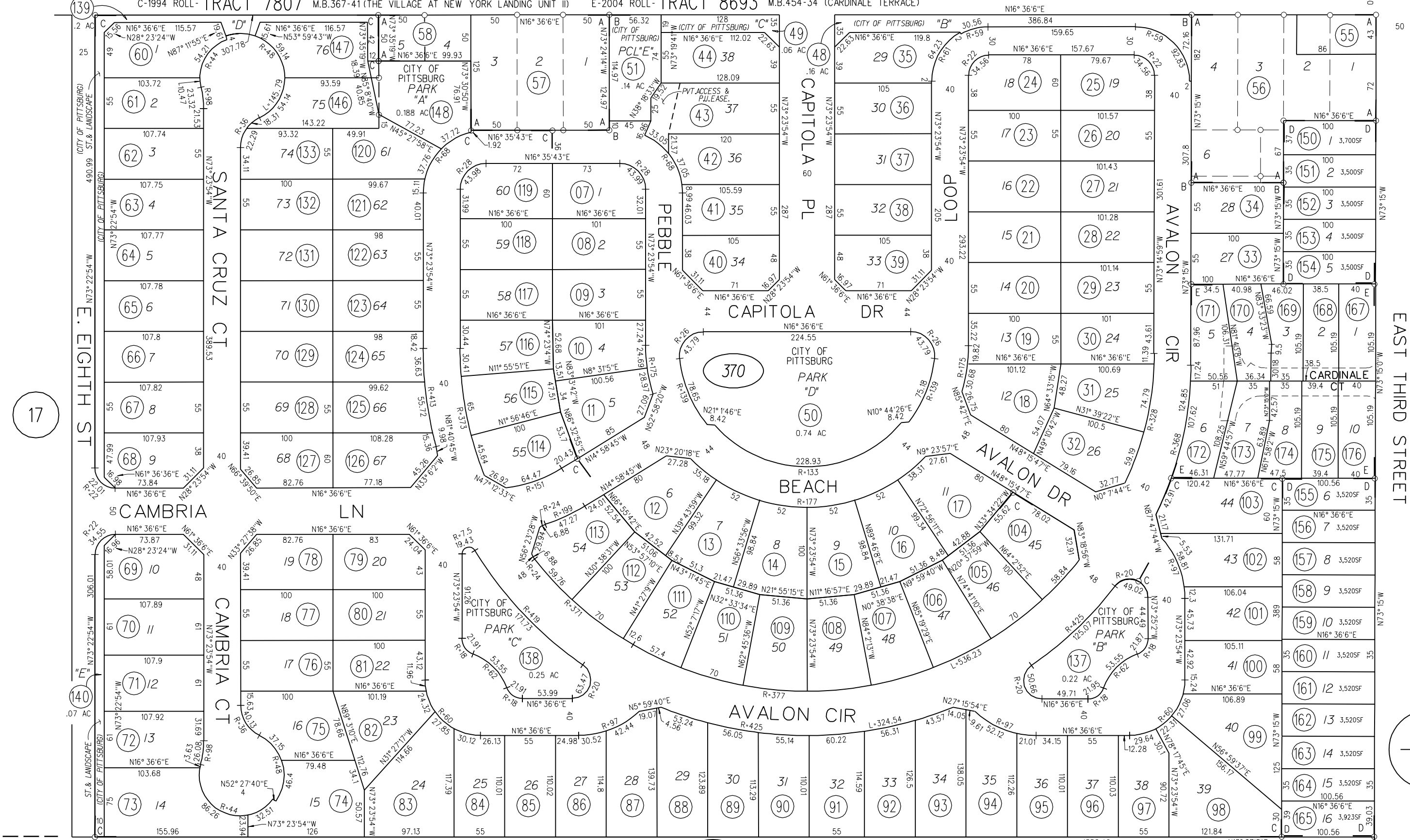
D-2003 ROLL- TRACT 8642 M.B.449-15 (RAILROAD TERRACE)

1- 163 P.M. 40 12-20-93

C-1994 ROLL- TRACT 7807 M.B.367-41 (THE VILLAGE AT NEW YORK LANDING UNIT II)

E-2004 ROLL- TRACT 8693 M.B.454-34 (CARDINALE TERRACE)

CUMBERLAND ST



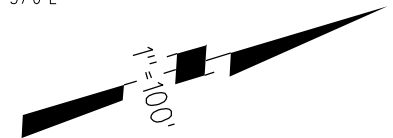
17

30

EAST THIRD STREET

73  
01

NOTE: THIS MAP WAS PREPARED FOR ASSESSMENT PURPOSES ONLY. NO LIABILITY IS ASSUMED FOR THE ACCURACY OF THE INFORMATION DELINEATED HEREON. ASSESSOR'S PARCELS MAY NOT COMPLY WITH LOCAL LOT SPLIT OR BUILDING SITE ORDINANCES.



73  
05

370

TR  
8693  
6/30/03