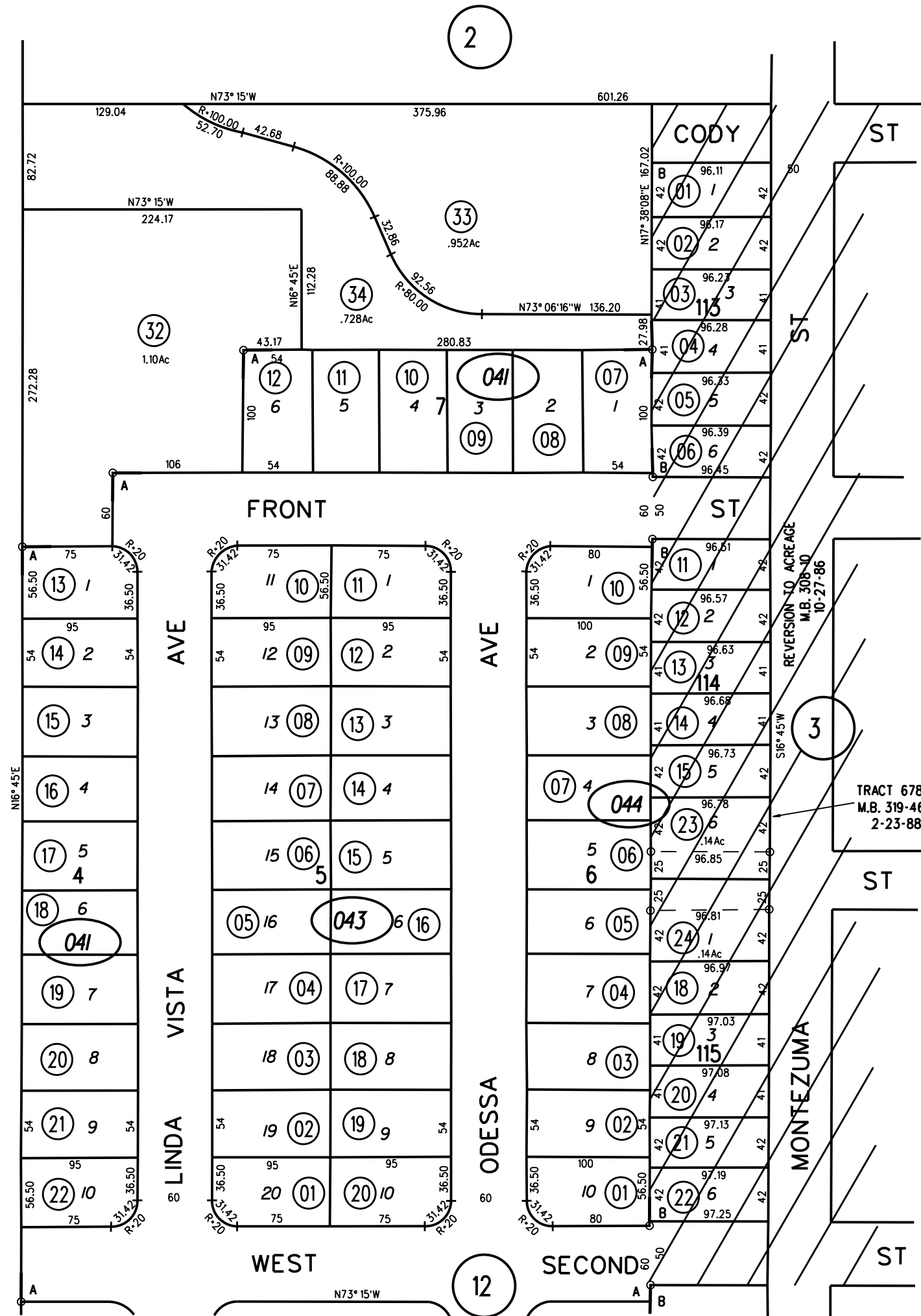
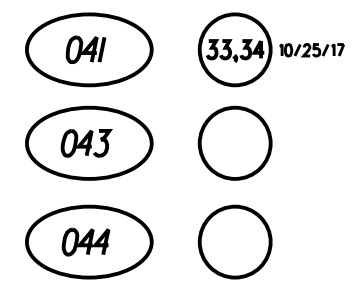
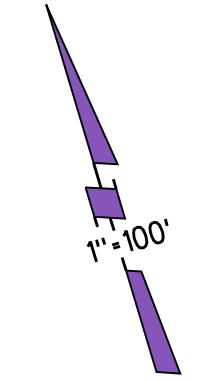


NOTE: THIS MAP WAS PREPARED FOR ASSESSMENT PURPOSES ONLY. NO LIABILITY IS ASSUMED FOR THE ACCURACY OF THE INFORMATION DELINEATED HEREON. ASSESSOR'S PARCELS MAY NOT COMPLY WITH LOCAL LOT SPLIT OR BUILDING SITE ORDINANCES.

1



A- BAYSIDE KNOLLS UNIT NO.1 M.B.38-1
 B- WEST SIDE ADD'N. NO.3 M.B.21-574
 RO. LOS MEDANOS



12-8-88
 ASSESSOR'S MAP
 BOOK 85 PAGE 04
 CONTRA COSTA COUNTY, CALIF.