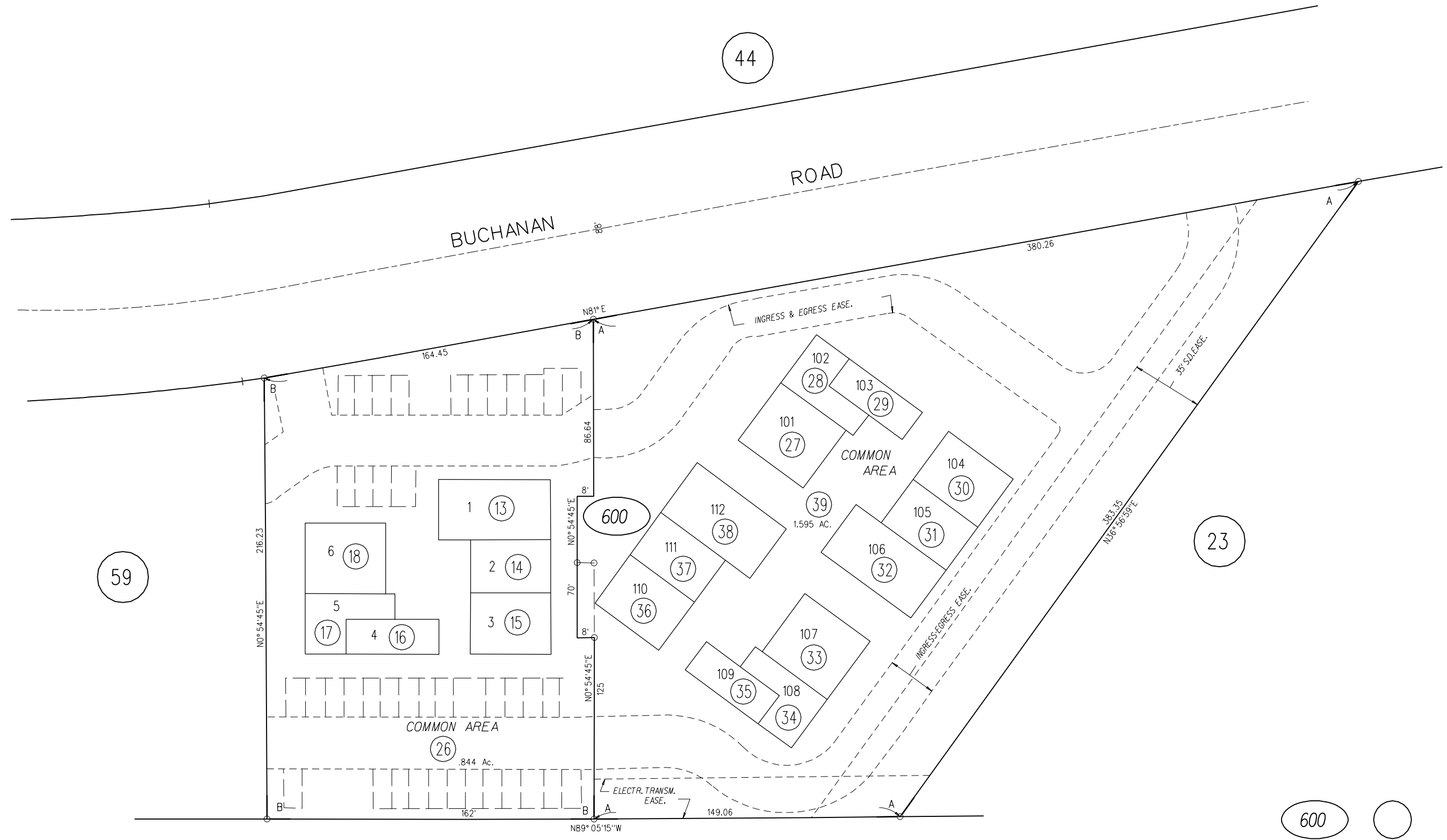


A- 1989 ROLL - TRACT 6923 "PLAZA LYNDA CONDOMINIUM - UNIT ONE R" M.B. 321-41; C.C.&R'.S 14264/281 4-11-88

B- 1987 ROLL - TRACT 6305 "PLAZA LYNDA CONDOMINIUM, UNIT TWO" M.B. 307-1 C. C. & R'S 13121/618 9-15-86



59

44

23

600

FIRST LEVEL

03

E.B.M.J.D.