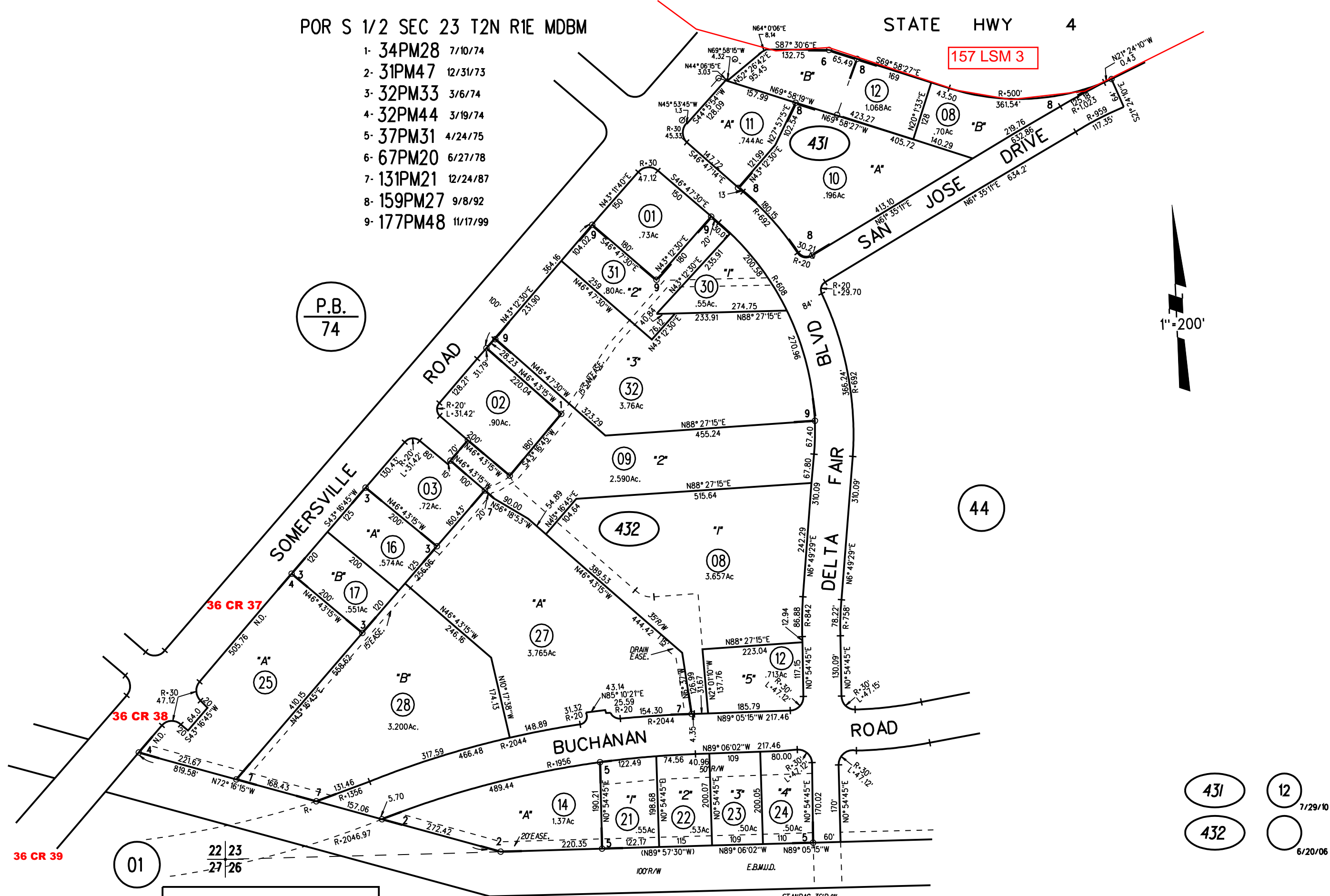
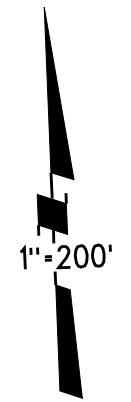


POR S 1/2 SEC 23 T2N R1E MDBM

- 1- 34PM28 7/10/74
- 2- 31PM47 12/31/73
- 3- 32PM33 3/6/74
- 4- 32PM44 3/19/74
- 5- 37PM31 4/24/75
- 6- 67PM20 6/27/78
- 7- 131PM21 12/24/87
- 8- 159PM27 9/8/92
- 9- 177PM48 11/17/99



P.B.
74



NOTE: THIS MAP WAS PREPARED FOR ASSESSMENT PURPOSES ONLY. NO LIABILITY IS ASSUMED FOR THE ACCURACY OF THE INFORMATION DELINEATED HEREON. ASSESSOR'S PARCELS MAY NOT COMPLY WITH LOCAL LOT SPLIT OR BUILDING SITE ORDINANCES.

431 12 7/29/10
432 6/20/06