

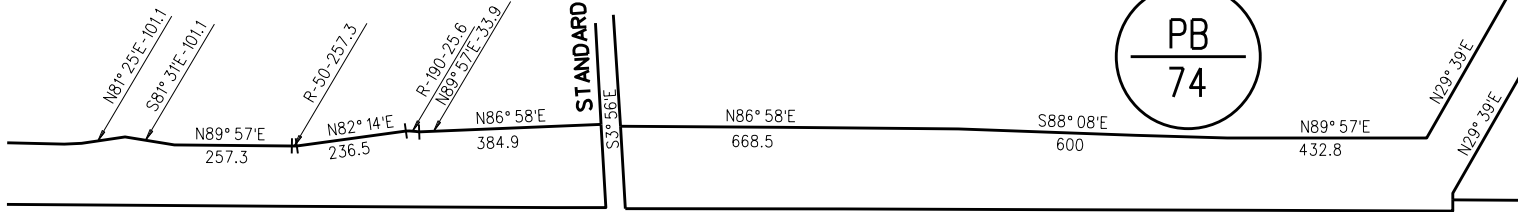
N 1/2 SEC 27 T21N R1E MDBM
POR S 1/2 SECS 22&23 T2N R1E MDBM

1-43PM35 3/9/76

2-44PM9 3/31/76

A-TRACT 6081 MB 307-42 10/9/86
(SEQUOIA BUSINESS PARK, CONDO)

STANDARD OIL AVE



1"=400'

22 23
27 26

SEE PAGE 03

BUCHANAN

COR COMMON TO SECS
BUCHANAN

(SEE APN 076-031-001)

PB
74

PB
89

PB
89

151 LSM 13

36 CR 39

158 LSM 28

CONTRA COSTA ROAD

SOMMerville

SEQUOIA DRIVE

MARKLEY CREEK

CANAL

VISTA DIABLO MOBILE HOMES

GENTRYTOWN RD

FOR M/R SEE PAGE 03
FOR THESE PCLS.

NOTE: THIS MAP WAS PREPARED FOR ASSESSMENT PURPOSES ONLY. NO LIABILITY IS ASSUMED FOR THE ACCURACY OF THE INFORMATION DELINEATED HEREON. ASSESSOR'S PARCELS MAY NOT COMPLY WITH LOCAL LOT SPLIT OR BUILDING SITE ORDINANCES.

010 38.39
11/16/15