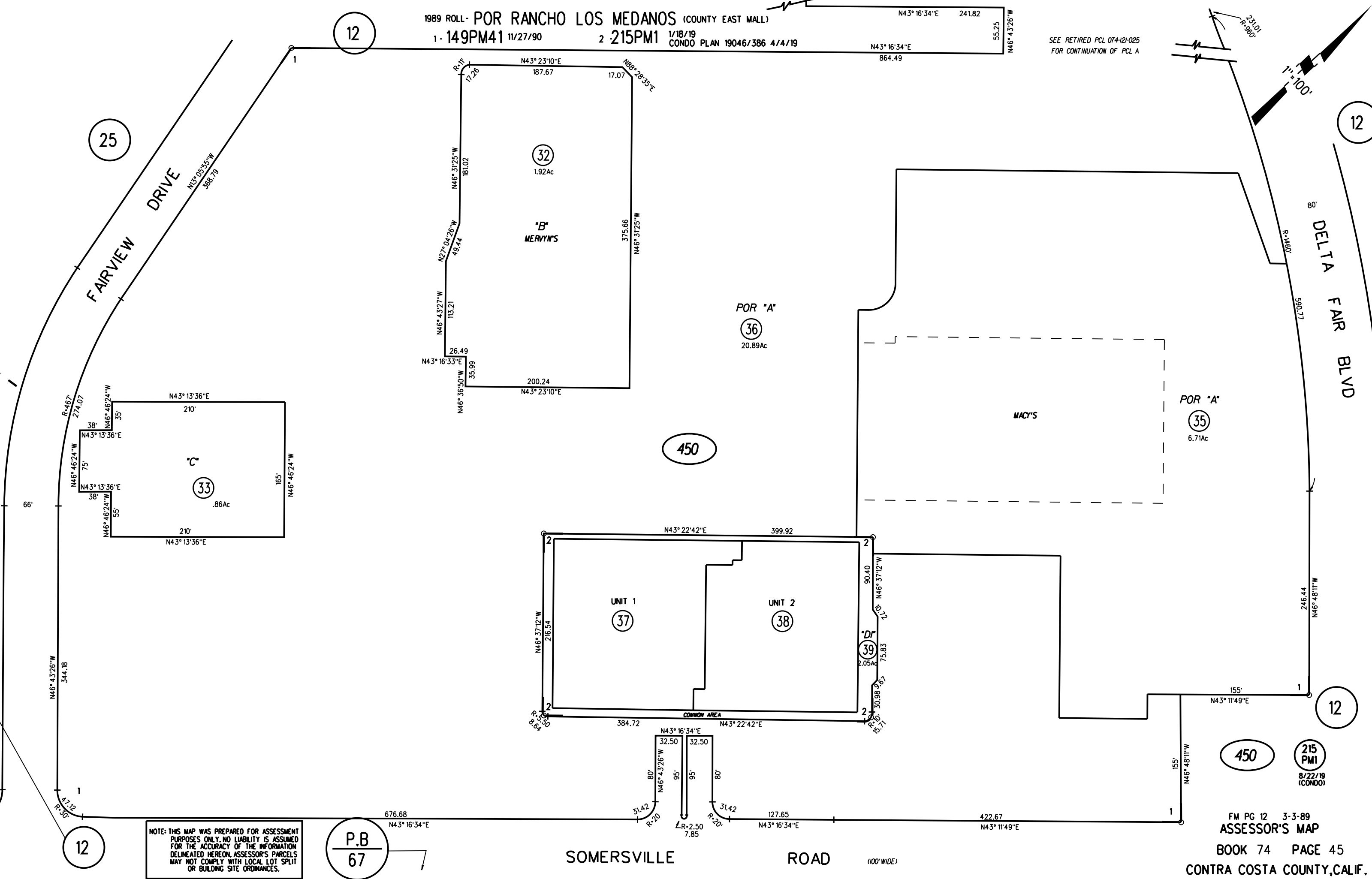
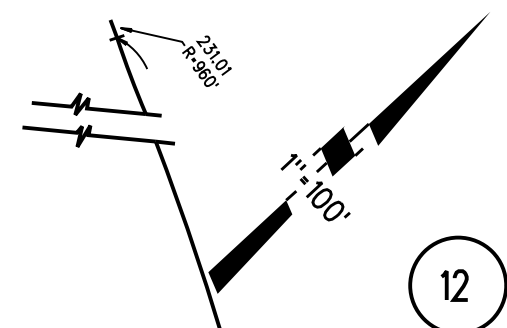


SEE RETIRED PCL 074-121-025  
 FOR CONTINUATION OF PCL A



NOTE: THIS MAP WAS PREPARED FOR ASSESSMENT PURPOSES ONLY. NO LIABILITY IS ASSUMED FOR THE ACCURACY OF THE INFORMATION DELINEATED HEREON. ASSESSOR'S PARCELS MAY NOT COMPLY WITH LOCAL LOT SPLIT OR BUILDING SITE ORDINANCES.

P.B.  
67

450 215 PM1 8/22/19 (CONDO)  
 FM PG 12 3-3-89  
**ASSESSOR'S MAP**  
 BOOK 74 PAGE 45  
 CONTRA COSTA COUNTY, CALIF.