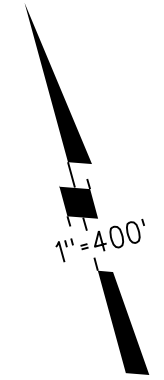


POR. RANCHO LOS MEDANOS

MB 74



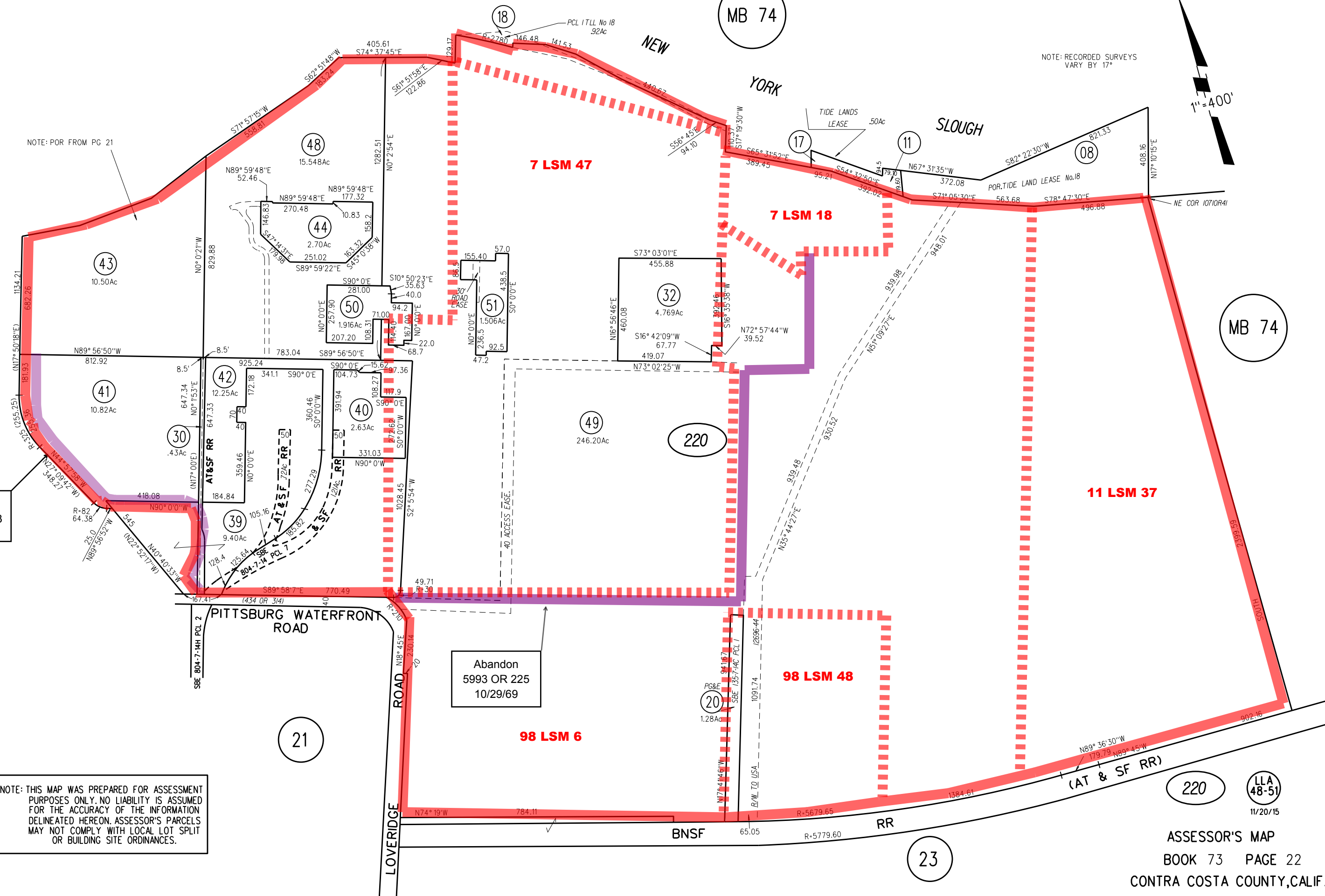
NOTE: RECORDED SURVEYS VARY BY 17"

NOTE: POR FROM PG 21

Abandon 8495 OR 273 9-7-77

Abandon 5993 OR 225 10/29/69

NOTE: THIS MAP WAS PREPARED FOR ASSESSMENT PURPOSES ONLY. NO LIABILITY IS ASSUMED FOR THE ACCURACY OF THE INFORMATION DELINEATED HEREON. ASSESSOR'S PARCELS MAY NOT COMPLY WITH LOCAL LOT SPLIT OR BUILDING SITE ORDINANCES.



MB 74

220 LLA 48-51 11/20/15

23