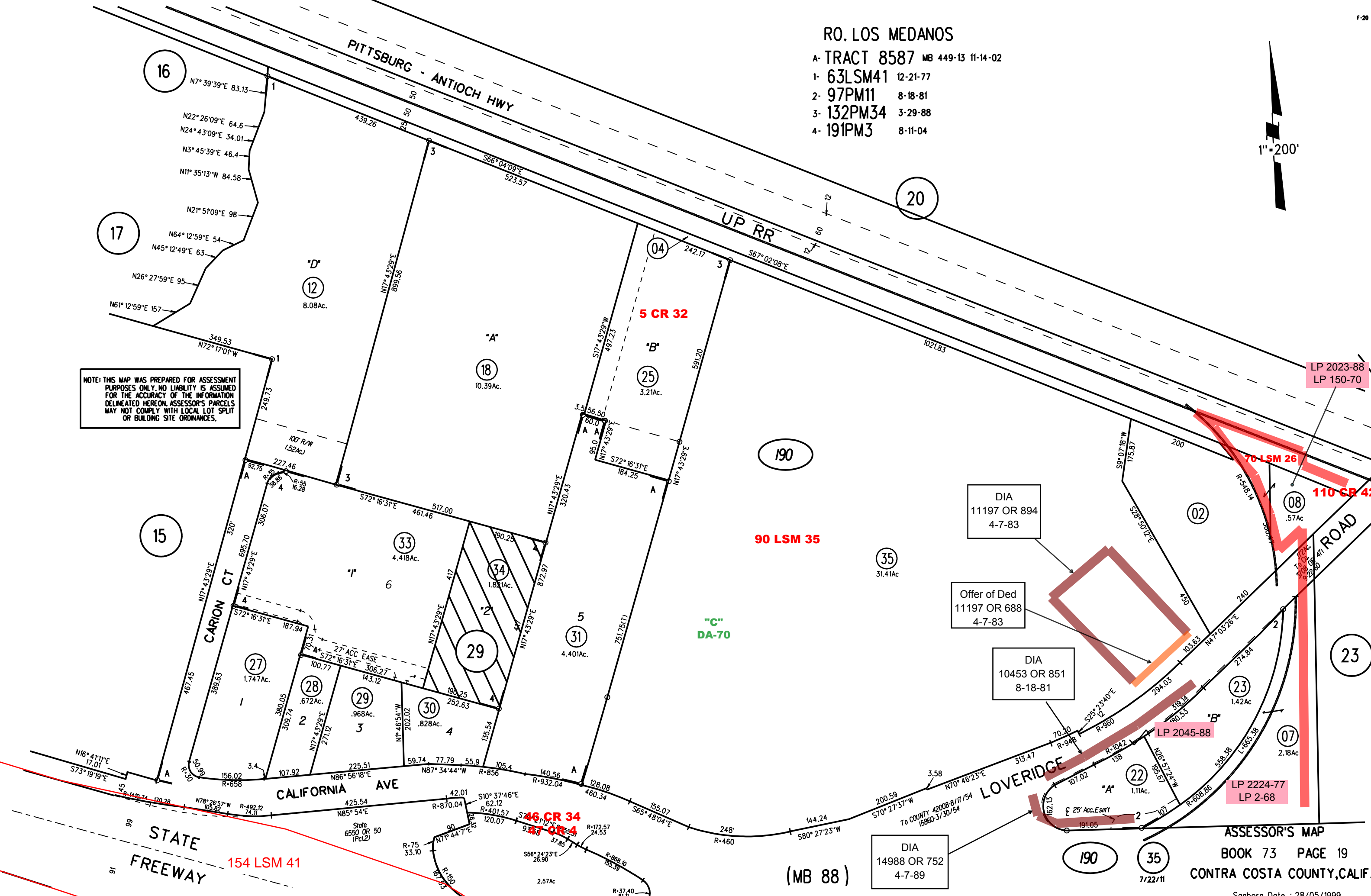


# RO. LOS MEDANOS

- A- TRACT 8587 MB 449-13 11-14-02
- 1- 63LSM41 12-21-77
- 2- 97PM11 8-18-81
- 3- 132PM34 3-29-88
- 4- 191PM3 8-11-04



NOTE: THIS MAP WAS PREPARED FOR ASSESSMENT PURPOSES ONLY. NO LIABILITY IS ASSUMED FOR THE ACCURACY OF THE INFORMATION DELINEATED HEREON. ASSESSOR'S PARCELS MAY NOT COMPLY WITH LOCAL LOT SPLIT OR BUILDING SITE ORDINANCES.



16

17

15

'D'

12

8.08Ac.

'A'

18

10.39Ac.

04

5 CR 32

'B'

25

3.21Ac.

190

90 LSM 35

'C'

DA-70

33

4.418Ac.

34

1.821Ac.

29

1.747Ac.

28

.672Ac.

29

.968Ac.

30

.828Ac.

31

4.401Ac.

35

31.41Ac.

23

02

.57Ac.

08

110 CR 42

70 LSM 26

LP 2023-88  
LP 150-70

DIA  
11197 OR 894  
4-7-83

Offer of Ded  
11197 OR 688  
4-7-83

DIA  
10453 OR 851  
8-18-81

LP 2045-88

LP 2224-77  
LP 2-68

DIA  
14988 OR 752  
4-7-89

154 LSM 41

46 CR 34

47 CR 34

(MB 88)

ASSESSOR'S MAP  
BOOK 73 PAGE 19  
CONTRA COSTA COUNTY, CALIF.