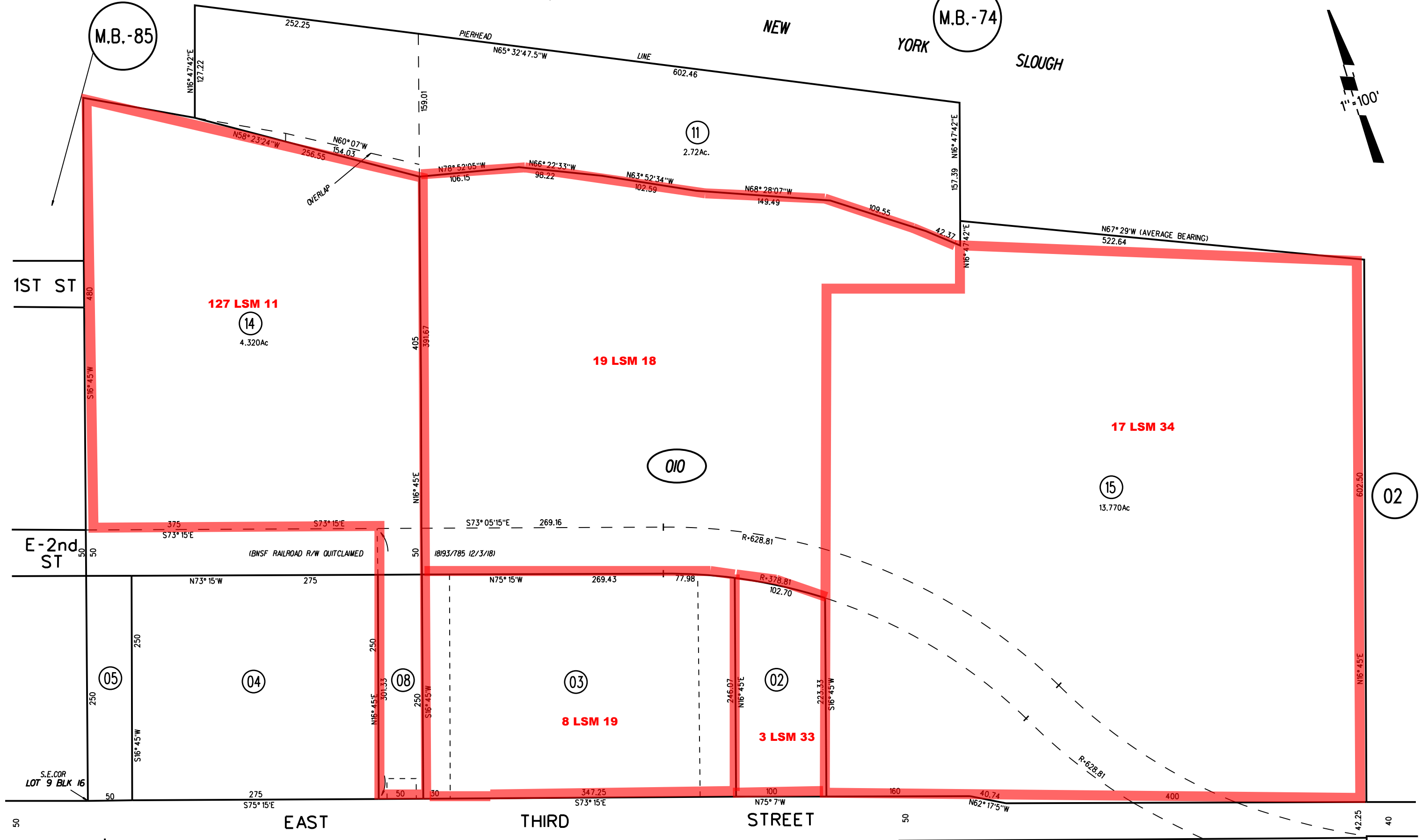
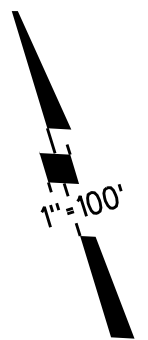


POR. RANCHO LOS MEDANOS

TIDELAND SURVEY 149 LSM 27

M.B. - 74

M.B. - 85



NOTE: THIS MAP WAS PREPARED FOR ASSESSMENT PURPOSES ONLY. NO LIABILITY IS ASSUMED FOR THE ACCURACY OF THE INFORMATION DELINEATED HEREON. ASSESSOR'S PARCELS MAY NOT COMPLY WITH LOCAL LOT SPLIT OR BUILDING SITE ORDINANCES.

05

04

010

14, 15  
1/30/19

02

010

15  
13.770Ac

11  
2.72Ac.

14  
4.320Ac

127 LSM 11

19 LSM 18

17 LSM 34

03

8 LSM 19

02

3 LSM 33

04

05

08

S.E. COR  
LOT 9 BLK 16

IBNSF RAILROAD R/W QUITCLAIMED

18193/185 12/3/18

R-378.81

R-628.81

R-628.81

N62°17'5"W

N75°7'W

S73°15'E

N73°15'W

N75°15'W

N16°47'42"E

N65°32'47.5"W

LINE

YORK

SLOUGH

NEW

PIERHEAD

252.25

602.46

127.22

159.01

N58°23'24"W

N60°07'W

N78°52'05"W

N66°22'33"W

N63°52'34"W

N68°28'07"W

N16°47'42"E

N67°29'W (AVERAGE BEARING)

480

256.55

106.15

98.22

102.59

149.49

109.55

42.37

522.64

1ST ST

127 LSM 11

14

4.320Ac

19 LSM 18

17 LSM 34

010

15

13.770Ac

E-2nd ST

S73°15'E

S73°05'15"E

269.16

R-628.81

50

375

S73°15'E

50

269.16

S73°05'15"E

269.16

R-628.81

50

N73°15'W

275

N75°15'W

269.43

77.98

R-378.81

50

250

N73°15'W

275

N75°15'W

269.43

77.98

R-378.81

250

S16°45'W

250

N16°45'E

301.33

S16°45'W

250

03

N16°45'E

246.07

N16°45'E

102.70

R-628.81

250

S16°45'W

250

N16°45'E

301.33

S16°45'W

250

03

N16°45'E

246.07

N16°45'E

102.70

R-628.81

250

S16°45'W

250

N16°45'E

301.33

S16°45'W

250

03

N16°45'E

246.07

N16°45'E

102.70

R-628.81

250

S16°45'W

250

N16°45'E

301.33

S16°45'W

250

03

N16°45'E

246.07

N16°45'E

102.70

R-628.81

50

S16°45'W

275

S75°15'E

50

30

S73°15'E

347.25

N75°7'W

100

160

40.74

N62°17'5"W

400

42.25

50

EAST ST

EAST

THIRD

STREET

50

HARBOR ST

40