

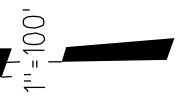
POR. NE QR. SEC. 25 T2N R1E M.D.B. & M.

TAX CODE AREA

A- FITZPATRICK SUB. M.B. 21-570

1- 85 P.M. 29 3-28-80

WIGHTMAN CT.



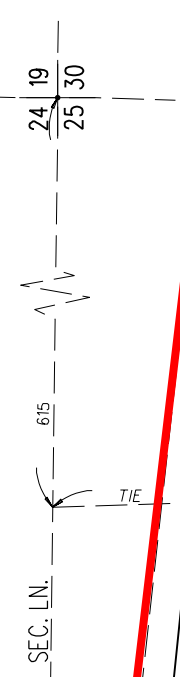
LINDBERG ST.

DRAKE ST.

D(WILLS AVE.) ST.

HIGHWAY

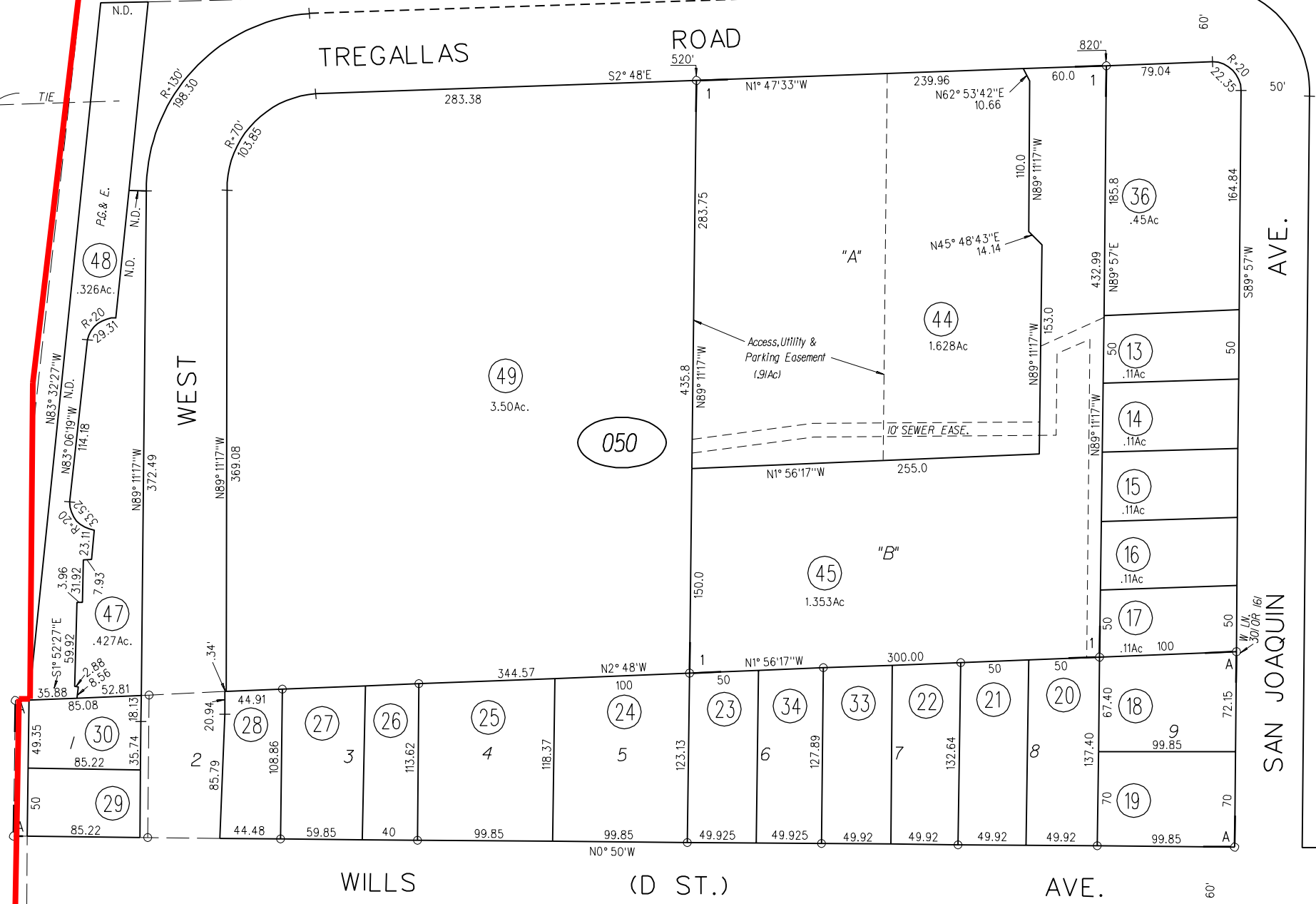
STATE



P.B. 67

141 LSM 45 Control Diagram

136 LSM 3 Control Diagram



050

10

4