

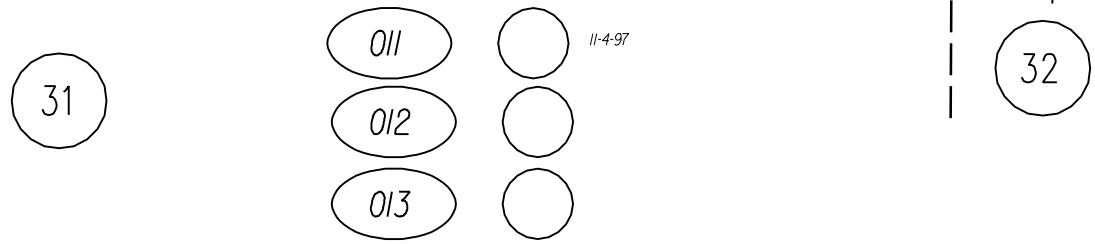
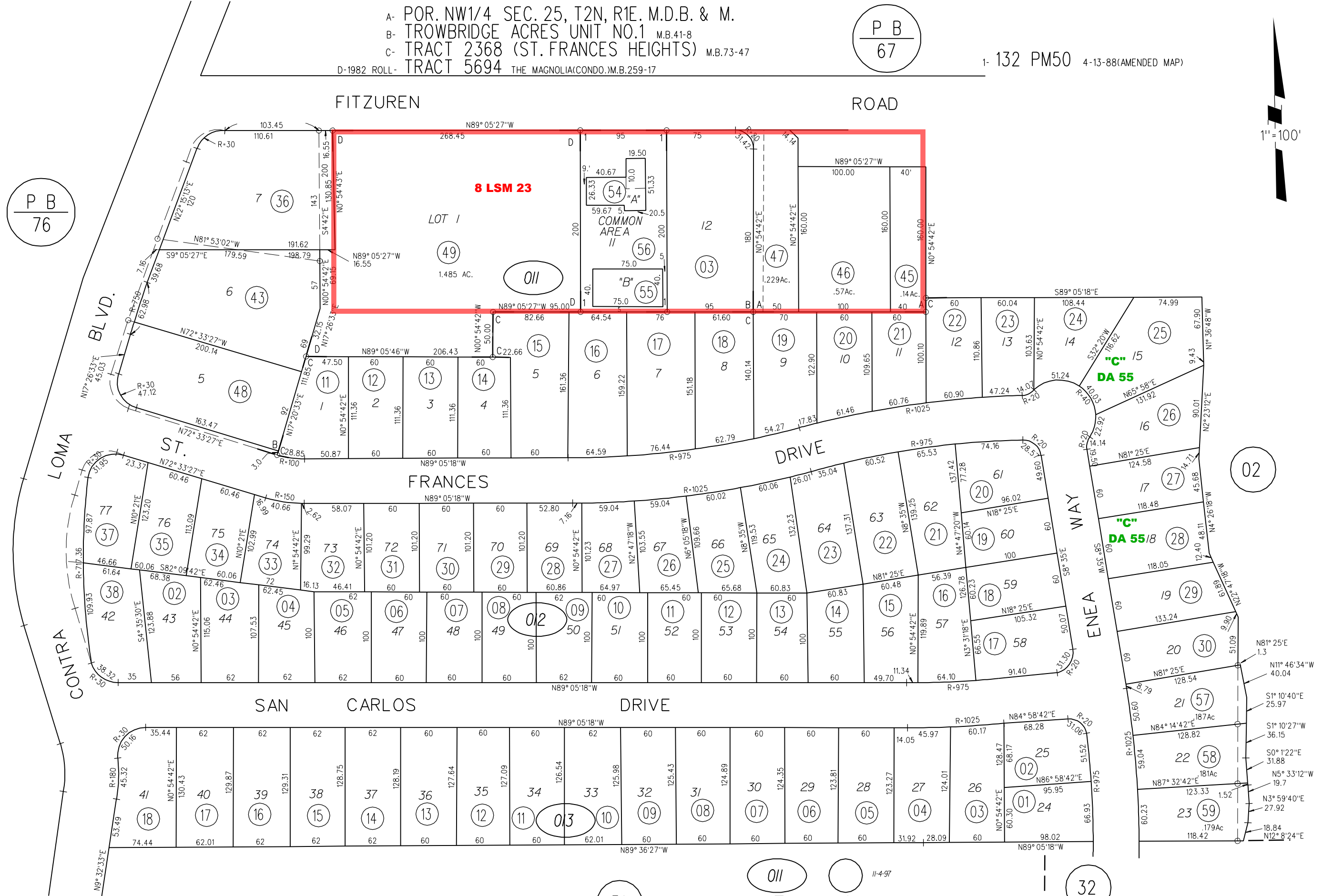
A- POR. NW1/4 SEC. 25, T2N, R1E. M.D.B. & M.
 B- TROWBRIDGE ACRES UNIT NO.1 M.B.41-8
 C- TRACT 2368 (ST. FRANCES HEIGHTS) M.B.73-47
 D-1982 ROLL- TRACT 5694 THE MAGNOLIA(CONDO.)M.B.259-17

P B
67

1- 132 PM50 4-13-88(AMENDED MAP)

1"=100'

P B
76



FM. 71/01-02 7-29-59 G.C.C.
 ASSESSOR'S MAP
 BOOK 71 PAGE 01
 CONTRA COSTA COUNTY, CALIF.