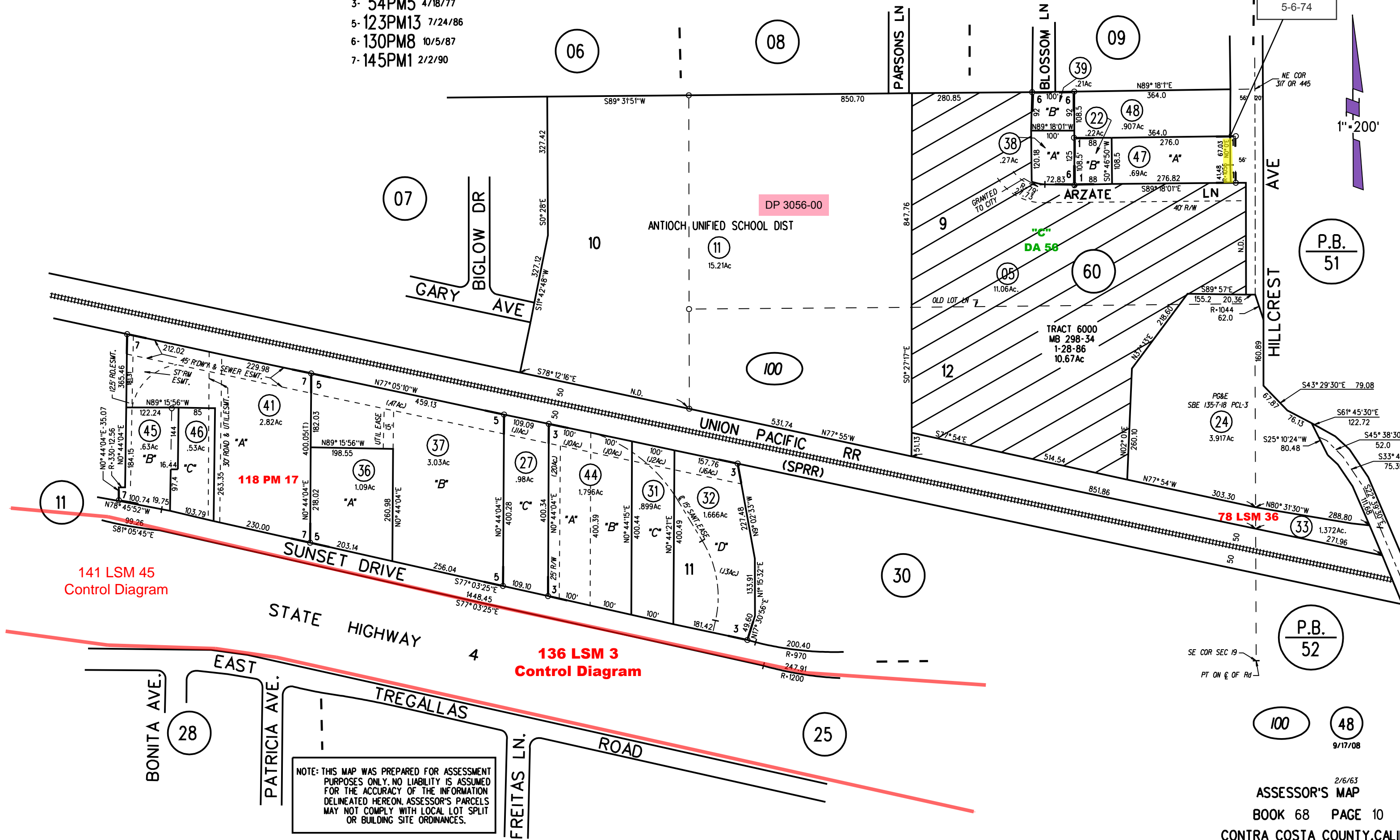
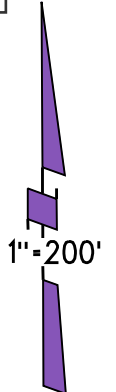


- 1- 32PM45 3/19/74
- 2- 43PM32 3/5/76
- 3- 54PM5 4/18/77
- 5- 123PM13 7/24/86
- 6- 130PM8 10/5/87
- 7- 145PM1 2/2/90

POR SE 1/4 SEC 19 T2N R2E MDBM
 LTS 9,12 & POR 10 ABBOTT & BEEDE TR MB E-101-1/2 1/8/1898

Grant Deed
 7220 OR 627
 5-6-74



NOTE: THIS MAP WAS PREPARED FOR ASSESSMENT PURPOSES ONLY. NO LIABILITY IS ASSUMED FOR THE ACCURACY OF THE INFORMATION DELINEATED HEREON. ASSESSOR'S PARCELS MAY NOT COMPLY WITH LOCAL LOT SPLIT OR BUILDING SITE ORDINANCES.