

A- POR. LOT 11, WILLS ADDITION TO TOWN OF ANTIOCK M.B. B-29

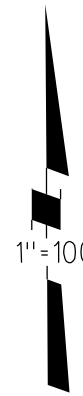
TAX CODE AREA

B- BASSETT SUBD'N. LOTS 6&10, WILLS ADDT'N TOWN OF ANTIOCH M.B. 22-658

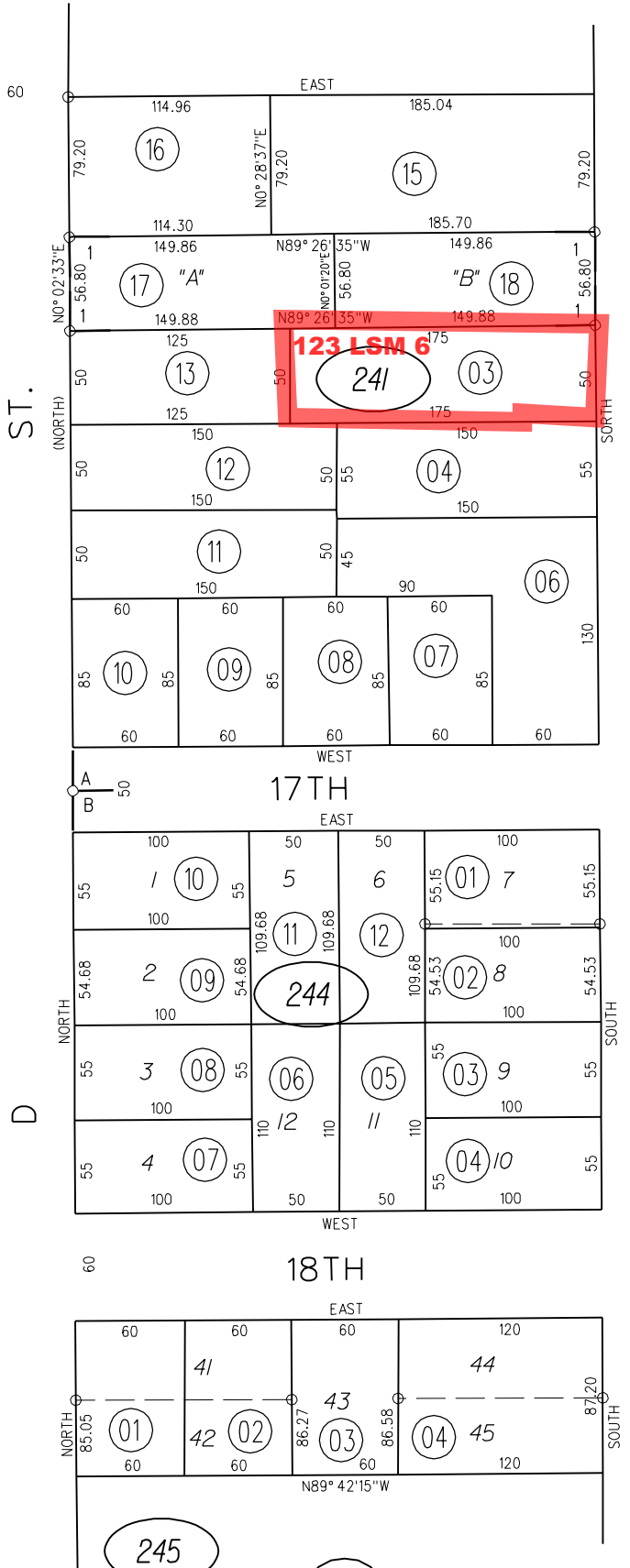
C- ROSA ADDITION (RESUBD'N LOT 5, WILLS ADDT'N. TOWN OF ANTIOCH) M.B. 23-709

1- 79P.M.23&24 7-27-79

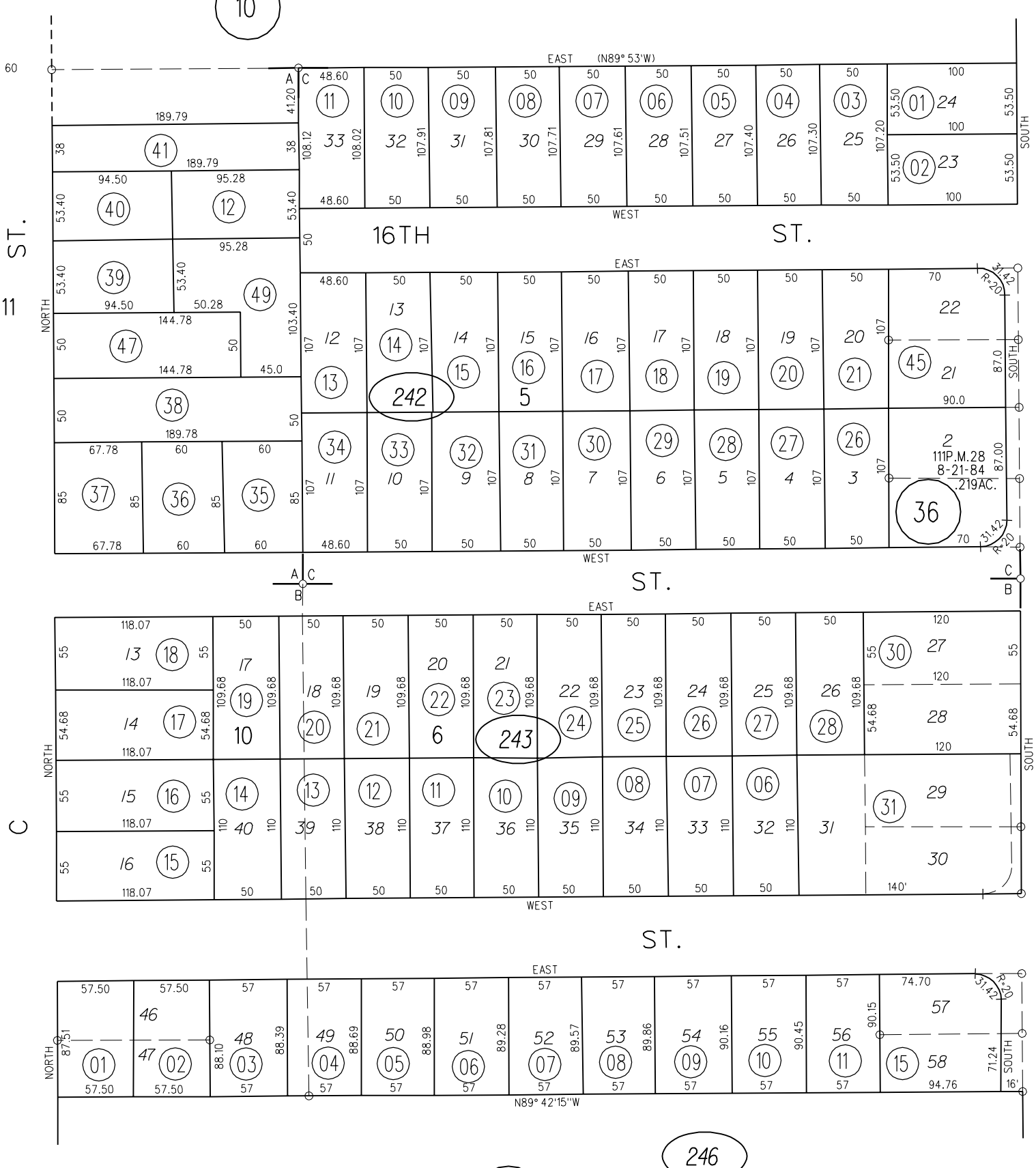
1" = 100'



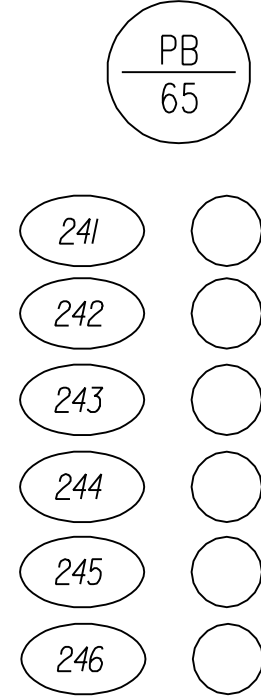
11



10



21



P.B.
68

7-21-88

ASSESSOR'S MAP
BOOK 67 PAGE 24

12-12-61 G.C.C. CONTRA COSTA COUNTY, CALIF.

19 TH. ST.

245

26

25

246