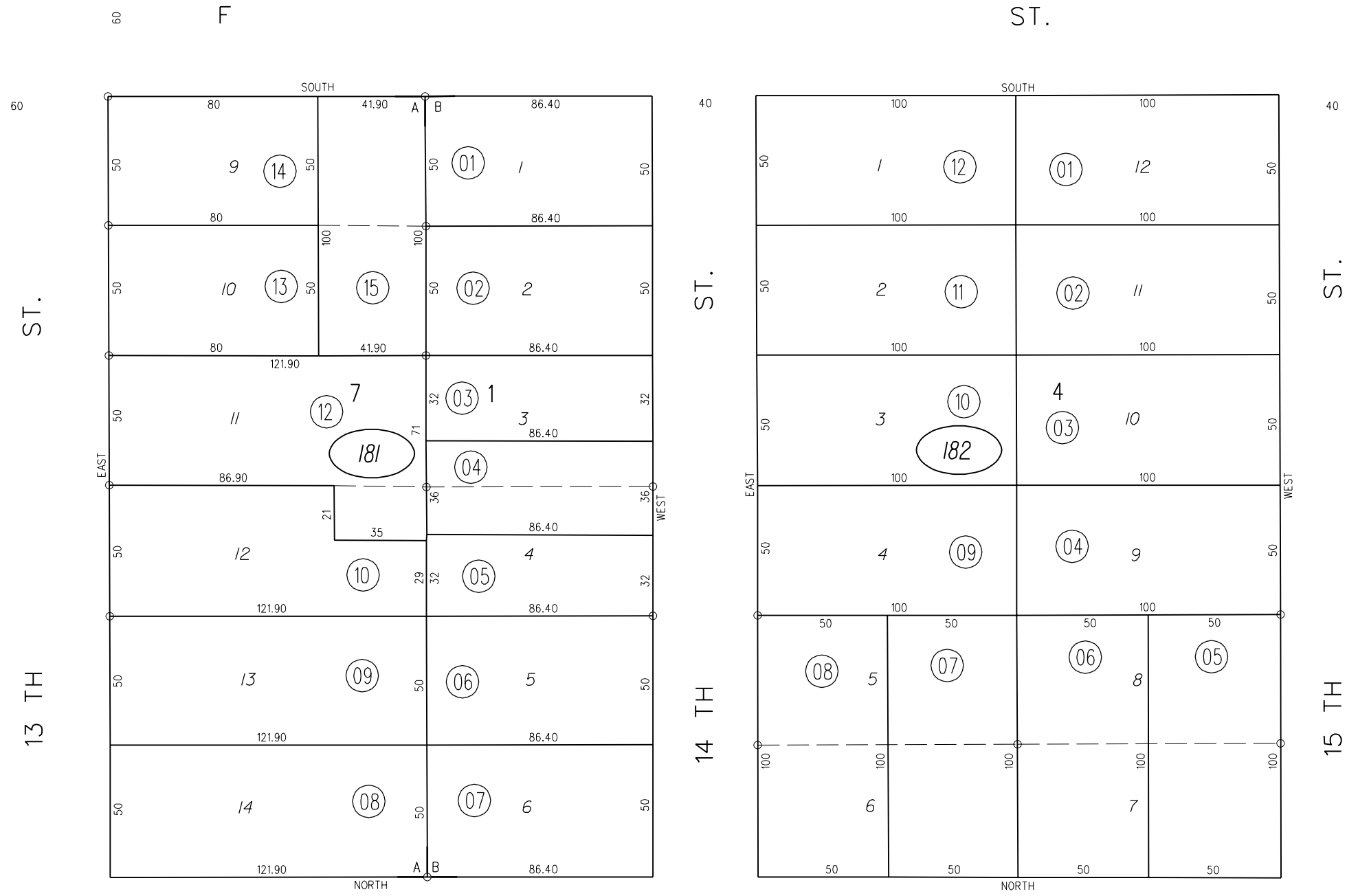


A- POR. BLOCK 7 SOUTH PARK ADDT'N. TO TOWN OF ANTIOCH M.B. B-29
 B- BLOCKS 1 & 4 GREENE SUBDIVISION
 (POR. LOTS 16, 17, 18 WILLS ADDT'N. TO TOWN OF ANTIOCH) M.B. 18-413

TAX CODE AREA



11



13

19

181

182

17