

B- TRACT 2528 (CENTRAL ESTATES NO.1) M.B.67-39

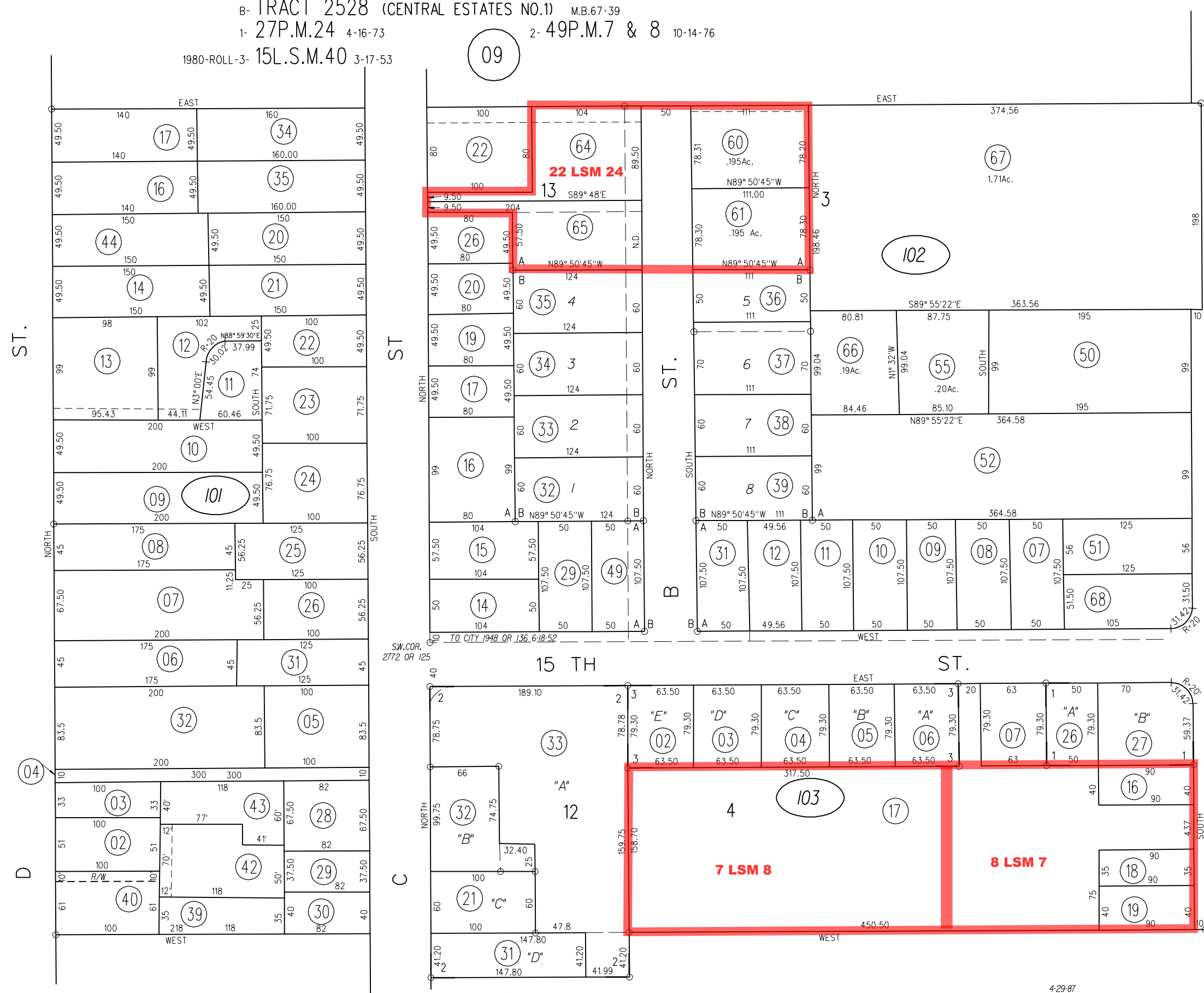
1- 27P.M.24 4-16-73

2- 49P.M.7 & 8 10-14-76

1980-ROLL-3- 15L.S.M.40 3-17-53

11

13TH



22 LSM 24

7 LSM 8

8 LSM 7

E 13TH

15 TH

ST.

E 15TH ST.

80'

1"=100'

PB 65

24

101

102

103

ASSESSOR'S MAP

BOOK 67 PAGE 10

12-5-61 G.C.C. CONTRA COSTA COUNTY, CALIF.

4-29-87