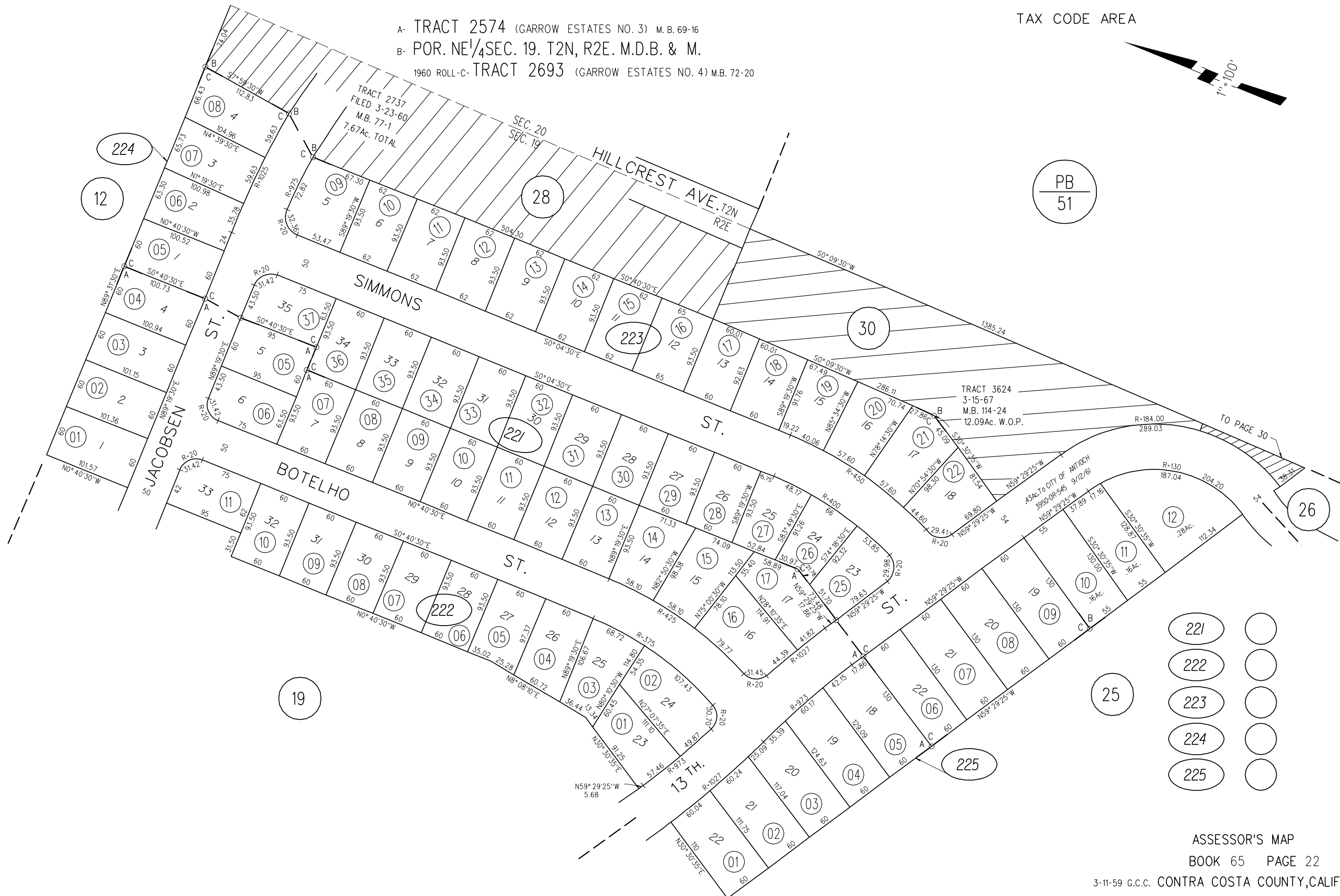


A- TRACT 2574 (GARROW ESTATES NO. 3) M.B. 69-16
B- POR. NE 1/4 SEC. 19. T2N, R2E. M.D.B. & M.
1960 ROLL-C-TRACT 2693 (GARROW ESTATES NO. 4) M.B. 72-20



PB
51

- 221
- 222
- 223
- 224
- 225