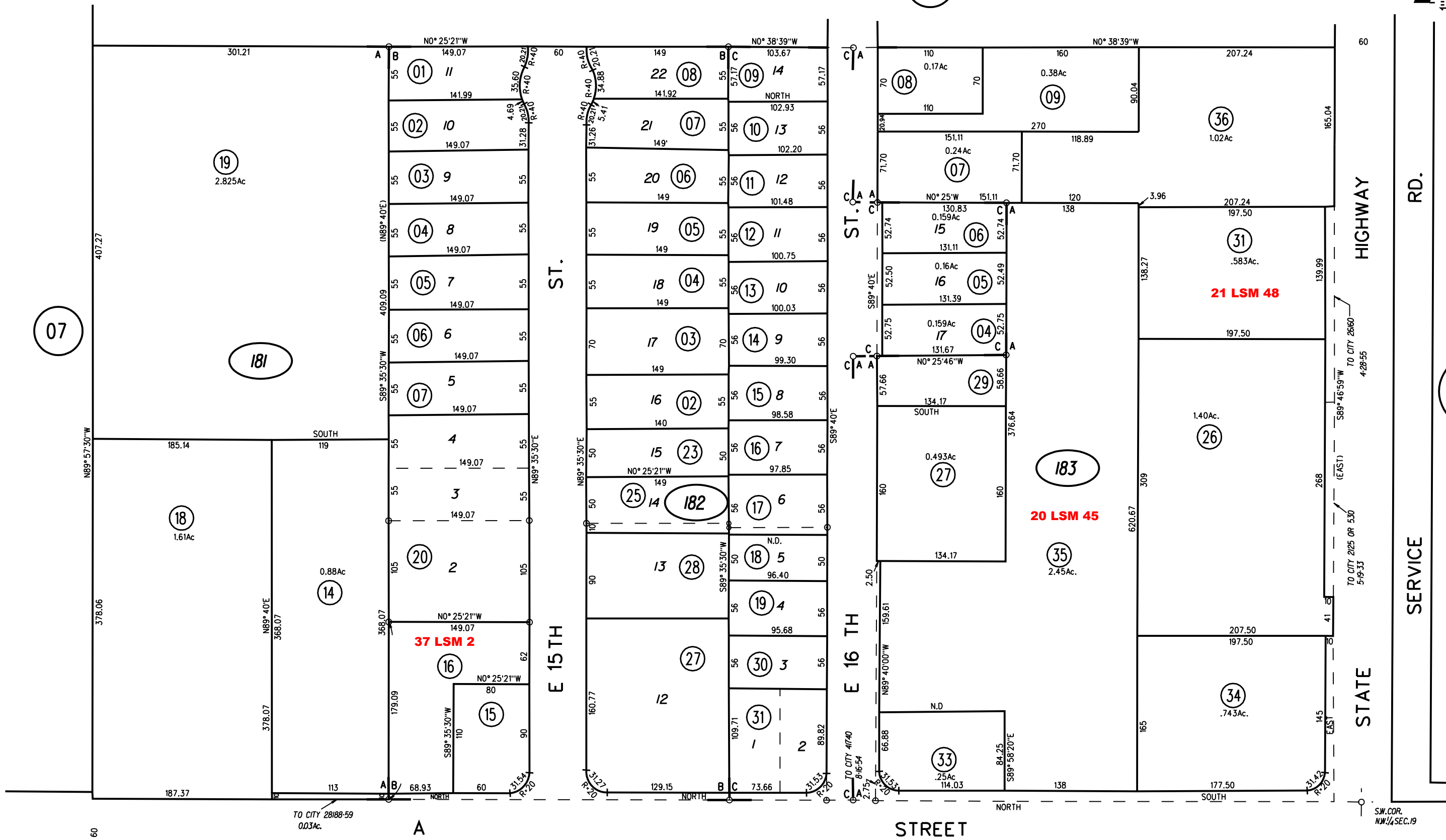
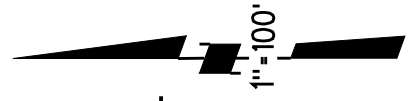


A- POR. NW1/4 SEC.19, T2N, R2E, M.D.B.&M.

C- VISTA DE DIABLO M.B.23-732

B- STAMM SUBDIVISION M.B. 43-27



NOTE: THIS MAP WAS PREPARED FOR ASSESSMENT PURPOSES ONLY. NO LIABILITY IS ASSUMED FOR THE ACCURACY OF THE INFORMATION DELINEATED HEREON. ASSESSOR'S PARCELS MAY NOT COMPLY WITH LOCAL LOT SPLIT OR BUILDING SITE ORDINANCES.

15 TH. ST.

PB 67

181

16 TH ST.

182

183

17 TH ST.

36

ASSESSOR'S MAP BOOK 65 PAGE 18 CONTRA COSTA COUNTY, CALIF.

Sanborn Date : 28/05/1999