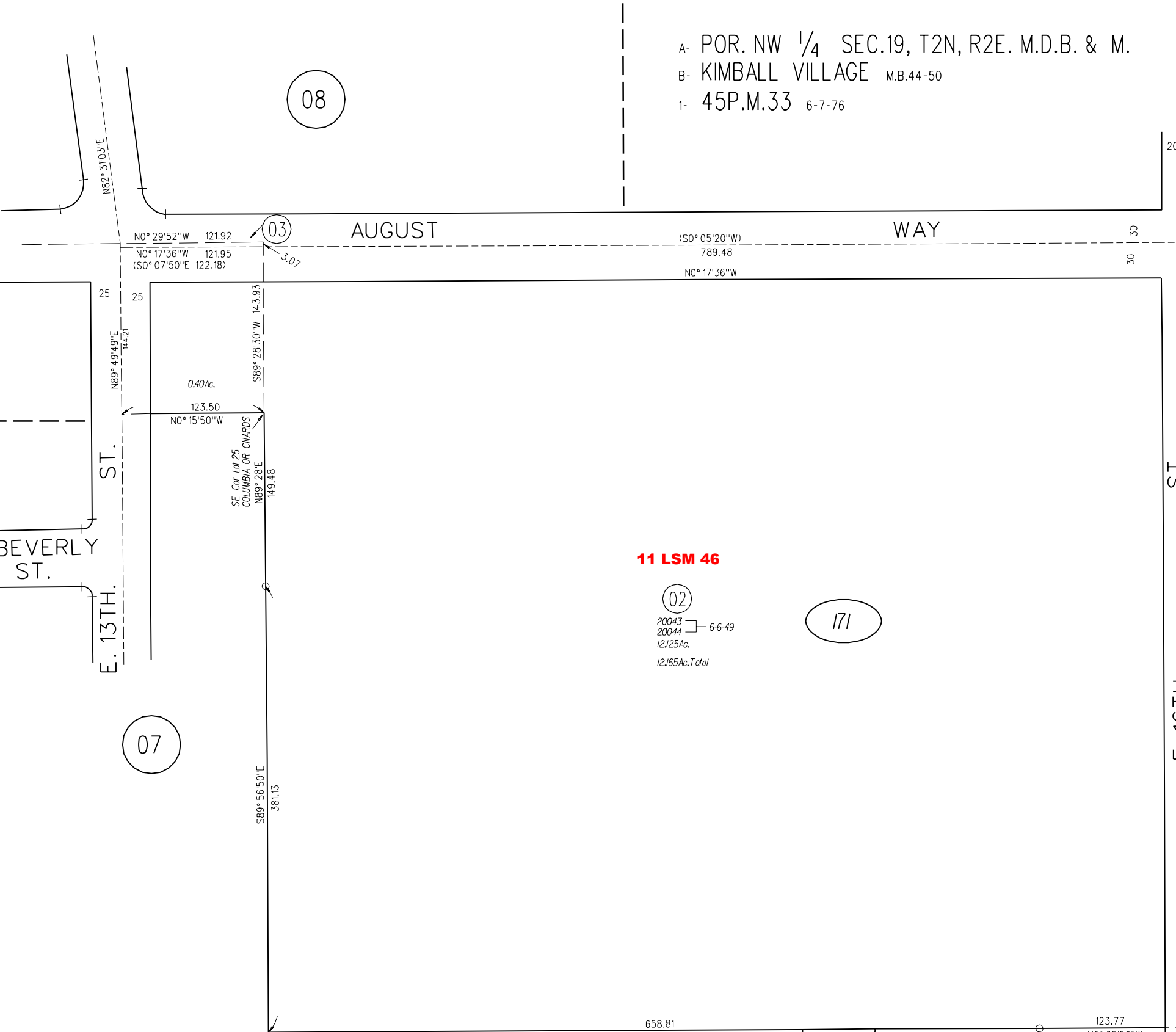


A- POR. NW 1/4 SEC.19, T2N, R2E. M.D.B. & M.
B- KIMBALL VILLAGE M.B.44-50
1- 45P.M.33 6-7-76

08

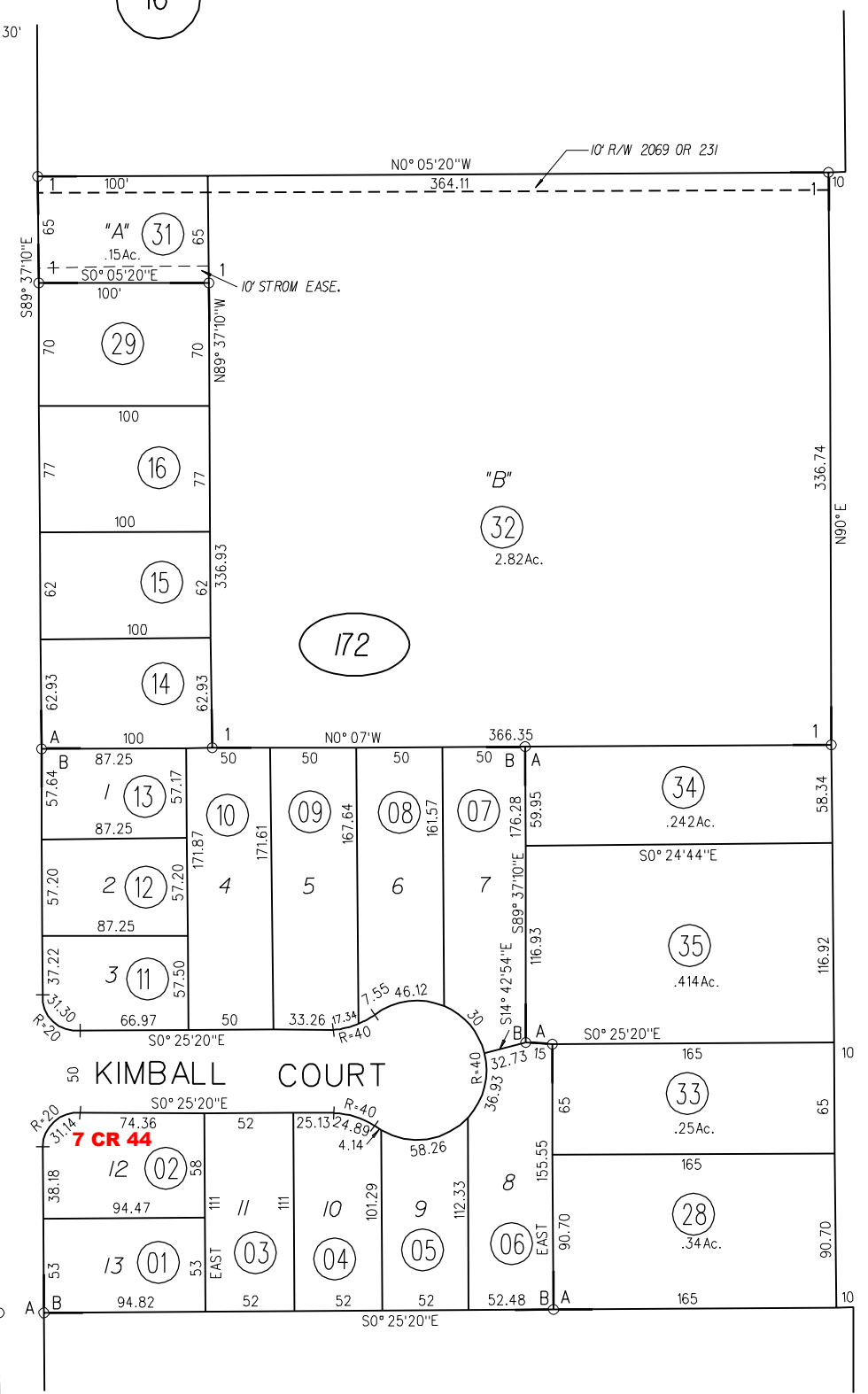
16



11 LSM 46

02
20043
20044 6-6-49
12.25Ac.
12.65Ac. Total

171

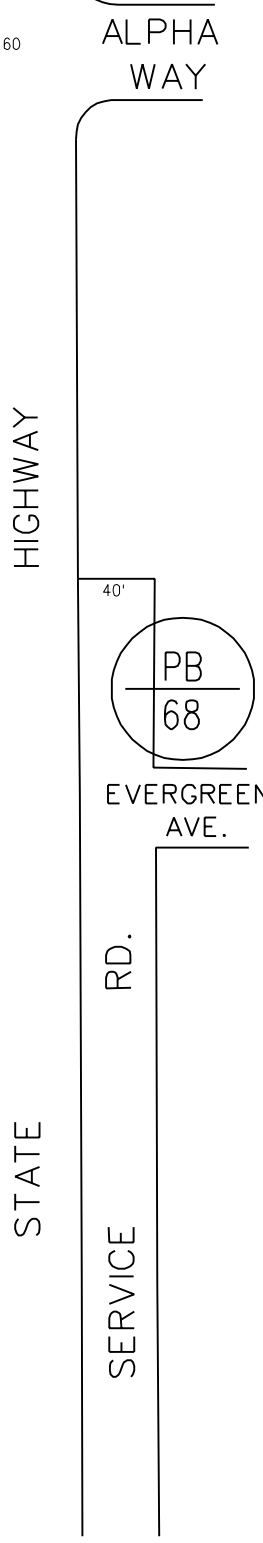


KIMBALL COURT

7 CR 44

171

172



PB
68