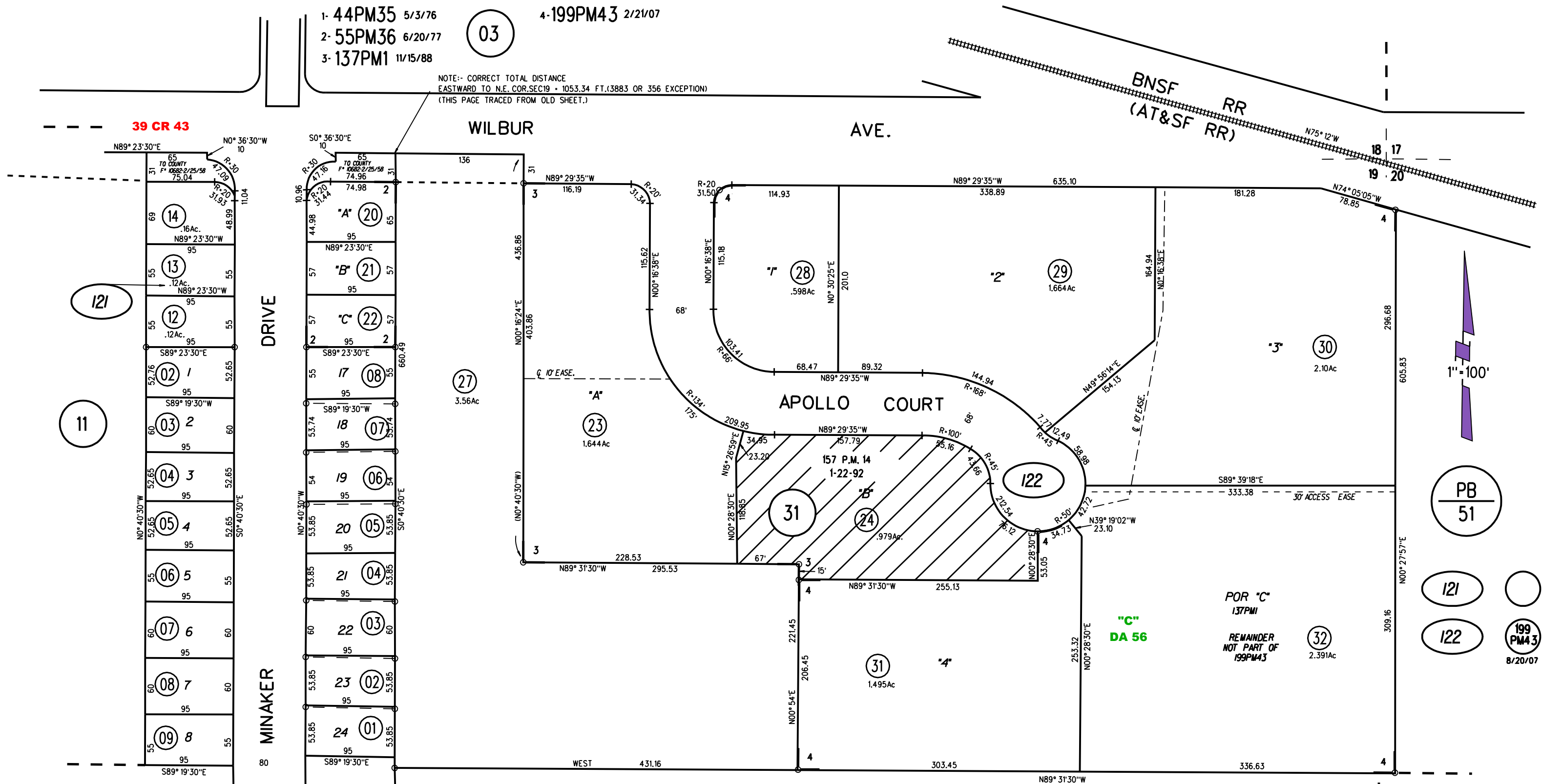


POR TRACT 2234 MB 60-25 (GARROW ESTATES NO 1)
 POR N 1/2 NE 1/4 SEC 19 T2N R2E MDB&M

- 1- 44PM35 5/3/76
- 2- 55PM36 6/20/77
- 3- 137PM1 11/15/88

03

NOTE:- CORRECT TOTAL DISTANCE
 EASTWARD TO N.E. COR. SEC 19 - 1053.34 FT. (388.3 OR 356 EXCEPTION)
 (THIS PAGE TRACED FROM OLD SHEET.)



NOTE: THIS MAP WAS PREPARED FOR ASSESSMENT PURPOSES ONLY. NO LIABILITY IS ASSUMED FOR THE ACCURACY OF THE INFORMATION DELINEATED HEREON. ASSESSOR'S PARCELS MAY NOT COMPLY WITH LOCAL LOT SPLIT OR BUILDING SITE ORDINANCES.

POR "C"
 137PM1
 REMAINDER
 NOT PART OF
 199PM43