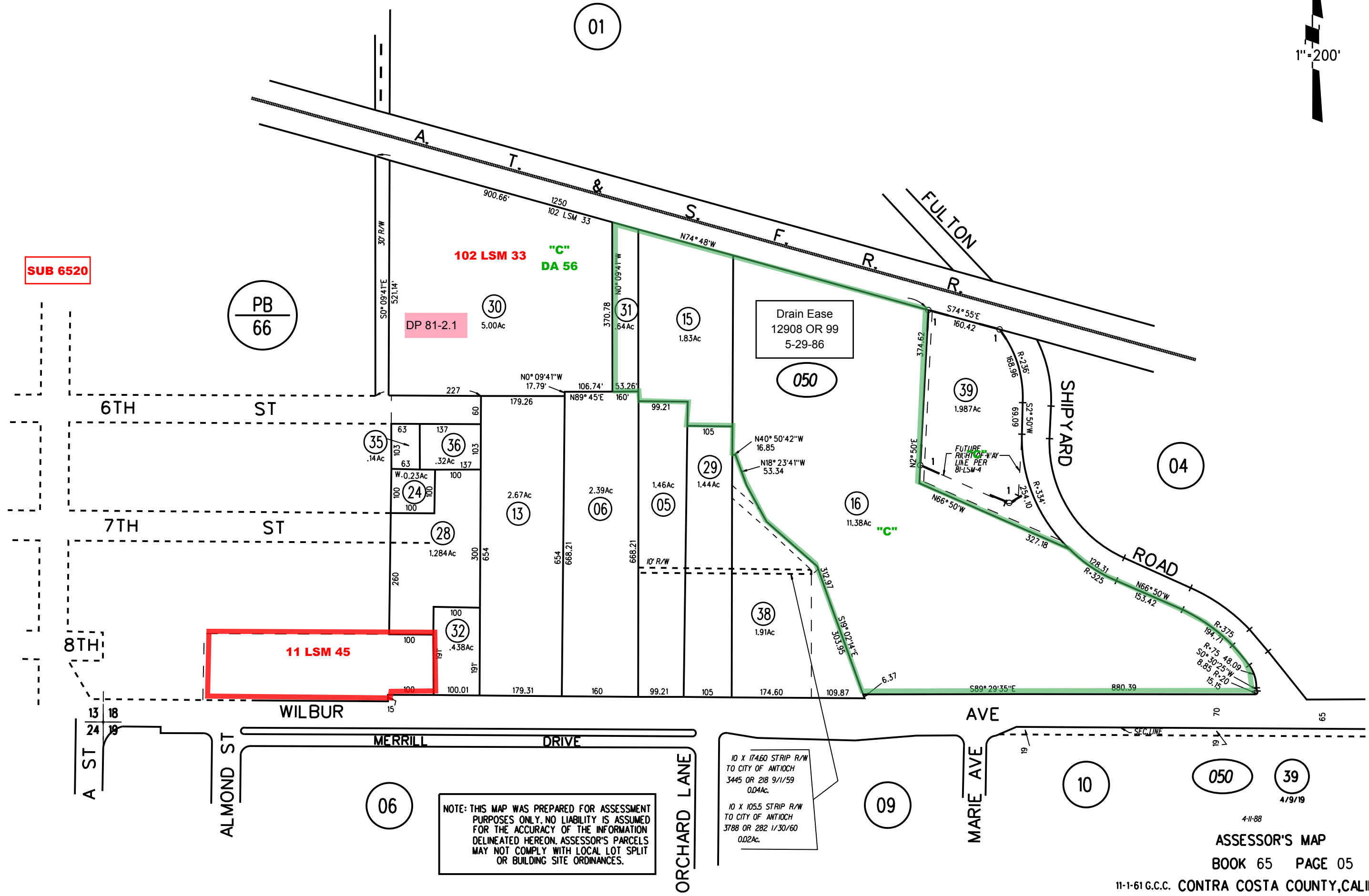


POR. SW 1/4 SEC. 18 T2N R2E M.D.B. & M.

1- 81 L.S.M.7 10-27-86

1"=200'



SUB 6520

PB  
66

DP 81-2.1  
5.00Ac

102 LSM 33 "C"  
DA 56

Drain Ease  
12908 OR 99  
5-29-86

SHIPYARD  
ROAD

11 LSM 45

NOTE: THIS MAP WAS PREPARED FOR ASSESSMENT PURPOSES ONLY. NO LIABILITY IS ASSUMED FOR THE ACCURACY OF THE INFORMATION DELINEATED HEREON. ASSESSOR'S PARCELS MAY NOT COMPLY WITH LOCAL LOT SPLIT OR BUILDING SITE ORDINANCES.

10 X 174.60 STRIP R/W TO CITY OF ANTIOCH 3445 OR 218 9/11/59 0.04Ac.  
10 X 105.5 STRIP R/W TO CITY OF ANTIOCH 3788 OR 282 1/30/60 0.02Ac.

4-11-88

ASSESSOR'S MAP

BOOK 65 PAGE 05

11-1-61 G.C.C. CONTRA COSTA COUNTY, CALIF.