

S 1/2 SEC 9 T1N R2E MDBM

1-POR 116PM1-3 5-14-85

A- 2021 - POR TRACT 9249 MB 542-34 (AVIANO-PHASE I) 04-28-20

DA 104 PCL. 1743 B  
30' FCD ACCESS & UTIL. EASE.  
19046 OR 549  
10-14-93  
EB-10145

DA 104 UPPER SAND CRK. BASIN  
PCL. 1782 CCCFC & WCD  
96-058288  
4-01-96  
ED-10194

PCL. 1778 CCCFC & WCD  
95-087820  
6-02-95  
ED-10192

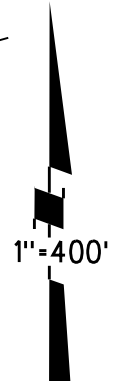
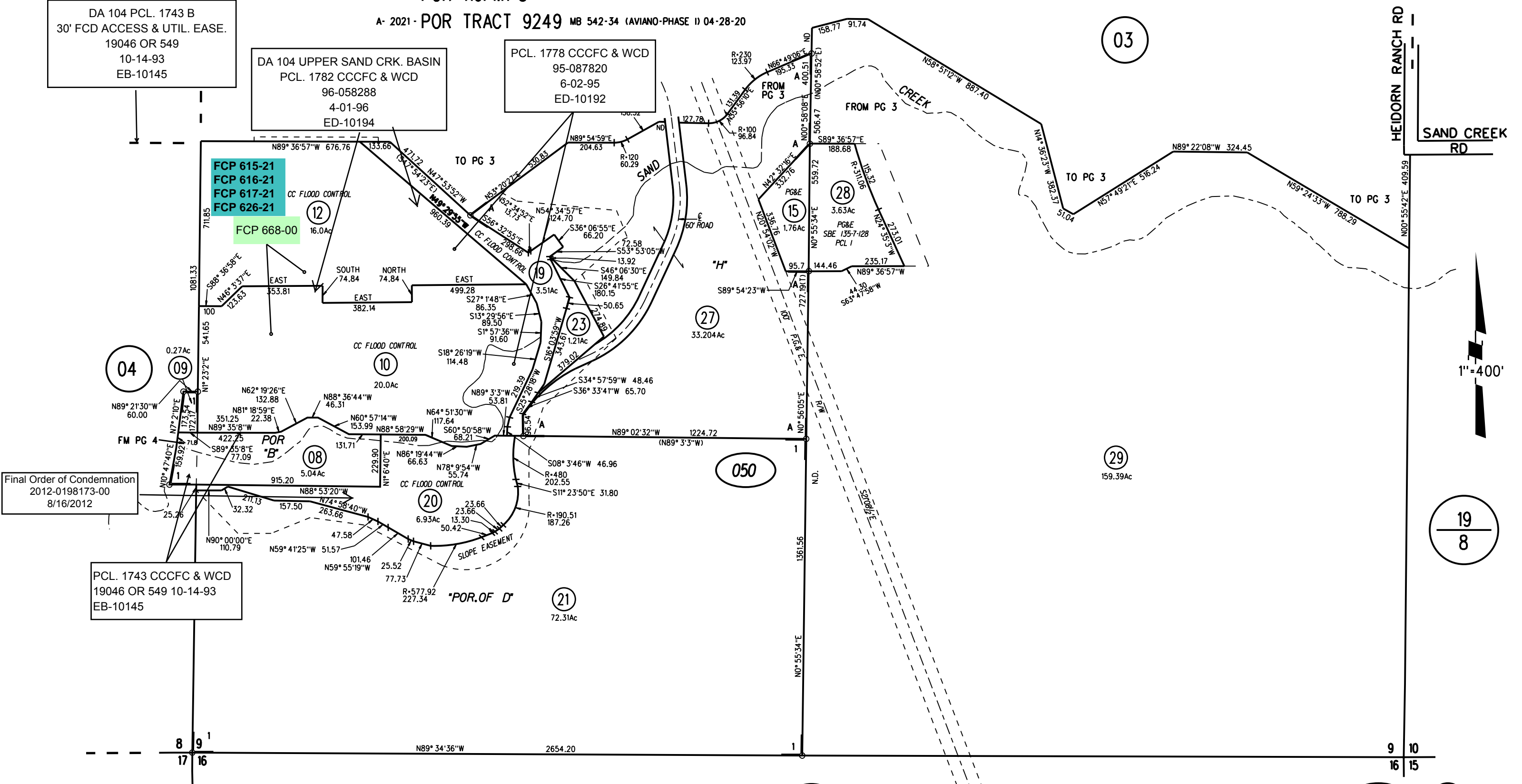
FCP 615-21  
FCP 616-21  
FCP 617-21  
FCP 626-21

FCP 668-00

Final Order of Condemnation  
2012-0198173-00  
8/16/2012

PCL. 1743 CCCFC & WCD  
19046 OR 549 10-14-93  
EB-10145

NOTE: THIS MAP WAS PREPARED FOR ASSESSMENT  
PURPOSES ONLY. NO LIABILITY IS ASSUMED  
FOR THE ACCURACY OF THE INFORMATION  
DELINEATED HEREON. ASSESSOR'S PARCELS  
MAY NOT COMPLY WITH LOCAL LOT SPLIT  
OR BUILDING SITE ORDINANCES.



NOTE: FOR MINERAL RIGHTS ON  
THIS PAGE SEE BK 19 PGS 22 & 23