

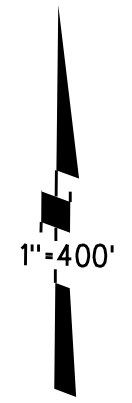
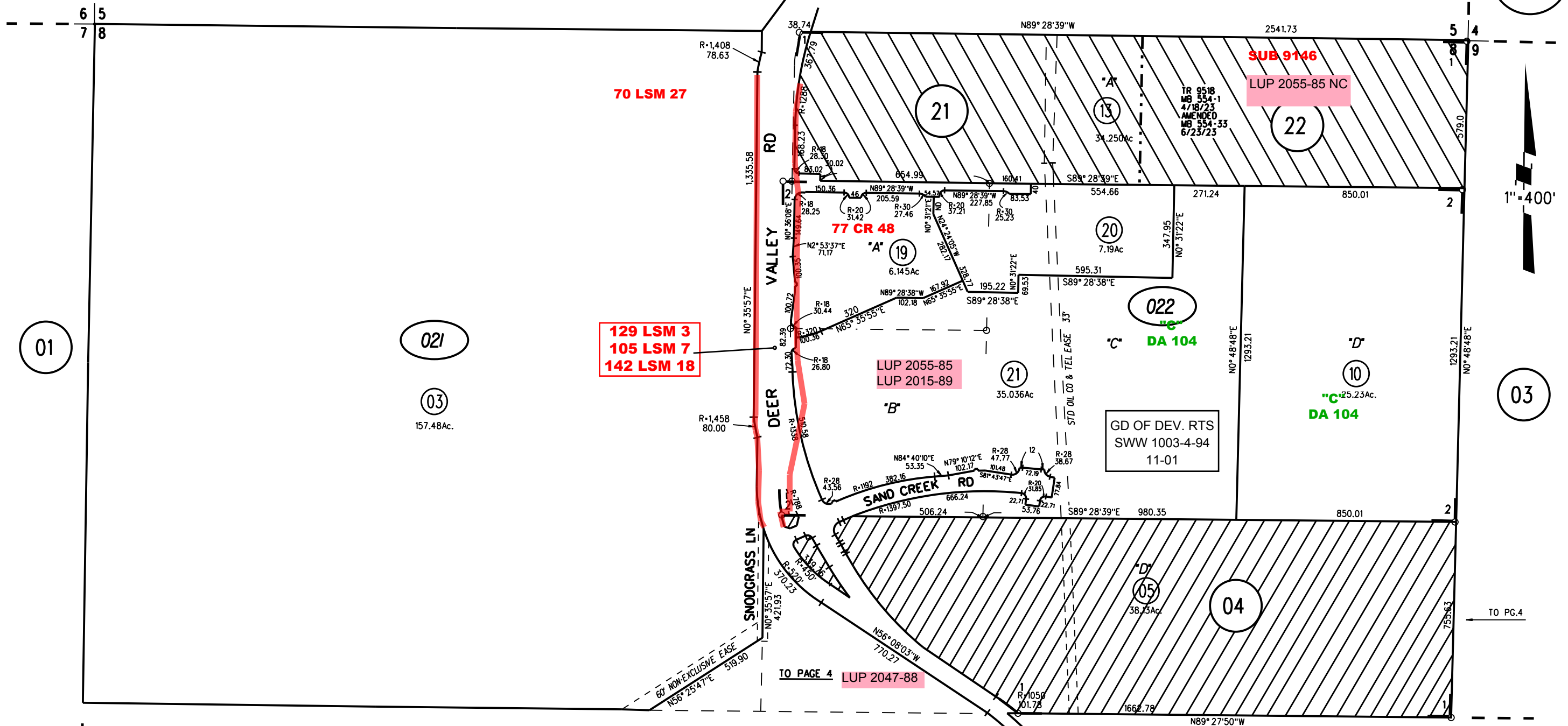
N 1/2 SEC 8 T1N R2E MDBM

1- 139PM30 5/2/1989

2- 180PM17 1/30/2001

PB
55

PB
56



01

021

03
157.48Ac.

129 LSM 3
105 LSM 7
142 LSM 18

LUP 2055-85
LUP 2015-89

GD OF DEV. RTS
SWW 1003-4-94
11-01

SUB 9146
LUP 2055-85 NC

DA 104
25.23Ac.

TO PAGE 4
LUP 2047-88

NOTE: FOR MINERAL RIGHTS ON
THIS PAGE SEE BK19 PG22

NOTE: THIS MAP WAS PREPARED FOR ASSESSMENT PURPOSES ONLY. NO LIABILITY IS ASSUMED FOR THE ACCURACY OF THE INFORMATION DELINEATED HEREON. ASSESSOR'S PARCELS MAY NOT COMPLY WITH LOCAL LOT SPLIT OR BUILDING SITE ORDINANCES.

05
021
022
TR 9518
8/18/23