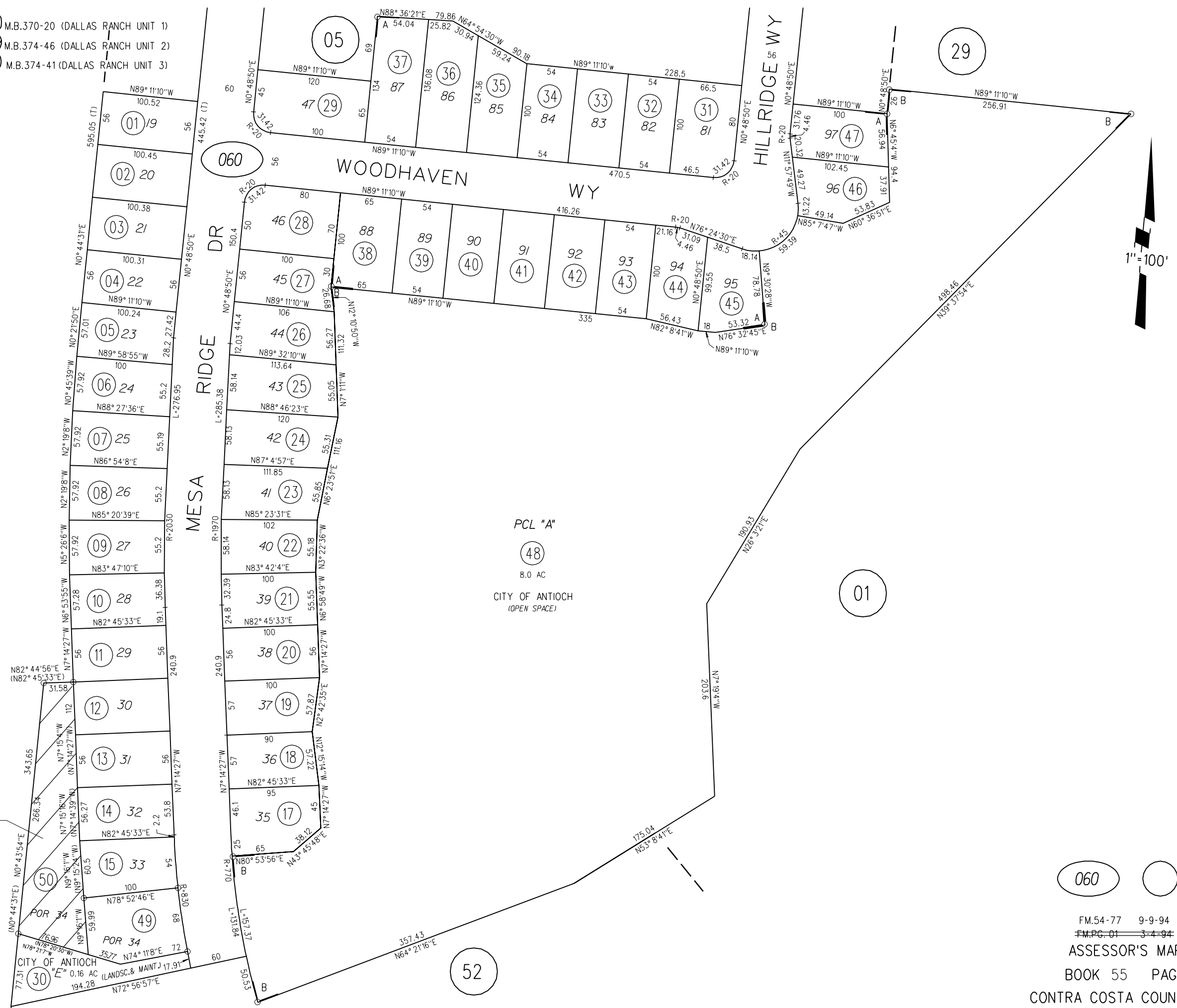


1994 ROLL-POR. TRACT 7380 M.B.370-20 (DALLAS RANCH UNIT 1)
A-1995 ROLL-POR. TRACT 7859 M.B.374-46 (DALLAS RANCH UNIT 2)
B-1995 ROLL-POR. TRACT 7860 M.B.374-41 (DALLAS RANCH UNIT 3)

BK
75

NOTE: THIS MAP WAS PREPARED FOR ASSESSMENT PURPOSES ONLY. NO LIABILITY IS ASSUMED FOR THE ACCURACY OF THE INFORMATION DELINEATED HEREON. ASSESSOR'S PARCELS MAY NOT COMPLY WITH LOCAL LOT SPLIT OR BUILDING SITE ORDINANCES.



060

FM.54-77 9-9-94
FM.PC.01 3-4-94
ASSESSOR'S MAP
BOOK 55 PAGE 06
CONTRA COSTA COUNTY,CALIF.