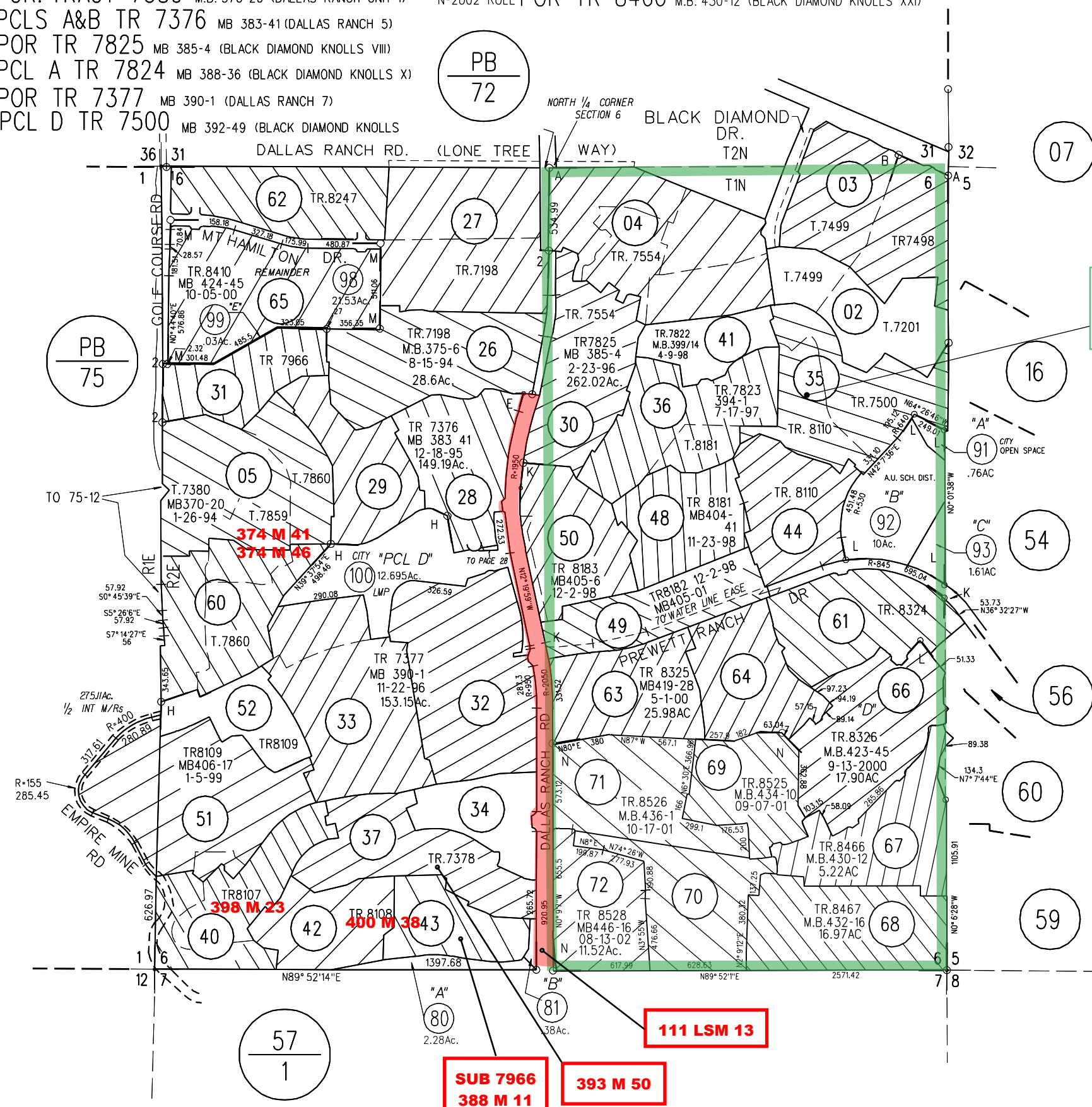


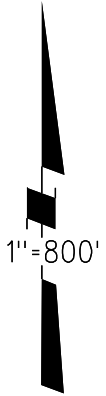
SEC. 6 T.1N T.2E M. D. B. & M.

- A-1991 ROLL- TRACT 7201 M.B. 354-40 (BLACK DIAMOND KNOLLS I)
- B-1992 ROLL- POR. TR. 7554 M.B. 359-20 (BLACK DIAMOND KNOLLS III)
- C-1994 ROLL- POR. TRACT 7380 M.B. 370-20 (DALLAS RANCH UNIT I)
- E-1996 ROLL- PCLS A&B TR 7376 MB 383-41 (DALLAS RANCH 5)
- F-1996 ROLL- POR TR 7825 MB 385-4 (BLACK DIAMOND KNOLLS VIII)
- G-1997 ROLL- PCL A TR 7824 MB 388-36 (BLACK DIAMOND KNOLLS X)
- H-1997 ROLL- POR TR 7377 MB 390-1 (DALLAS RANCH 7)
- I-1998 ROLL- PCL D TR 7500 MB 392-49 (BLACK DIAMOND KNOLLS
- K-1999 ROLL PCL A TR. 8110 M.B. 400-21 (BLACK DIAMOND KNOLLS XIV)
- L-2000 ROLL POR TR 8324 M.B. 417-24 (BLACK DIAMOND KNOLLS XVIII)
- M-2001 ROLL POR TR 8247 M.B. 418-14 (SANDHILL PROPERTY)
- N-2002 ROLL POR TR 8466 M.B. 430-12 (BLACK DIAMOND KNOLLS XXI)

1- 160PM3 10-19-92
2- 104 LSM 13 4-28-94



"C"
SUB 3056
DA 104



010

NOTE: THIS MAP WAS PREPARED FOR ASSESSMENT PURPOSES ONLY. NO LIABILITY IS ASSUMED FOR THE ACCURACY OF THE INFORMATION DELINEATED HEREON. ASSESSOR'S PARCELS MAY NOT COMPLY WITH LOCAL LOT SPLIT OR BUILDING SITE ORDINANCES.