

N 1/2 SEC. 33 T2N R2E M.D.B.M.

- 1- 19P.M.14 11-3-71
- 2- 39P.M.17 8-5-75
- 3- 39P.M.22 8-13-75
- A-1990 ROLL- PCL. A TRACT 6925 VIERA RANCH II, PHASE 1, M.B. 341-41
- B-2000 ROLL- PCL. A TRACT 7251 M.B.416-48(BEAR RIDGE-UNIT 2)
- C-2002 ROLL- PCL. F&G TRACT 7219 M.B.430-31(VIERA RANCH II, PHASE II)
- D-2003 ROLL- PCL. I&J TRACT 7220 M.B.439-16(VIERA RANCH II, PHASE III)
- 4- 59P.M.26&27 11-4-77
- 5- 81P.M.49&50 10-10-79
- 6- 138P.M.41 & 42 2-27-89
- M.B.416-48(BEAR RIDGE-UNIT 2)
- M.B.430-31(VIERA RANCH II, PHASE II)
- M.B.439-16(VIERA RANCH II, PHASE III)

- E-2004 ROLL- PCL. A TRACT 7505
- F-2004 ROLL- PCL. A TRACT 8387
- G-2004 ROLL- PCL. A TRACT 8388
- 7- 139PM32 5-3-89
- 8- 158PM1 3-2-92
- 9- 161 P.M. 26 2-18-93

- M.B.451-27(HIDDEN GLEN UNIT 2)
- M.B.451-35 01-30-03 (HIDDEN GLEN UNIT 3)
- M.B.451-41 01-30-03 (HIDDEN GLEN UNIT 4)

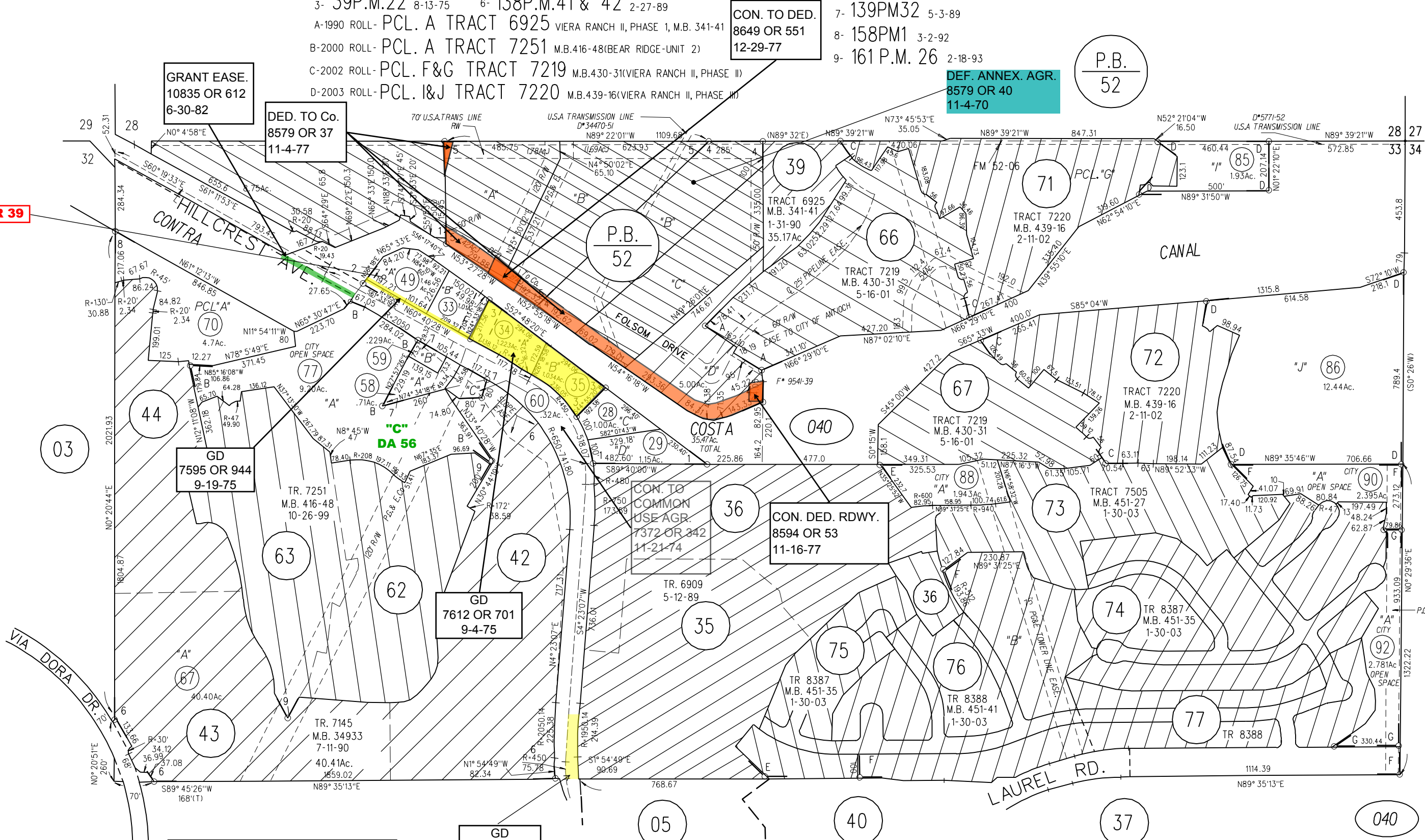
CON. TO DED. 8649 OR 551 12-29-77

DEF. ANNEX. AGR. 8579 OR 40 11-4-70

P.B. 52

99 CR 39

1" = 400'



NOTE: THIS MAP WAS PREPARED FOR ASSESSMENT PURPOSES ONLY. NO LIABILITY IS ASSUMED FOR THE ACCURACY OF THE INFORMATION DELINEATED HEREON. ASSESSOR'S PARCELS MAY NOT COMPLY WITH LOCAL LOT SPLIT OR BUILDING SITE ORDINANCES.