

194PM5 7/7/05 (HILLCREST COMMERCIAL CONDOS)

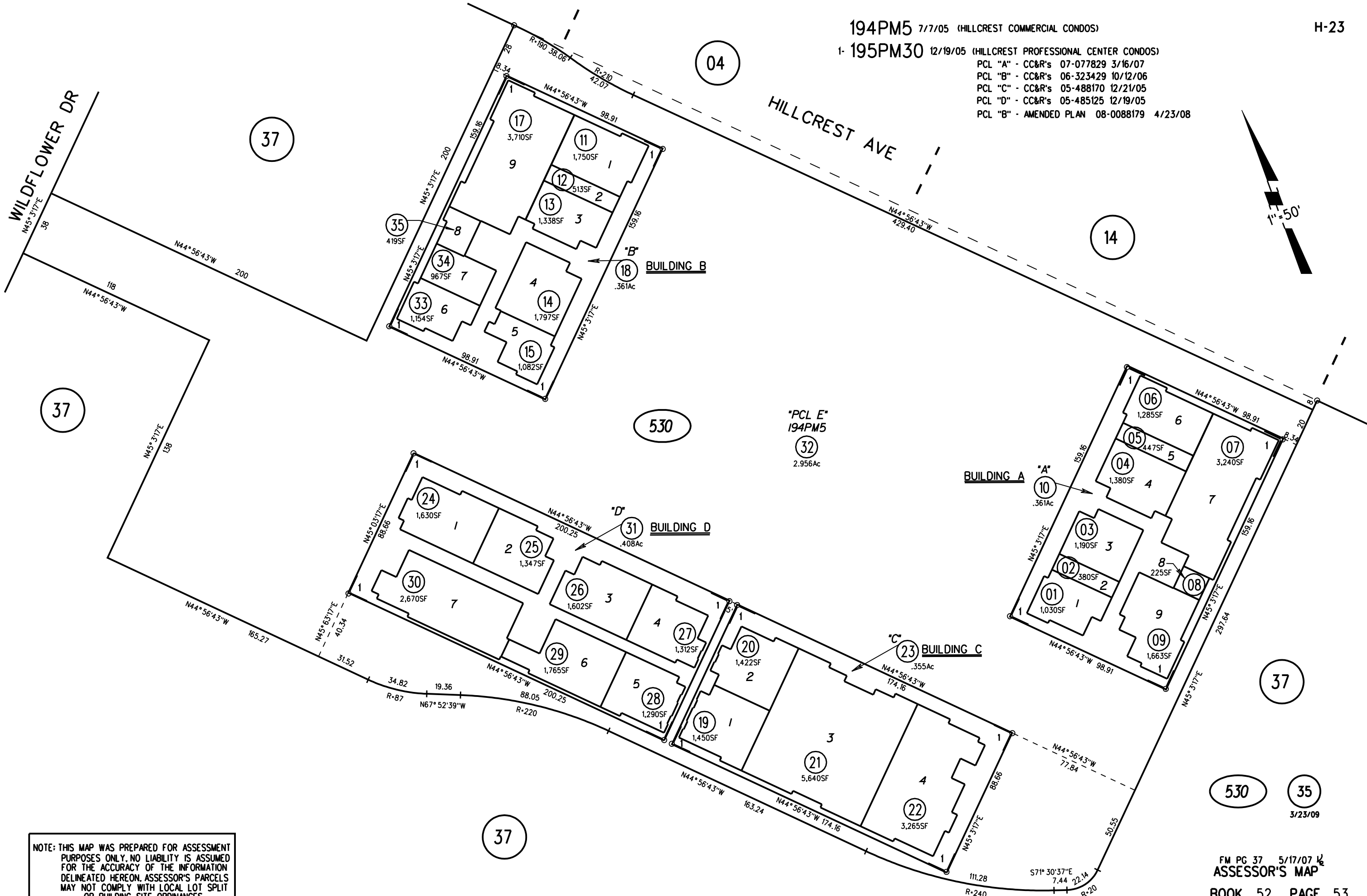
1- 195PM30 12/19/05 (HILLCREST PROFESSIONAL CENTER CONDOS)

- PCL "A" - CC&R's 07-077829 3/16/07
- PCL "B" - CC&R's 06-323429 10/12/06
- PCL "C" - CC&R's 05-488170 12/21/05
- PCL "D" - CC&R's 05-485125 12/19/05
- PCL "B" - AMENDED PLAN 08-0088179 4/23/08

1"=50'

WILDFLOWER DR

HILLCREST AVE



NOTE: THIS MAP WAS PREPARED FOR ASSESSMENT PURPOSES ONLY. NO LIABILITY IS ASSUMED FOR THE ACCURACY OF THE INFORMATION DELINEATED HEREON. ASSESSOR'S PARCELS MAY NOT COMPLY WITH LOCAL LOT SPLIT OR BUILDING SITE ORDINANCES.