

S 1/2 SEC 29 T2N R2E MDB&M

2- POR 73PM22 1-9-79

3- 111PM48 9-14-84

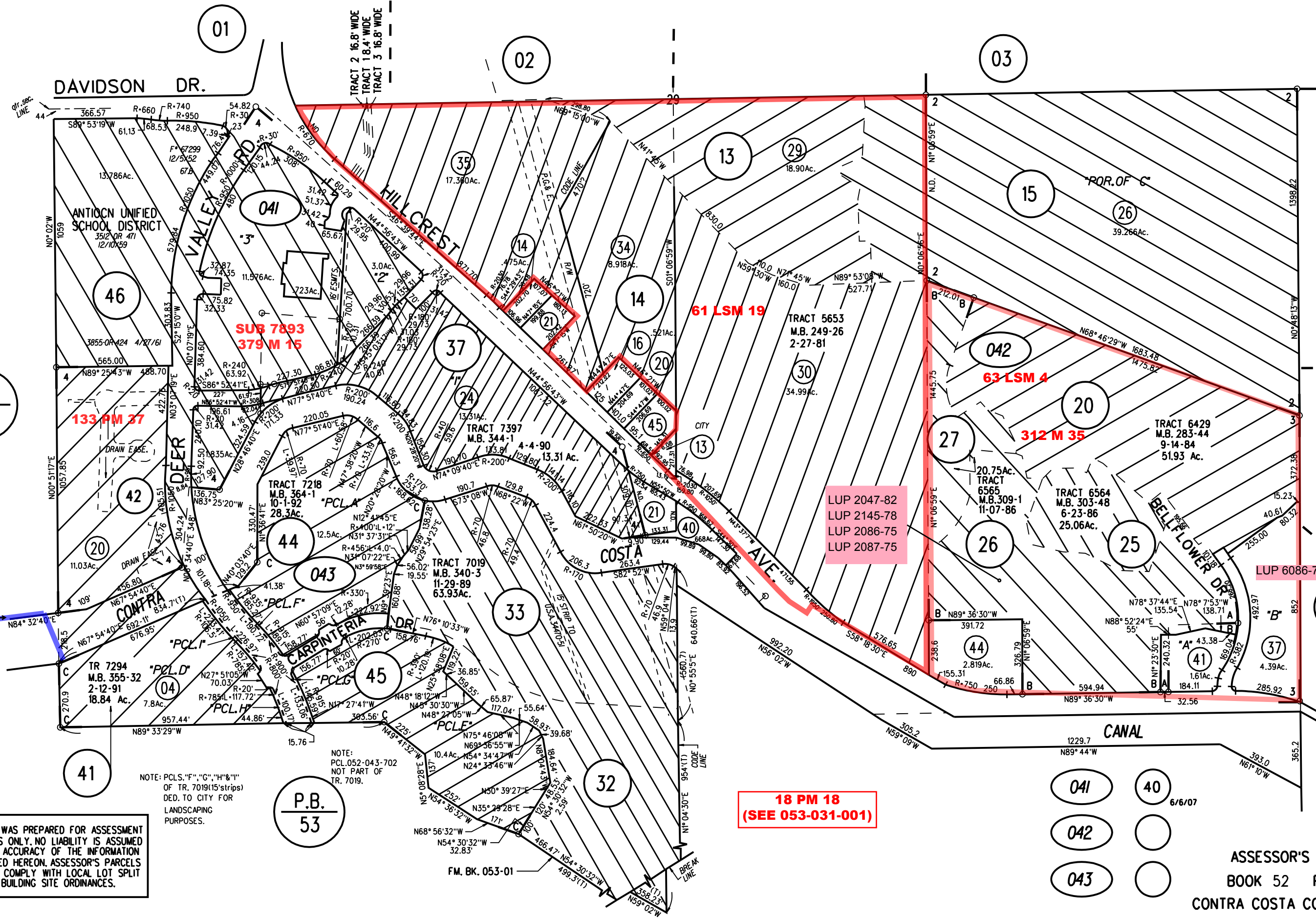
"1985" A- LOT A TRACT 6429 MB 282-44 (NORTHWOOD DOWNS)

"1987" B- PCL D TRACT 6564 MB 303-48 (NORTHWOOD DOWNS-2)

"1990" C- POR TRACT 7019 MB 340-3 (SHELLBOURNE)

H-23

1"=400'



041	40
042	6/6/07
043	