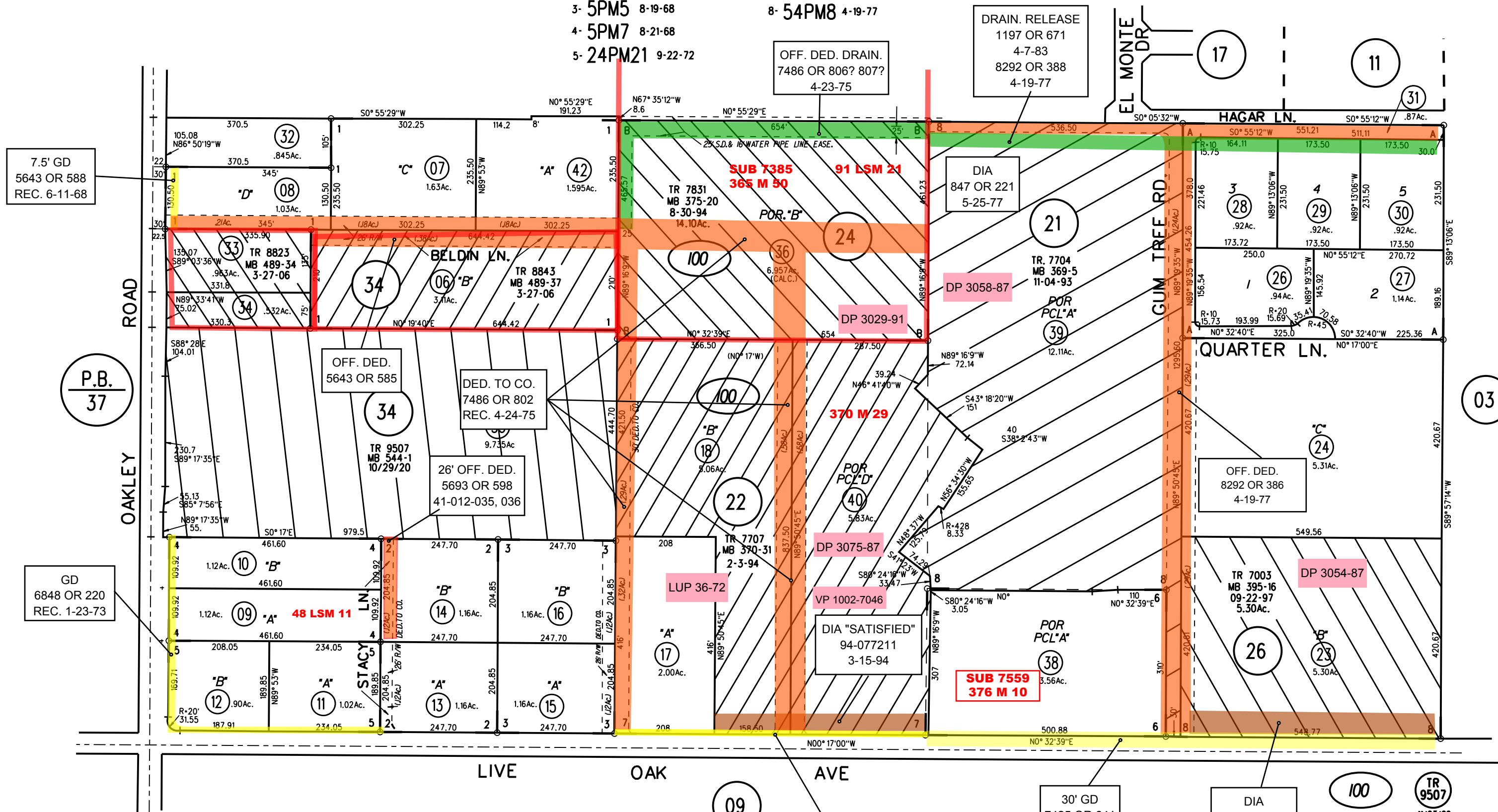


POR NE 1/4 SEC 27 T2N R2E MDBM

- 1- 4PM4 6-11-68
- 2- 5PM4 8-19-68
- 3- 5PM5 8-19-68
- 4- 5PM7 8-21-68
- 5- 24PM21 9-22-72
- 6- 36PM41 1-22-75
- 7- 37PM24 4-10-75
- 8- 54PM8 4-19-77

84 ROLL A- TR 5485 MB 269-4



7.5' GD
5643 OR 588
REC. 6-11-68

P.B.
37

GD
6848 OR 220
REC. 1-23-73

OFF. DED. DRAIN.
7486 OR 806? 807?
4-23-75

DRAIN. RELEASE
1197 OR 671
4-7-83
8292 OR 388
4-19-77

DIA
847 OR 221
5-25-77

OFF. DED.
5643 OR 585

DED. TO CO.
7486 OR 802
REC. 4-24-75

26' OFF. DED.
5693 OR 598
41-012-035, 036

DIA "SATISFIED"
94-077211
3-15-94

SUB 7559
376 M 10

OFF. DED.
8292 OR 386
4-19-77

DP 3054-87

30' GD
7425 OR 641
2-4-75

DIA
8292 OR 391
4-19-77

7.5' GD
7485 OR 916
REC. 4-23-75

NOTE: THIS MAP WAS PREPARED FOR ASSESSMENT PURPOSES ONLY. NO LIABILITY IS ASSUMED FOR THE ACCURACY OF THE INFORMATION DELINEATED HEREON. ASSESSOR'S PARCELS MAY NOT COMPLY WITH LOCAL LOT SPLIT OR BUILDING SITE ORDINANCES.