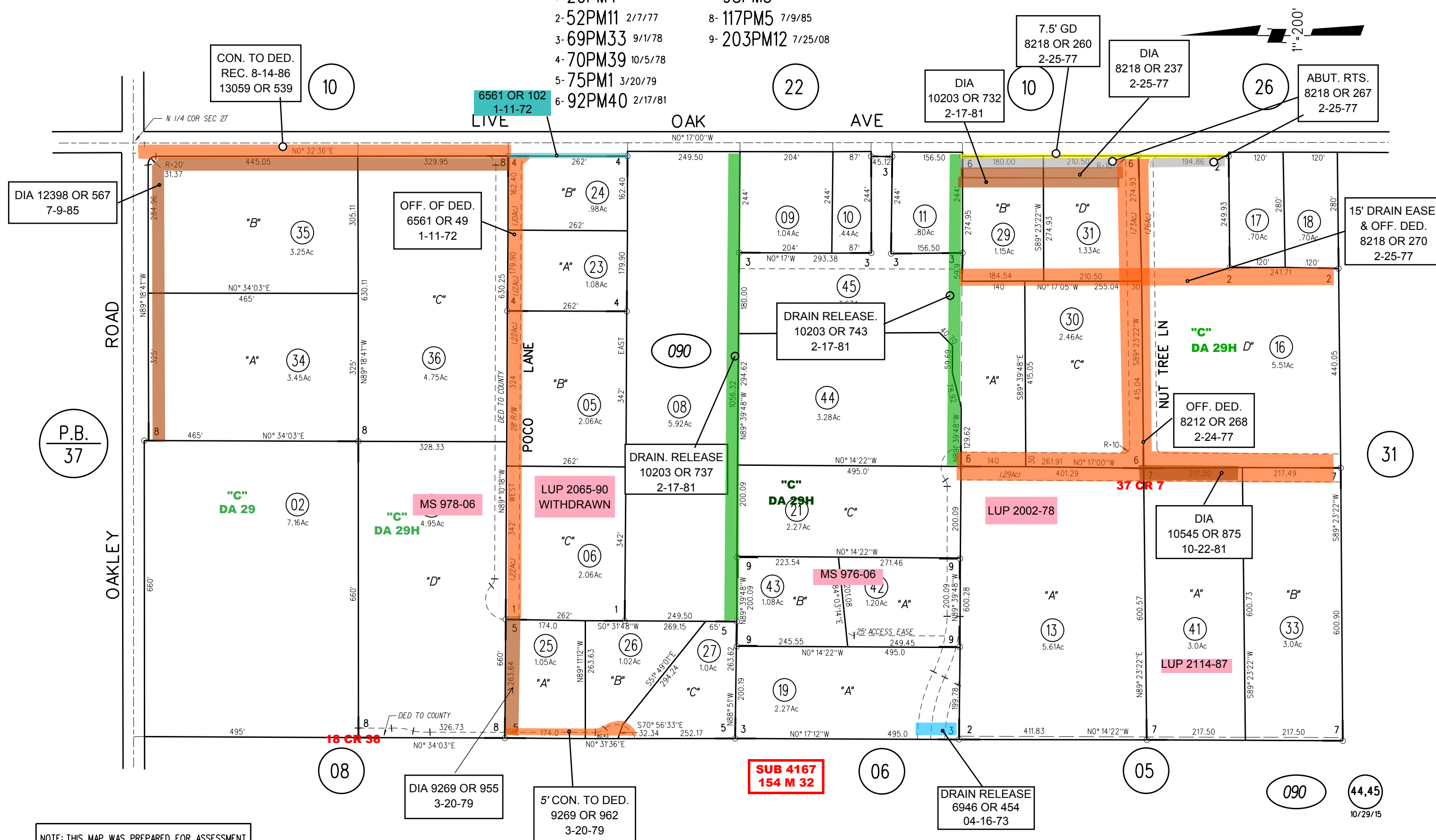


POR NW 1/4 SEC 27 T2N R2E MDBM

- 1- 20PM4 12/20/71
- 2- 52PM11 2/7/77
- 3- 69PM33 9/1/78
- 4- 70PM39 10/5/78
- 5- 75PM1 3/20/79
- 6- 92PM40 2/17/81
- 7- 98PM3 10/22/81
- 8- 117PM5 7/9/85
- 9- 203PM12 7/25/08



CON. TO DED.
REC. 8-14-86
13059 OR 539

6561 OR 102
1-11-72

DIA
10203 OR 732
2-17-81

7.5' GD
8218 OR 260
2-25-77

DIA
8218 OR 237
2-25-77

ABUT. RTS.
8218 OR 267
2-25-77

DIA 12398 OR 567
7-9-85

OFF. OF DED.
6561 OR 49
1-11-72

DRAIN RELEASE.
10203 OR 743
2-17-81

15' DRAIN EASE.
& OFF. DED.
8218 OR 270
2-25-77

P.B.
37

DRAIN. RELEASE
10203 OR 737
2-17-81

OFF. DED.
8212 OR 268
2-24-77

DIA 9269 OR 955
3-20-79

5' CON. TO DED.
9269 OR 962
3-20-79

SUB 4167
154 M 32

DRAIN RELEASE
6946 OR 454
04-16-73

NOTE: THIS MAP WAS PREPARED FOR ASSESSMENT PURPOSES ONLY. NO LIABILITY IS ASSUMED FOR THE ACCURACY OF THE INFORMATION DELINEATED HEREON. ASSESSOR'S PARCELS MAY NOT COMPLY WITH LOCAL LOT SPLIT OR BUILDING SITE ORDINANCES.