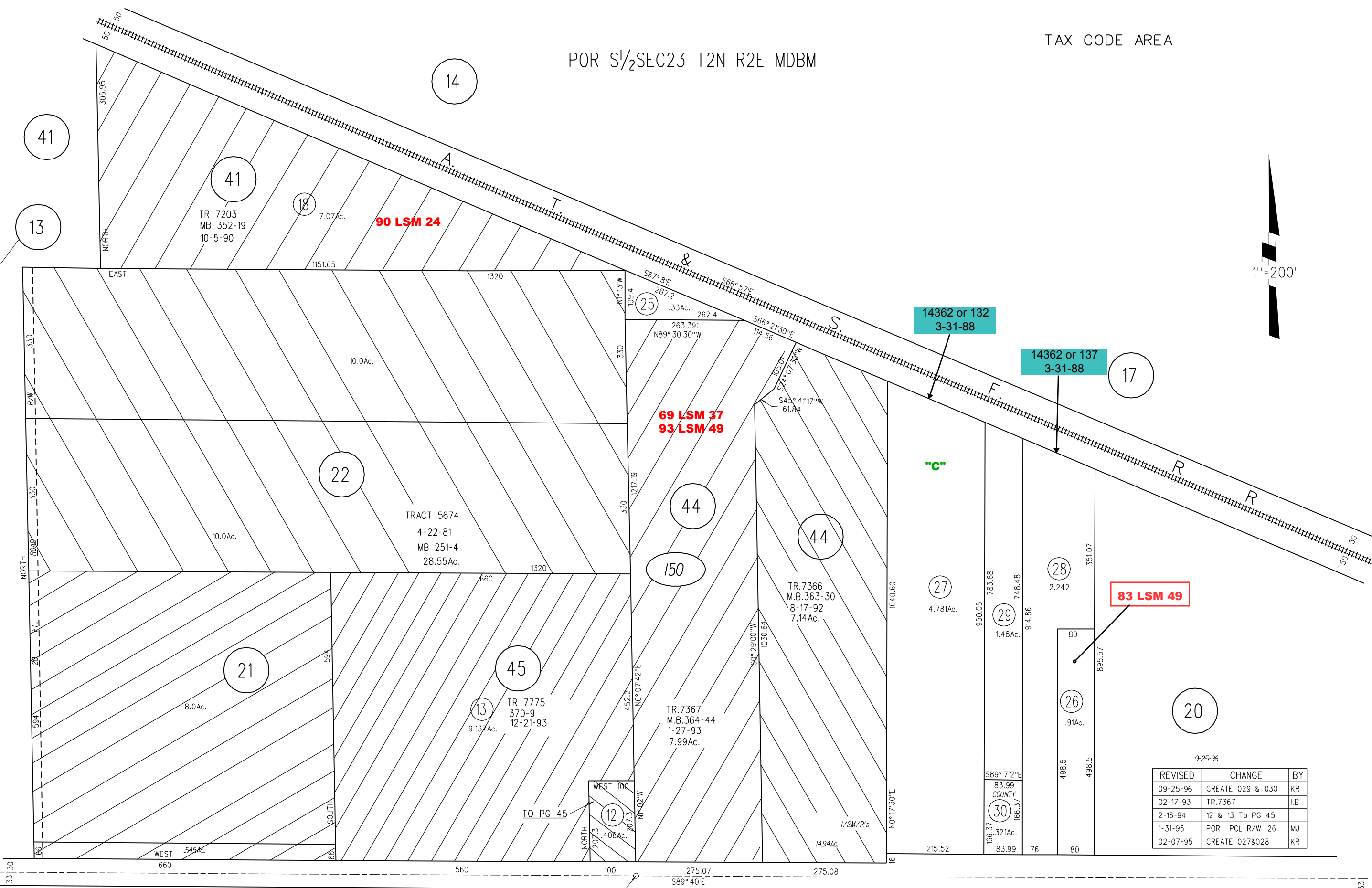
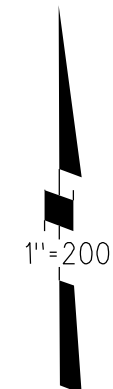


POR S¹/₂SEC23 T2N R2E MDBM

TAX CODE AREA



REVISED	CHANGE	BY
09-25-96	CREATE 029 & 030	KR
02-17-93	TR.7367	I.B
2-16-94	12 & 13 To PG 45	
1-31-95	POR PCL R/W 26	MJ
02-07-95	CREATE 027&028	KR

PB
35

150