

POR SE 1/4 SEC 25 T2N R2E MDBM

A-1979-ROLL TRACT 4889 MB 215-12

- 1- 44LSM10 8/5/66
- 2- 11PM24 12/5/69
- 3- 82PM36 11/8/79
- 4- 99PM7 12/15/81

25

27

1"=100'

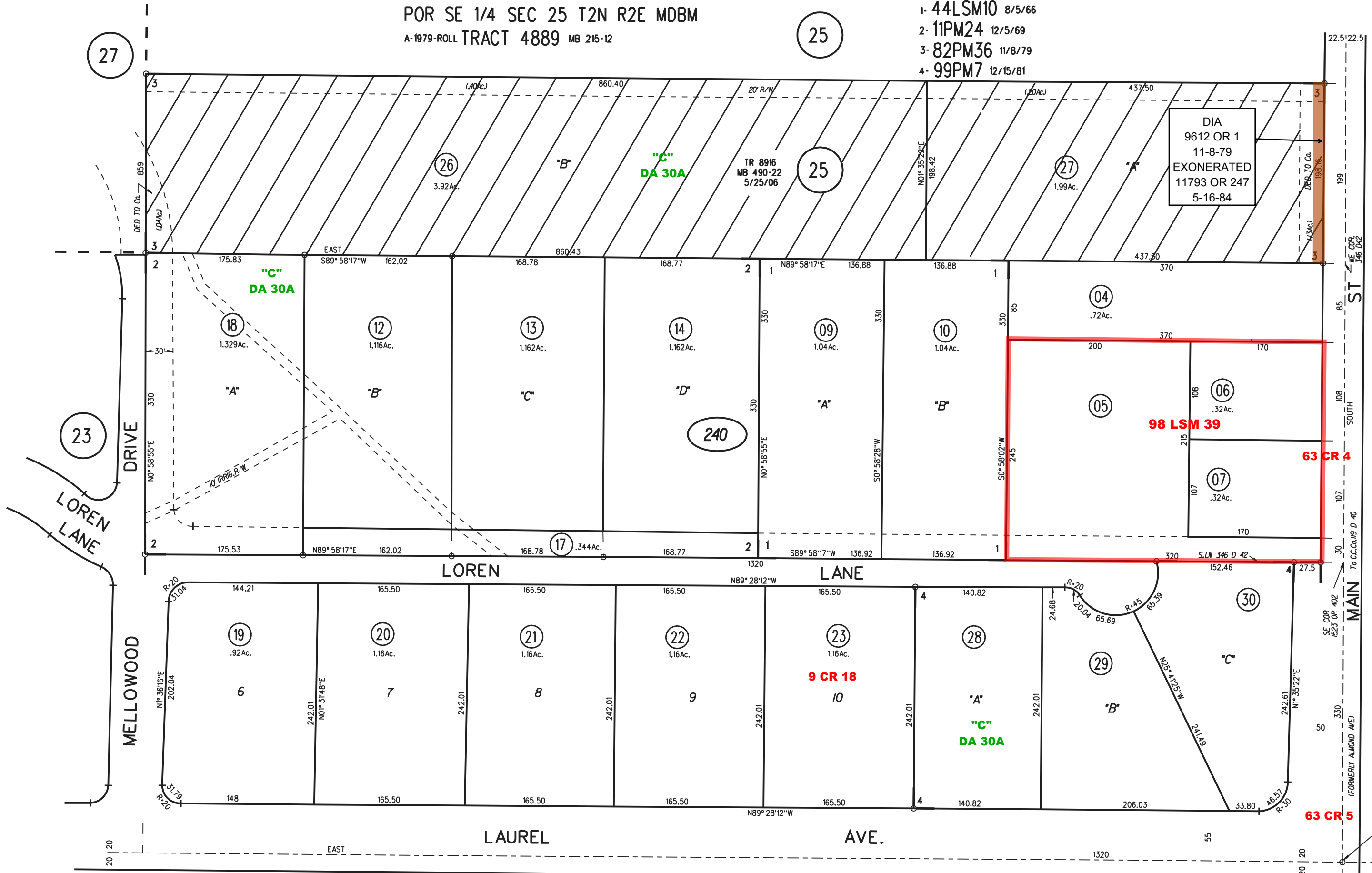
P.B. 33

P.B. 34

240

TR 8916 8/21/06

ASSESSOR'S MAP
 BOOK 35 PAGE 24
 CONTRA COSTA COUNTY, CALIF.



SE COR SEC 25

1961 ROLL 105/29