

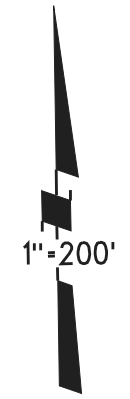
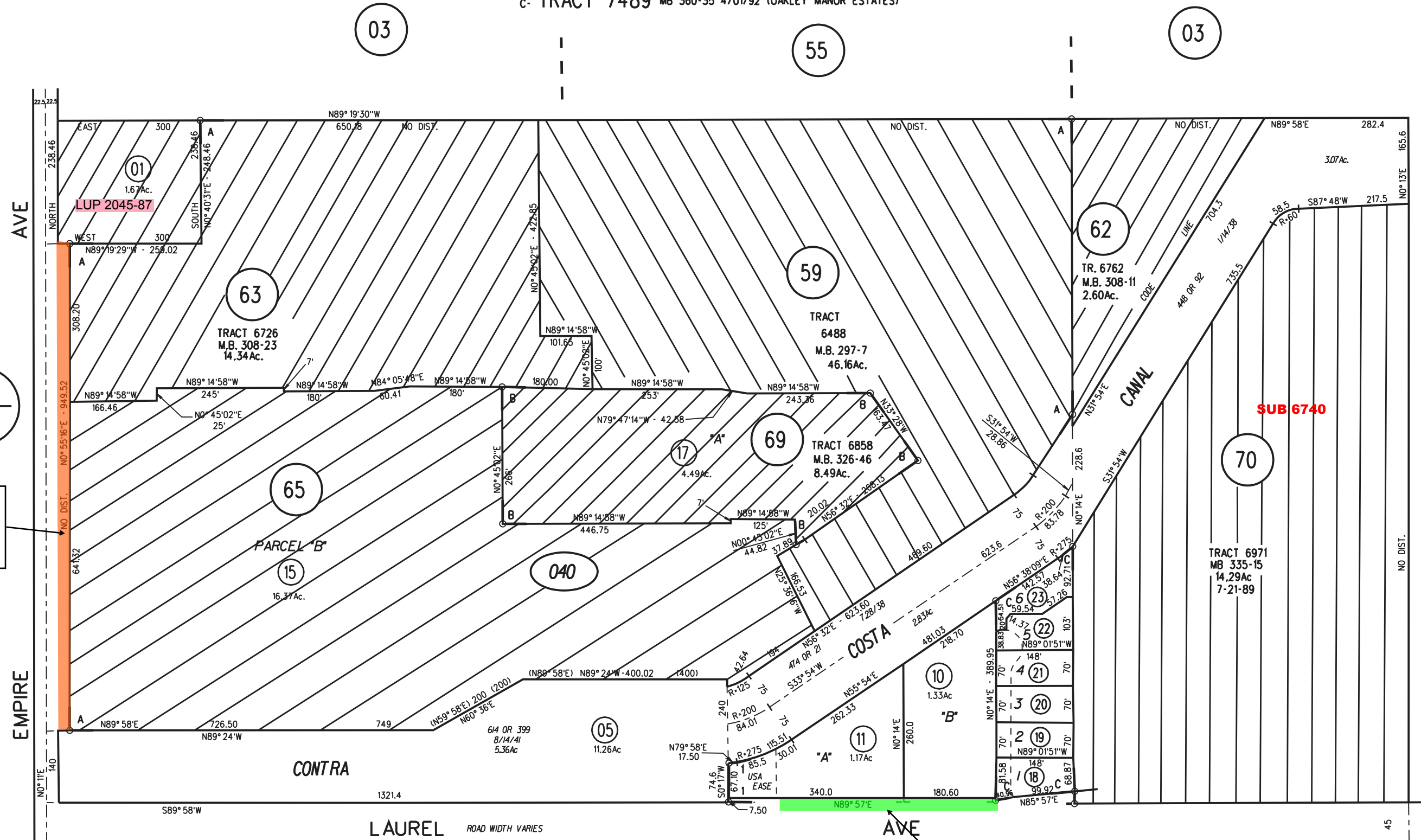
POR SW 1/4 SEC 26 T2N R2E MDBM

1. 4PM23 7/10/68

A- TRACT 6488 MB 297-7 12/12/85 (CONDON/GATEWAY UNIT I)

B- POR TRACT 6726 MB 308-23 11/04/86 (CONDON UNIT II)

C- TRACT 7489 MB 360-35 4/01/92 (OAKLEY MANOR ESTATES)



19' OFF. DED BY SUB 6488
ACCEPTED AS CO. RD.
10-20-87
13970 OR 516

7.5' WIDENING TO COUNTY
REC. 7-10-68 5663 OR 414

NOTE: THIS MAP WAS PREPARED FOR ASSESSMENT
PURPOSES ONLY. NO LIABILITY IS ASSUMED
FOR THE ACCURACY OF THE INFORMATION
DELINEATED HEREON. ASSESSOR'S PARCELS
MAY NOT COMPLY WITH LOCAL LOT SPLIT
OR BUILDING SITE ORDINANCES.

MAP CORRECTION
5/3/10