

POR. NE 1/4 SEC 35 T2N R2E M.D.B.M.

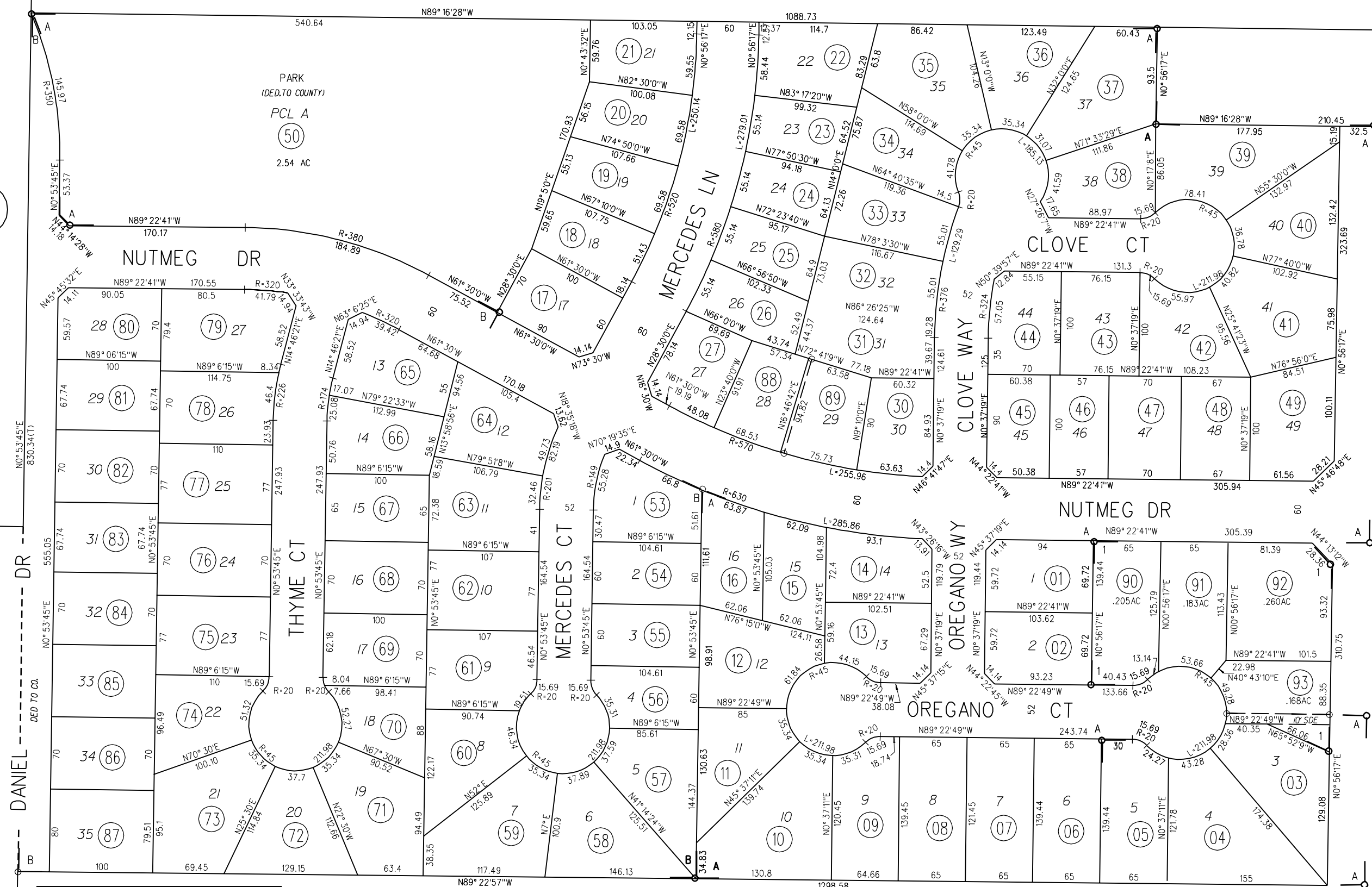
A-1996 ROLL-TRACT 7640 M.B. 381-49 (COUNTRY PLACE)
C.C. & R.'S 95-192222 (11-3-95)

08

B-1997 ROLL-TRACT 7945 M.B. 387-36 (COUNTRY PLACE UNIT II)

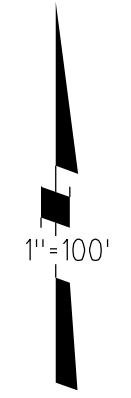
1- 170PM47 04-10-97

H-25



08

07



09

10

NOTE: THIS MAP WAS PREPARED FOR ASSESSMENT PURPOSES ONLY. NO LIABILITY IS ASSUMED FOR THE ACCURACY OF THE INFORMATION DELINEATED HEREON. ASSESSOR'S PARCELS MAY NOT COMPLY WITH LOCAL LOT SPLIT OR BUILDING SITE ORDINANCES.

REVISED	CHANGE	BY
12-12-95	PCL 52 (LLA)	IB
07-26-96	TR7945	MJ
08-01-96	SPLT/CRE PCLS88,9	MJ
06-18-97	170PM48	MJ

300

FM. PG. 7 & 8 12-12-95
ASSESSOR'S MAP
BOOK 34 PAGE 30
CONTRA COSTA COUNTY, CALIF.