

POR NE 1/4 SEC 35 T2N R2E MDBM

GD
6710 OR 244
7-28-72

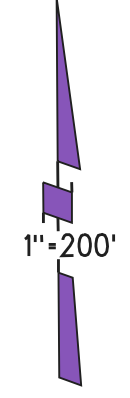
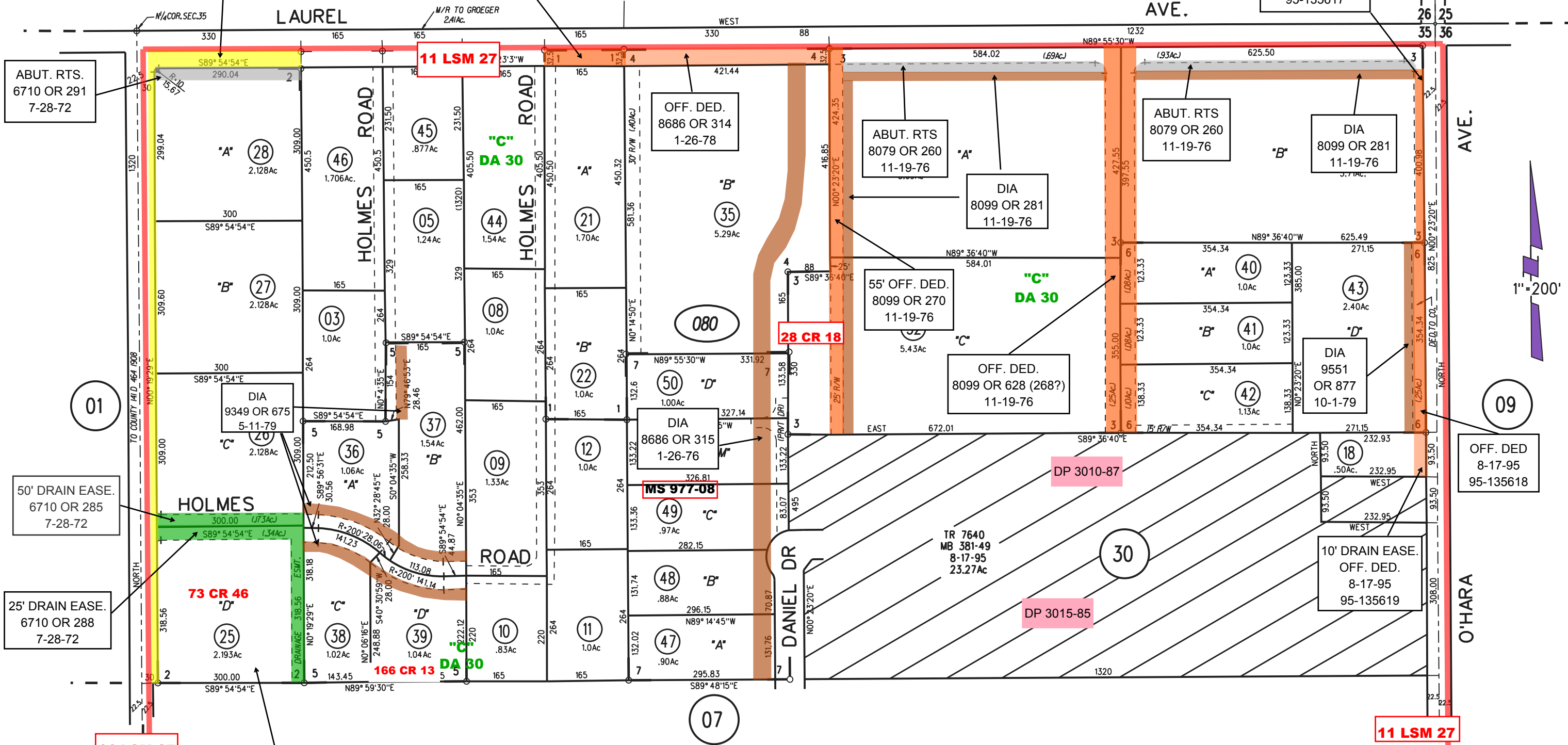
32.5' OFF. DED.
6341 OR 155
3-19-71

- 1- 15PM27 2/2/71
- 2- 22PM33 6/16/72
- 3- 49PM20 10/21/76

PB
35

- 4- 62PM42 1/26/78
- 5- 76PM38 5/11/59
- 6- 81PM29 10/1/79
- 7- 214PM4 5/10/18

10 DRAIN. EASE.
OFF. DED.
8-17-95
95-135617



LUP 2033-87
LUP 2015-85
NOTE: THIS MAP IS FOR ASSESSMENT PURPOSES ONLY. NO LIABILITY IS ASSUMED FOR THE ACCURACY OF THE INFORMATION DELINEATED HEREON. ASSESSOR'S PARCELS MAY NOT COMPLY WITH LOCAL LOT SPLIT OR BUILDING SITE ORDINANCES.