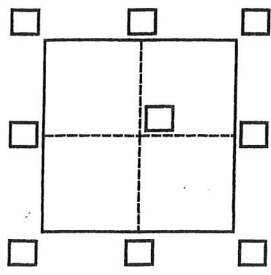


CORNER RECORD

Agency Index 223 CE JS
 Document Number -10400

City of ORINDA County of CONTRA COSTA, California
 Brief Legal Description LOT 11 BLOCK 0 ZOM 528



CORNER TYPE

- Government Corner Control
 Meander Property
 Rancho Other

Date of Survey 10-10-20

COORDINATES (Optional)

- N. _____ E. _____
 Elevation _____
 Units Metric U.S. Survey Foot
 Horizontal Datum _____
 Zone _____ Epoch Date _____
 Vertical Datum _____
 Complies with Public Resources Code §§8801-8819
 Complies with Public Resources Code §§8890-8902

- PLS Act Ref.: 8765(d) 8771 8773 Other:
 Corner/Monument: Left as found Established Rebuilt Pre-Construction
 Found and tagged Reestablished Referenced Post-Construction

Narrative of corner identified and monument as found, set, reset, replaced, or removed:
 See sheet #2 for description(s):

SURVEYOR'S STATEMENT

This Corner Record was prepared by me or under my direction in conformance with
 the Professional Land Surveyors' Act on 10-14-20
 Signed Matthew Chapman P.L.S. or R.C.E. No. 7054



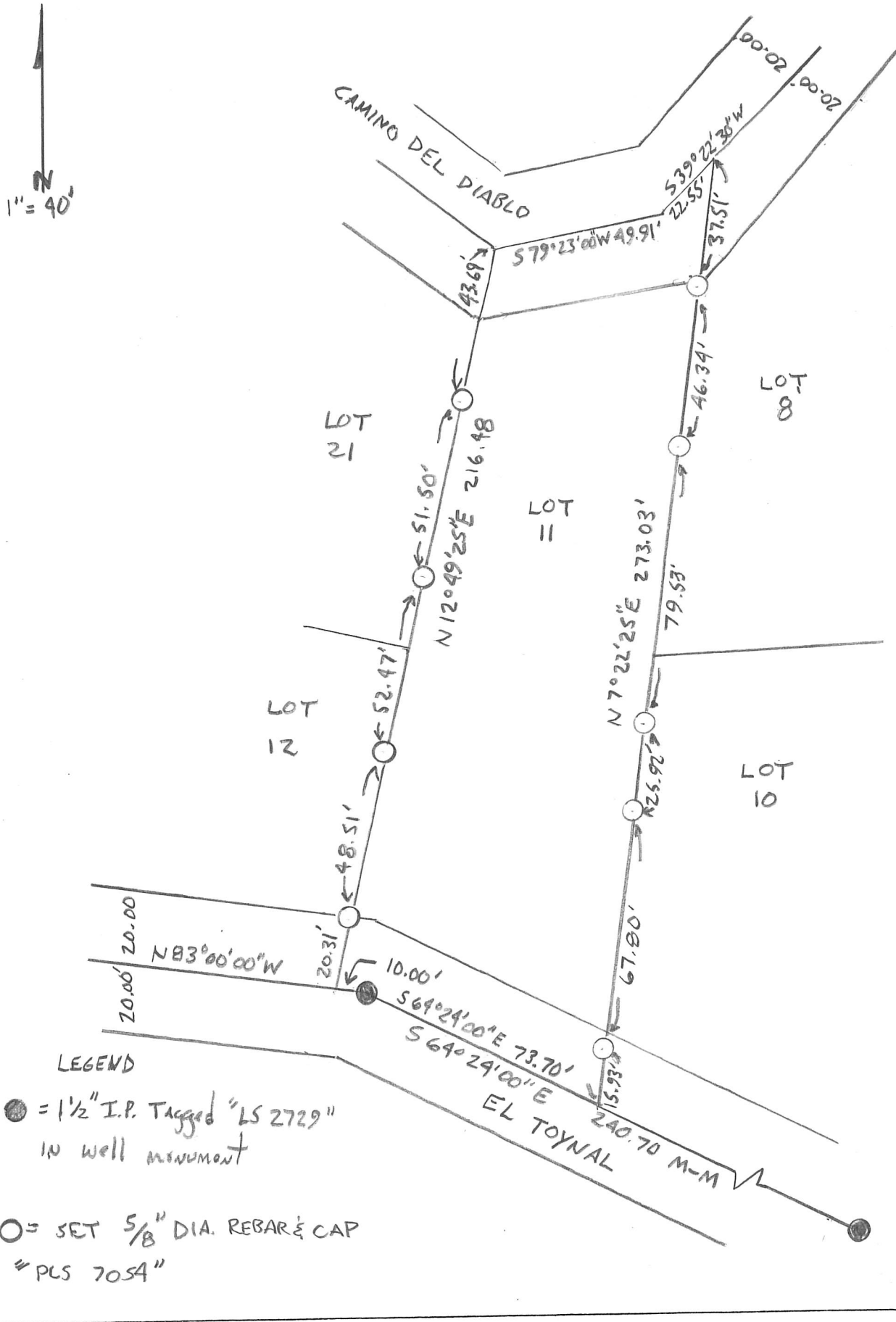
COUNTY SURVEYOR'S STATEMENT

This Corner Record was received October 28th 2020
 and examined and filed November 19th 2020
 Signed James A. Stein P.L.S. or R.C.E. No. 6571
 Title County Surveyor



County Surveyor's Comment

APN # 264-101-004



LEGEND

● = 1 1/2" I.P. Tagged "LS 2729"
IN well monument

○ = SET 5/8" DIA. REBAR & CAP
"PLS 7054"