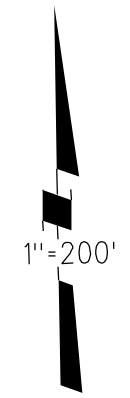
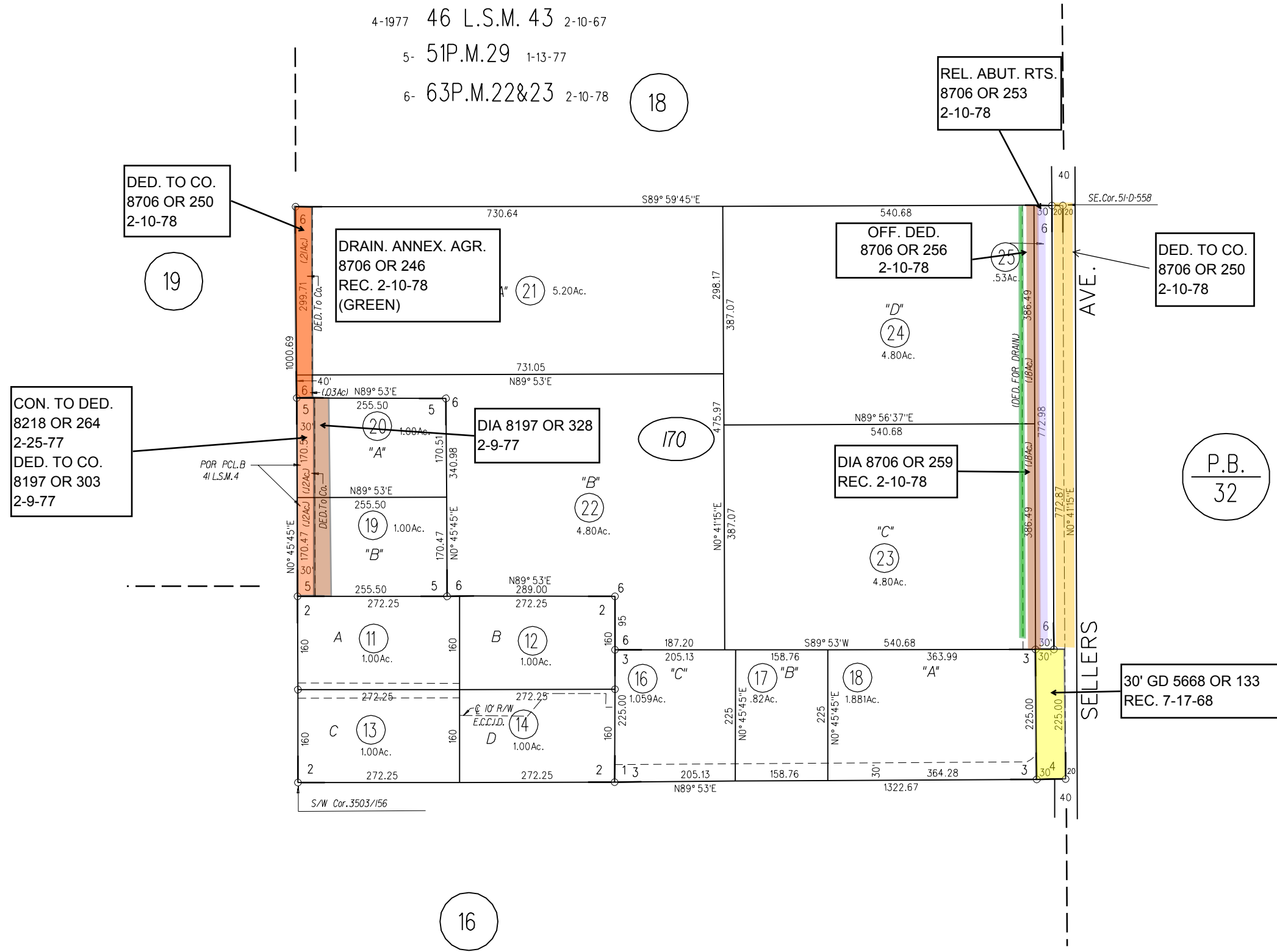


POR. SE 1/4, SEC. 30, T.2N., R.3E., M.D.B.&M.

- 1-1967 RECORD OF SURVEY 41-L.S.M.-4 3/23/66
- 2-1968 RECORD OF SURVEY 47-L.S.M.-32 4/12/67
- 3-1969 - 4 P.M. 27 - 7-17-68
- 4-1977 46 L.S.M. 43 2-10-67
- 5- 51P.M.29 1-13-77
- 6- 63P.M.22&23 2-10-78



170