

1981 - A - TR. 5801 M.B.246-20

POR. SE 1/4 SEC. 31, T2N R3E M.D.B. & M.

7&8

11- 103P.M.29,30,31 11-2-82

1 - 9L.S.M. 37 - 4/16/45

15 - 154P.M. 29 9-18-91

5 - 13P.M. & 8 6-1-70

8 - 35P.M.34&35 10-7-74

12- 129P.M. 41 & 42 9-17-87

2 -1970 - 28 L.S.M.38 7/2/64

6 - 19P.M.24 11-16-71

9 - 61P.M.9 & 10 12-19-77

13- 132PM 38 4-05-88

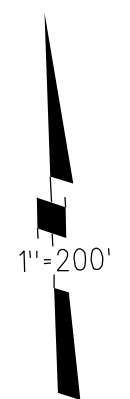
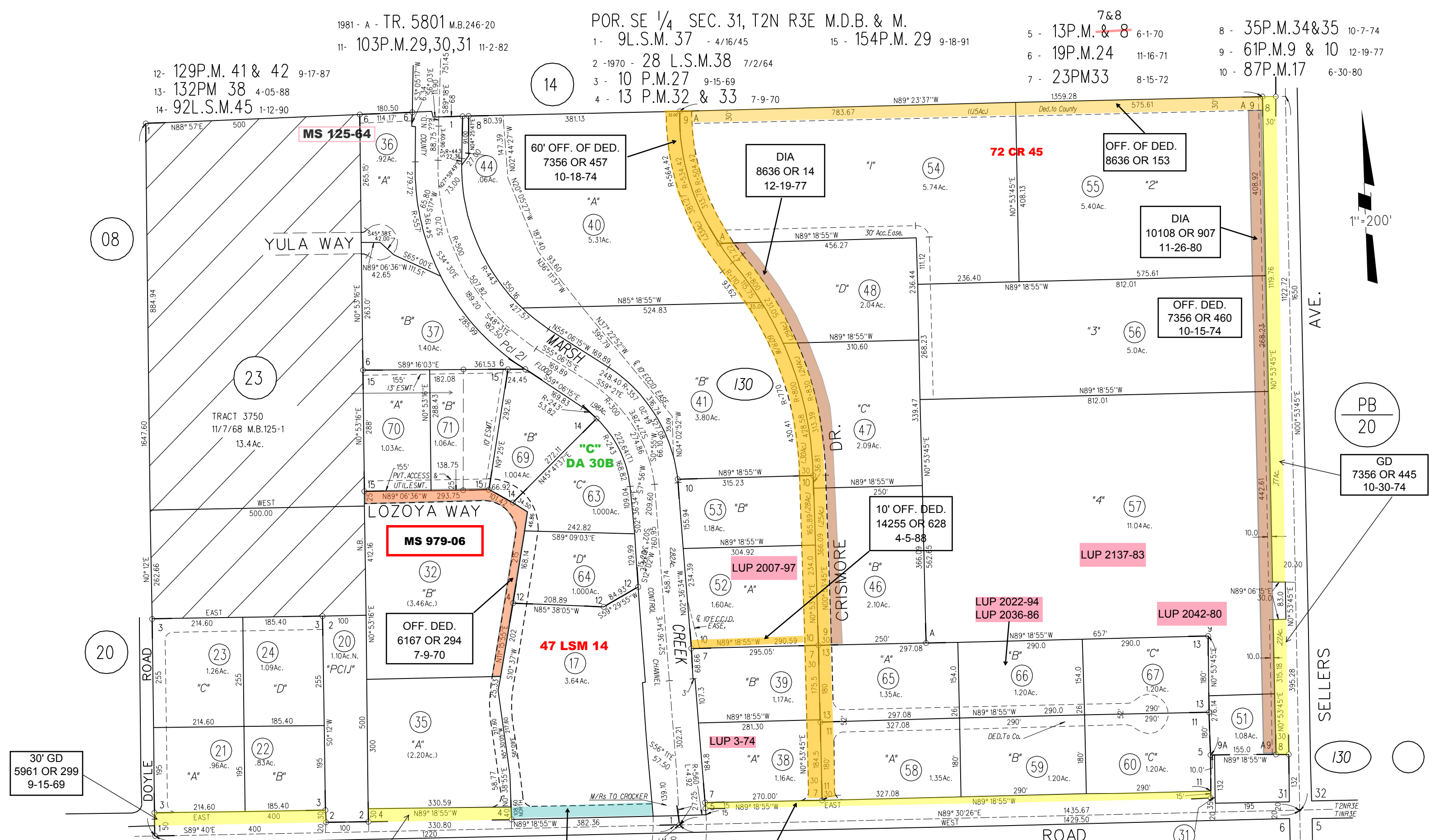
3 - 10 P.M.27 9-15-69

7 - 23PM33 8-15-72

10 - 87P.M.17 6-30-80

14- 92L.S.M.45 1-12-90

4 - 13 P.M.32 & 33 7-9-70



30' GD
5961 OR 299
9-15-69

30' GD
6167 OR 298
7-9-70

RES.# 4809B
3083? OR 461
5083? OR 461
3-23-66

5100 OR 62
4-15-66

15' GD
6140 OR 321
6-1-70

PB
18

REVISED	CHANGE	BY
11-20-91	154 P.M. 29	JAC