

POR NW 1/4 SEC 31, T2N R3E MDB&M
1- RECORD OF SURVEY 27 LSM 42 5-13-64

2- RECORD OF SURVEY 29 L. M. S. 42 8-26-64
3- 58PM46 10-25-77

02 4- 83PM8 12-5-79
5- 97PM9 8-17-81
A- PCL "C" TR 6963 MB 432-23
B- PCL "2" TR 8650 MB 445-11

LAUREL AVE

AVE
NORTH

(HIGHWAY NO 4)

ALMOND

LAUREL RD

TETON RD

HONEY LN

SALVADOR LN

NOTE: THIS MAP WAS PREPARED FOR ASSESSMENT PURPOSES ONLY. NO LIABILITY IS ASSUMED FOR THE ACCURACY OF THE INFORMATION DELINEATED HEREON. ASSESSOR'S PARCELS MAY NOT COMPLY WITH LOCAL LOT SPLIT OR BUILDING SITE ORDINANCES.

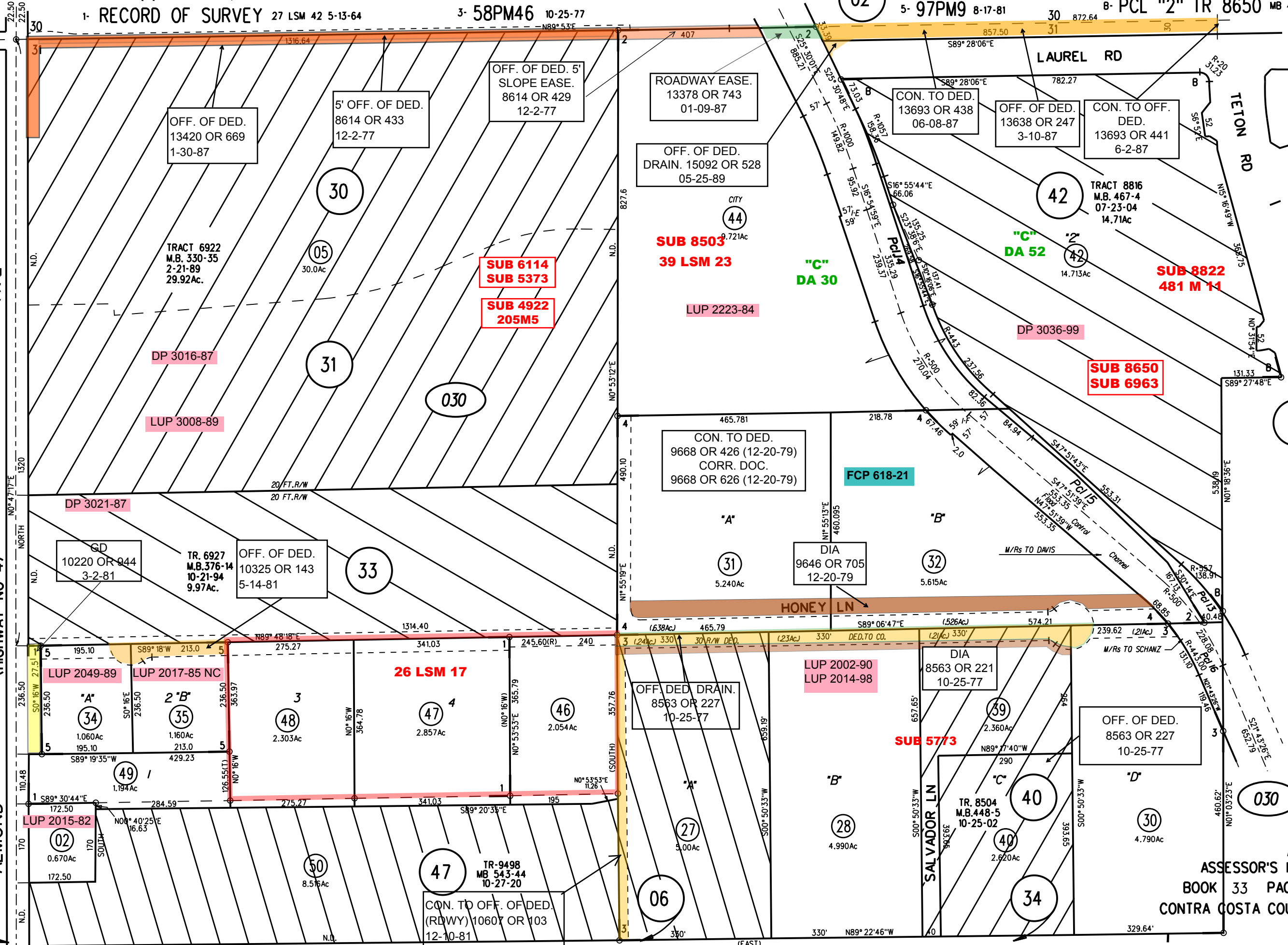
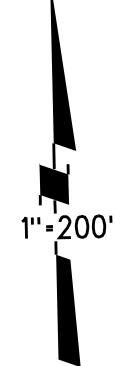
PB 34

36

15

TR 9498 12/21/20

ASSESSOR'S MAP
BOOK 33 PAGE 03
CONTRA COSTA COUNTY, CALIF.



OFF. OF DED. 13420 OR 669 1-30-87

5' OFF. OF DED. 8614 OR 433 12-2-77

OFF. OF DED. 5' SLOPE EASE. 8614 OR 429 12-2-77

ROADWAY EASE. 13378 OR 743 01-09-87

OFF. OF DED. DRAIN. 15092 OR 528 05-25-89

CON. TO DED. 13693 OR 438 06-08-87

OFF. OF DED. 13638 OR 247 3-10-87

CON. TO OFF. DED. 13693 OR 441 6-2-87

TRACT 6922 M.B. 330-35 2-21-89 29.92Ac.

SUB 6114
SUB 5373

SUB 4922
205M5

SUB 8503
39 LSM 23

LUP 2223-84

"C" DA 52

TRACT 8816 M.B. 467-4 07-23-04 14.71Ac

SUB 8822
481 M 14

SUB 8650
SUB 6963

CON. TO DED. 9668 OR 426 (12-20-79)
CORR. DOC. 9668 OR 626 (12-20-79)

FCP 618-21

DIA 9646 OR 705 12-20-79

GD 10220 OR 944 3-2-81

TR. 6927 M.B. 376-14 10-21-94 9.97Ac.

OFF. OF DED. 10325 OR 143 5-14-81

LUP 2049-89

LUP 2017-85 NC

26 LSM 17

OFF. DED. DRAIN. 8563 OR 227 10-25-77

LUP 2002-90
LUP 2014-98

DIA 8563 OR 221 10-25-77

OFF. OF DED. 8563 OR 227 10-25-77

LUP 2015-82

TR-9498 MB 543-44 10-27-20

CON. TO OFF. OF DED. (RDWY) 10607 OR 103 12-10-81

TR. 8504 M.B. 448-5 10-25-02

04

47

27

28

34

030