

- 33 1- 4PM49 8/12/68
- 2- 120PM16 12/12/85
- 3- 206PM11 4/26/11

1"=800'
DIA
8819 OR 95
5-3-78

P.B.
27

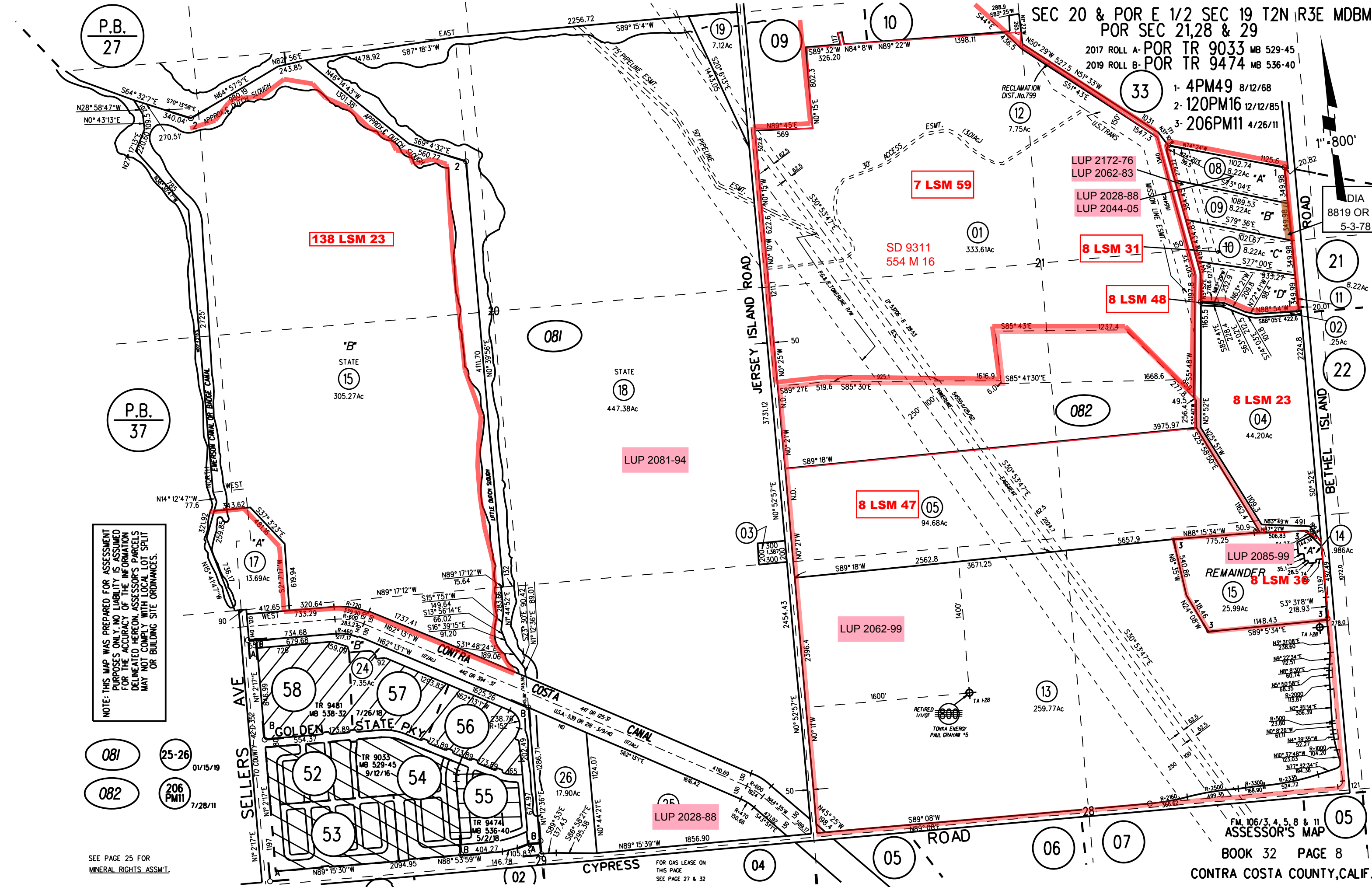
P.B.
37

NOTE: THIS MAP WAS PREPARED FOR ASSESSMENT PURPOSES ONLY. NO LIABILITY IS ASSUMED FOR THE ACCURACY OF THE INFORMATION DELINEATED HEREON. ASSESSOR'S PARCELS MAY NOT COMPLY WITH LOCAL LOT SPLIT OR BUILDING SITE ORDINANCES.

081 25-26 01/15/19
082 206 PM11 7/28/11

SEE PAGE 25 FOR MINERAL RIGHTS ASSM'T.

ASSESSOR'S MAP
BOOK 32 PAGE 8
CONTRA COSTA COUNTY, CALIF.



FOR GAS LEASE ON THIS PAGE SEE PAGE 27 & 32