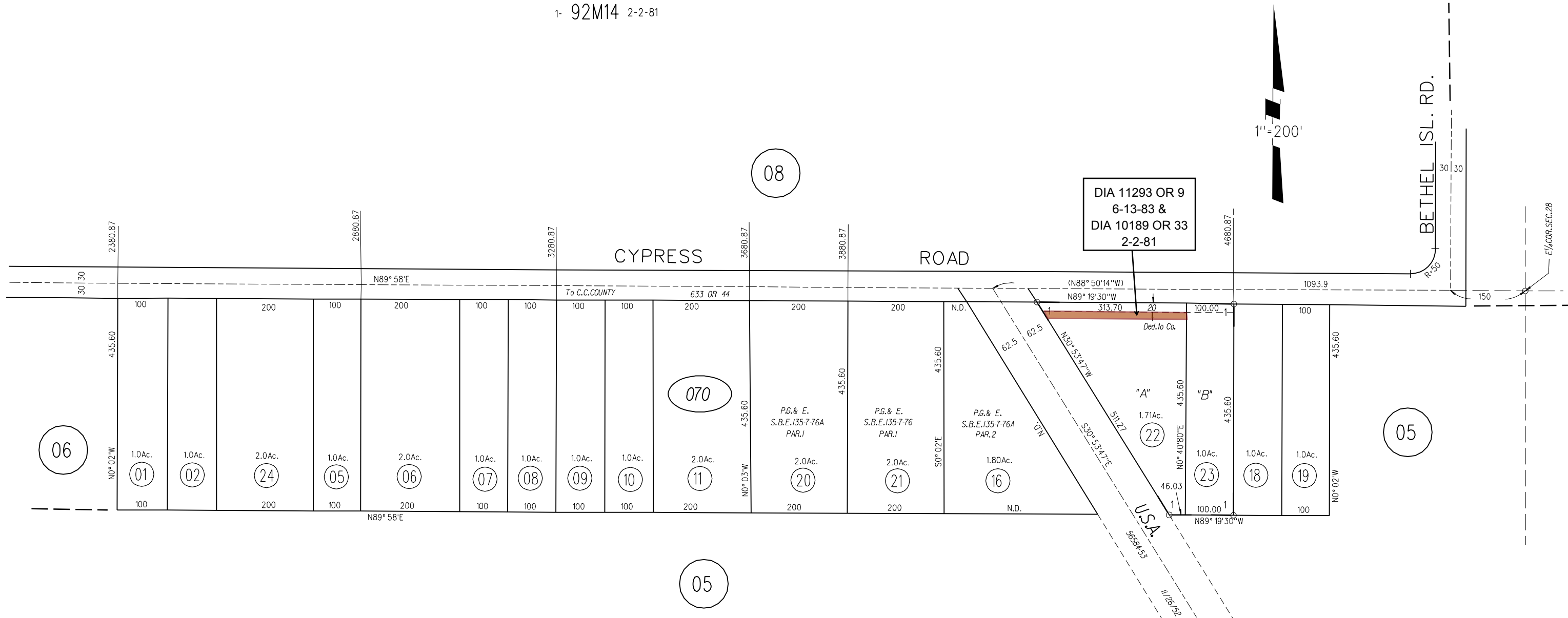


POR S 1/2 SEC 28 T2N R3E MDBM

1- 92M14 2-2-81



DIA 11293 OR 9
6-13-83 &
DIA 10189 OR 33
2-2-81

06

08

070

05

05

SEE PAGE 25 FOR MINERAL RIGHTS ASSESSMENT.

SEE PAGE 27 FOR GAS LEASE.

NOTE: THIS MAP WAS PREPARED FOR ASSESSMENT PURPOSES ONLY. NO LIABILITY IS ASSUMED FOR THE ACCURACY OF THE INFORMATION DELINEATED HEREON. ASSESSOR'S PARCELS MAY NOT COMPLY WITH LOCAL LOT SPLIT OR BUILDING SITE ORDINANCES.

070

0