

POR SE 1/4 SEC 29 T2N R3E MDBM

1-15PM47 3-15-71

H-26
H-27

GD
4-14-71
6359 OR 296

08

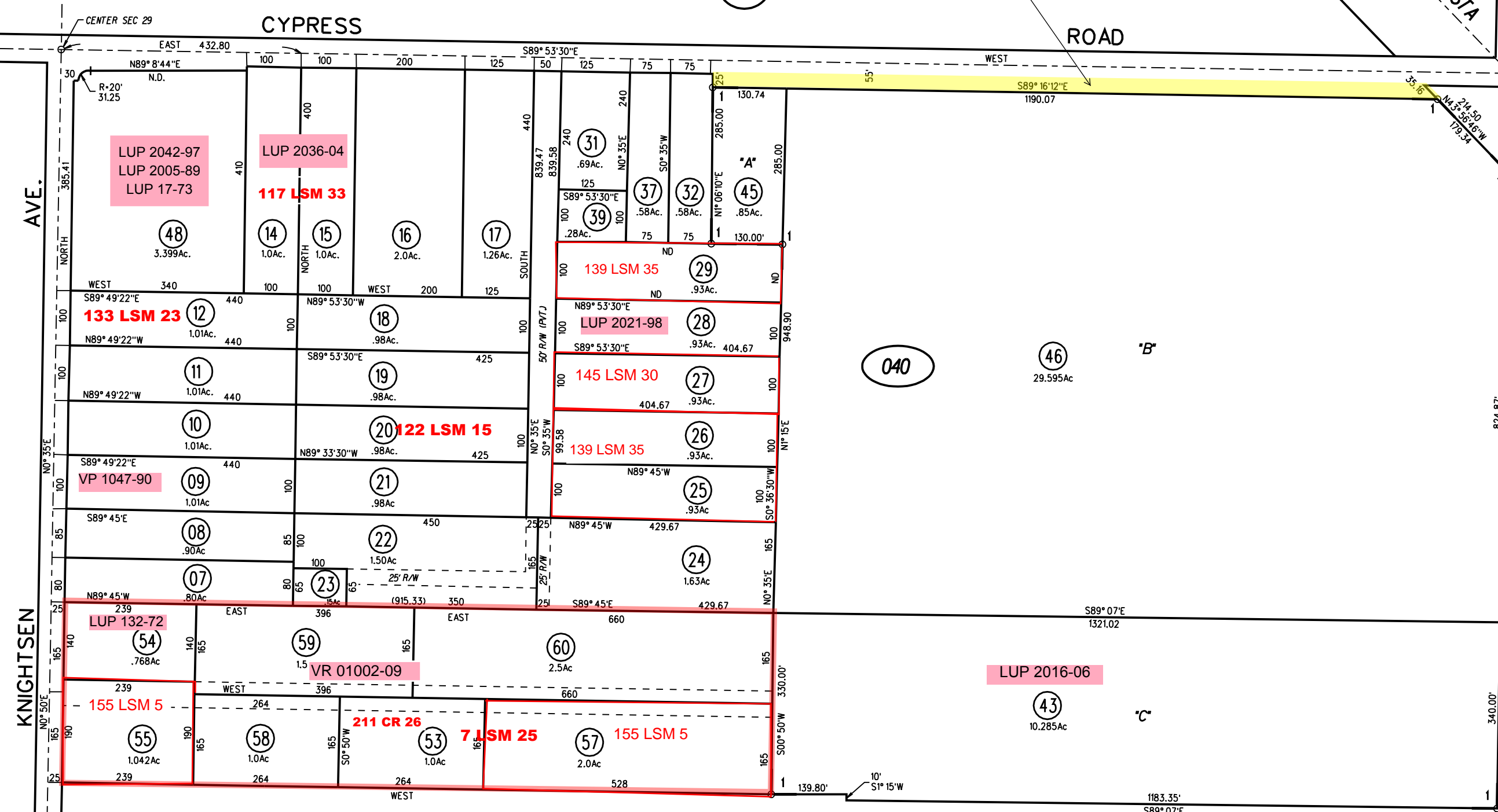
02

05

03

040

60
12/8/10



LUP 2042-97
LUP 2005-89
LUP 17-73

LUP 2036-04
117 LSM 33

133 LSM 23

139 LSM 35

LUP 2021-98

145 LSM 30

139 LSM 35

LUP 132-72

155 LSM 5

VR 01002-09

211 CR 26

7 LSM 25

LUP 2016-06

155 LSM 5

NOTE: THIS MAP WAS PREPARED FOR ASSESSMENT PURPOSES ONLY. NO LIABILITY IS ASSUMED FOR THE ACCURACY OF THE INFORMATION DELINEATED HEREON. ASSESSOR'S PARCELS MAY NOT COMPLY WITH LOCAL LOT SPLIT OR BUILDING SITE ORDINANCES.

SEE PAGE 27 FOR MINERAL RIGHTS ASSESSMENTS

