

POR S1/2 SEC 16 T2N R3E MDBM
1- RECORD OF SURVEY 36L.S.M.19 7-28-65

TAX CODE AREA

PB
28

ALL M/R Int.
Below 500'
11.08Ac.

DP 3015-08
LP 2010-08
RZ 3201-08

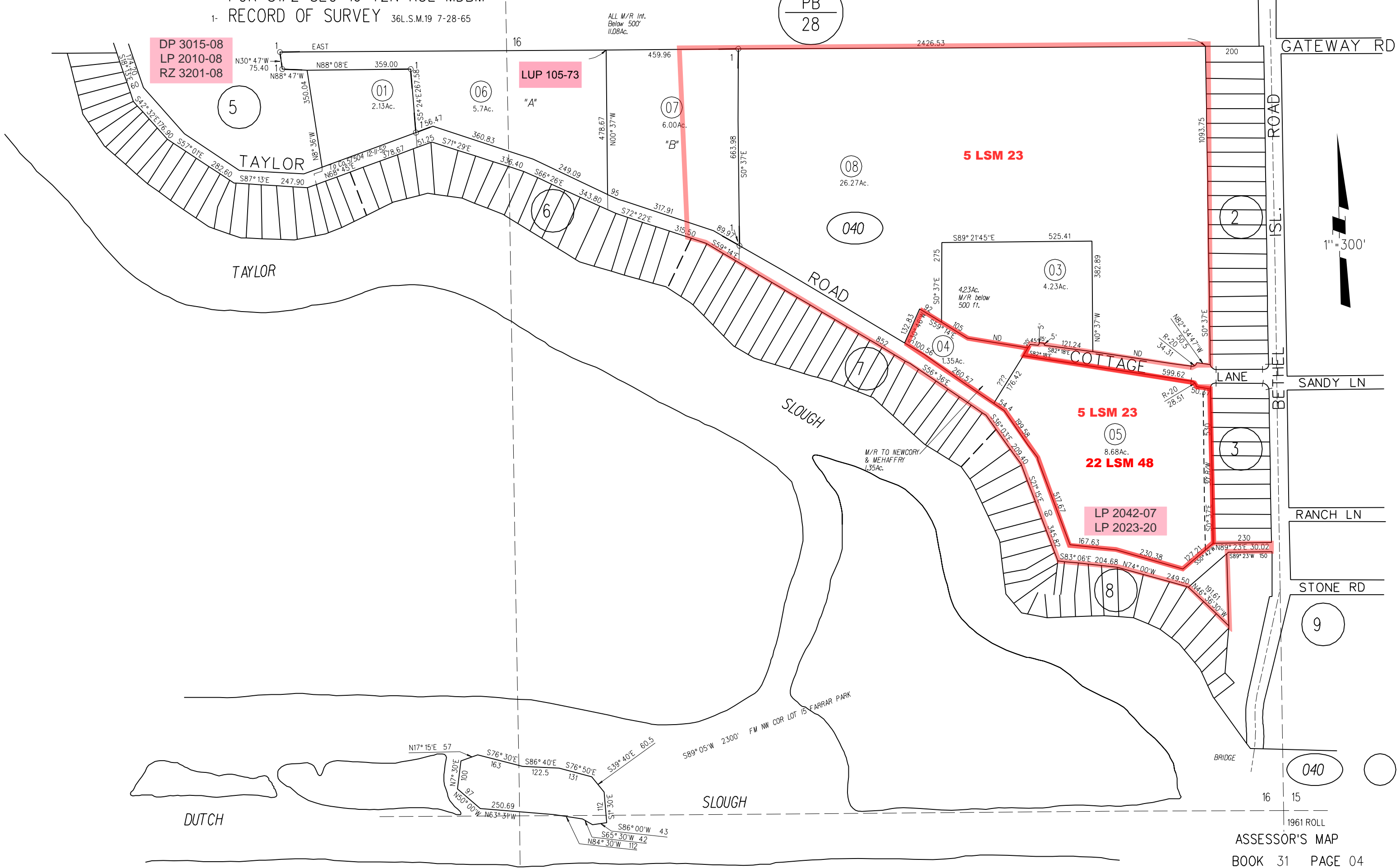
LUP 105-73

5 LSM 23

5 LSM 23

22 LSM 48

LP 2042-07
LP 2023-20



ASSESSOR'S MAP

BOOK 31 PAGE 04

107-20 CONTRA COSTA COUNTY, CALIF.