

POR W1/2 SEC 14 / POR S1/2 SEC 15 & POR N1/2 SEC 22

T2N R3E MDBM

"2006" A- POR TRACT 6013 MB 476-37 3/22/05 (DELTA COVES AT BETHEL ISLAND)

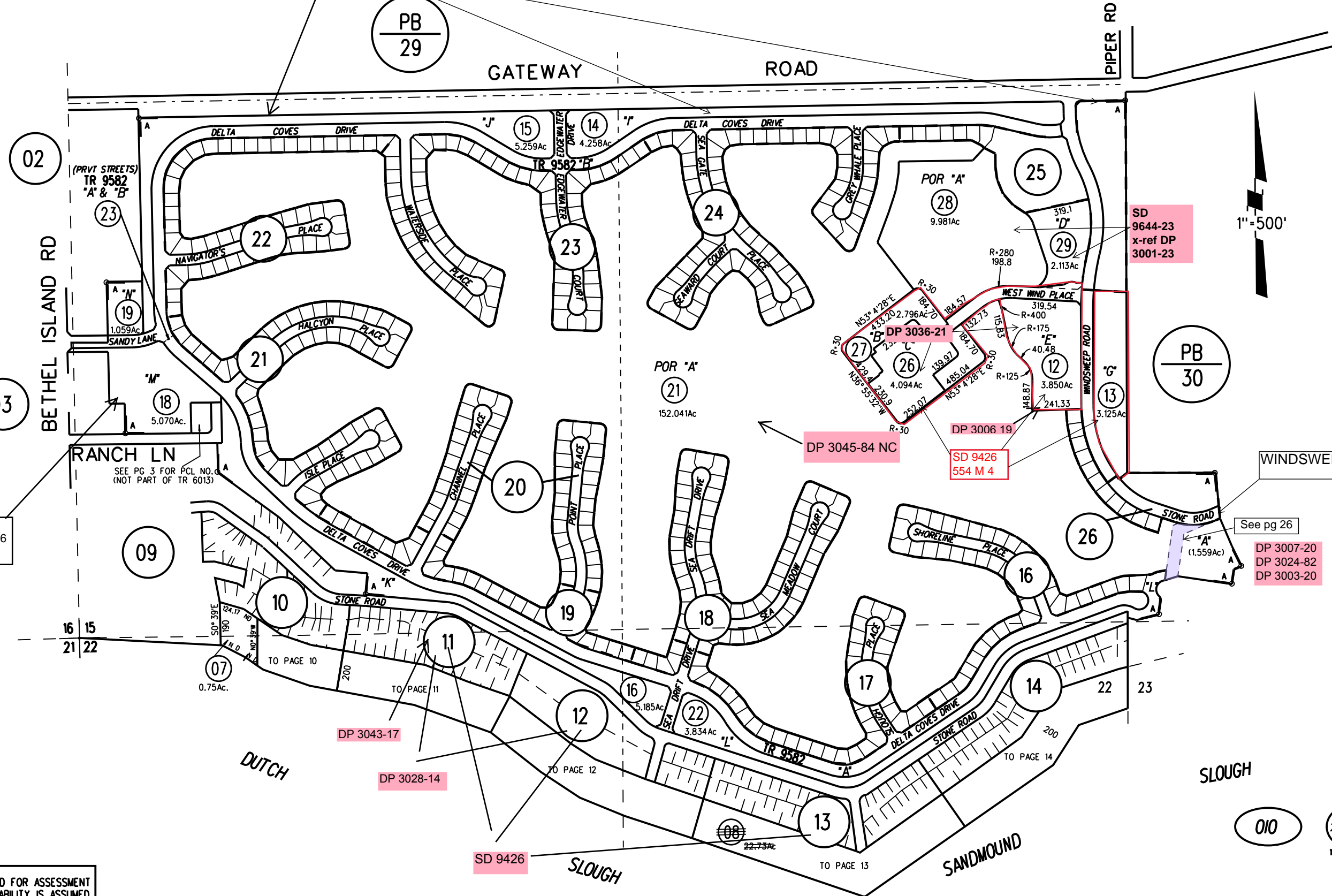
2023 - TR 9582 MB 550-9 3/16/22 (DELTA COVES STREETS) PCLS A, B & C

Off. Ded.
Doc #2008-0005133
01-09-08
Res. #2008/11

PB
29

GATEWAY ROAD

PIPER RD



Vacation
2018-0110956
7/12/2018

RANCH LN
SEE PG 3 FOR PCL NO.
(NOT PART OF TR 6013)

SD
9644-23
x-ref DP
3001-23

PB
30

WINDSWEEP RD

See pg 26
"A"
(1,559Ac)
DP 3007-20
DP 3024-82
DP 3003-20

NOTE: THIS MAP WAS PREPARED FOR ASSESSMENT PURPOSES ONLY. NO LIABILITY IS ASSUMED FOR THE ACCURACY OF THE INFORMATION DELINEATED HEREON. ASSESSOR'S PARCELS MAY NOT COMPLY WITH LOCAL LOT SPLIT OR BUILDING SITE ORDINANCES.

O10
25-29
11/15/22