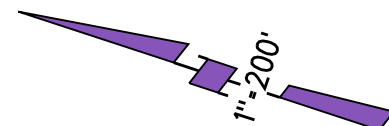


POR. SEC. 14 T2N R3E MDBM

1974-1- 29 P.M. 33 8-20-73

NOTE : SEE PAGE 17 FOR  
MINERAL RIGHTS ASSESMENT.



12

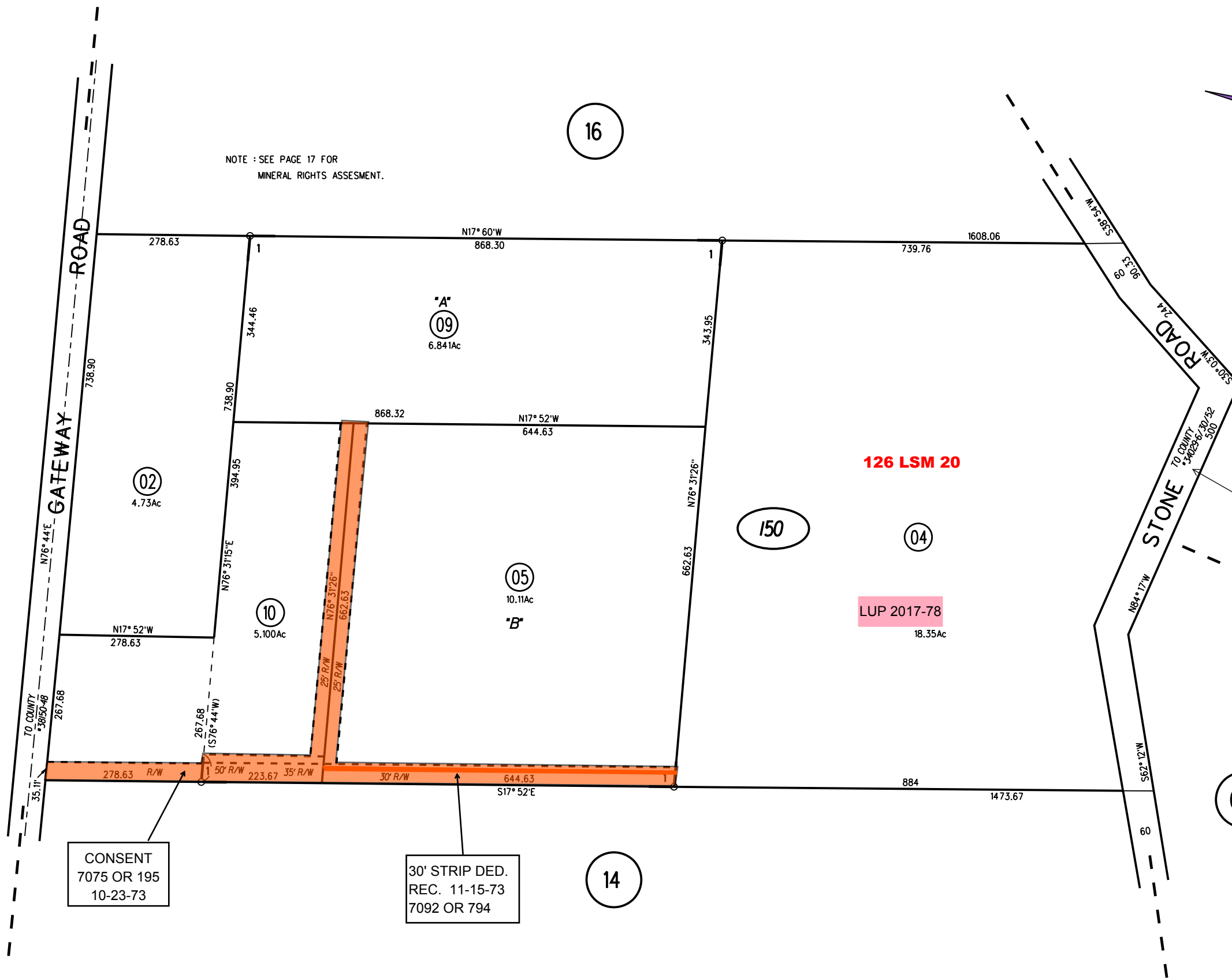
16

03

150

02

14



126 LSM 20

LUP 2017-78  
18.35Ac

STONE ROAD CHANGED TO  
WINDSWEEP ROAD VIA  
TRAFFIC RESOLUTION NO.  
2014/4410

CONSENT  
7075 OR 195  
10-23-73

30' STRIP DED.  
REC. 11-15-73  
7092 OR 794

NOTE: THIS MAP WAS PREPARED FOR ASSESSMENT  
PURPOSES ONLY. NO LIABILITY IS ASSUMED  
FOR THE ACCURACY OF THE INFORMATION  
DELINEATED HEREON. ASSESSOR'S PARCELS  
MAY NOT COMPLY WITH LOCAL LOT SPLIT  
OR BUILDING SITE ORDINANCES.

150 9.10  
1/12/17

1961 ROLL  
ASSESSOR'S MAP  
BOOK 30 PAGE 15

FM. 107-14 CONTRA COSTA COUNTY, CALIF.

Sanborn Date : 02/11/1999