

CORNER RECORD

Agency Index 223 cell
 Document Number -10398

City of PLEASANT HILL County of CONTRA COSTA, California
 Brief Legal Description LINE COMMON TO PARCELS B & D - (252 m²)



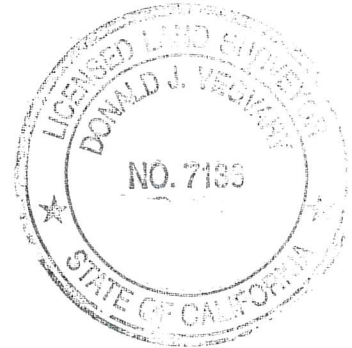
CORNER TYPE

COORDINATES (Optional)

Government Corner Control Elevation _____ N. _____ E. _____
 Meander Property Units Metric U.S. Survey Foot
 Rancho Other Horizontal Datum _____
 Date of Survey 10-13-20 Zone _____ Epoch Date _____
 Vertical Datum _____
 Complies with Public Resources Code §§8801-8819
 Complies with Public Resources Code §§8890-8902

PLS Act Ref.: 8765(d) 8771 8773 Other:
 Corner/Monument: Left as found Established Rebuilt Pre-Construction
 Found and tagged Reestablished Referenced Post-Construction

Narrative of corner identified and monument as found, set, reset, replaced, or removed:
 See sheet #2 for description(s):



SURVEYOR'S STATEMENT

This Corner Record was prepared by me or under my direction in conformance with
 the Professional Land Surveyors' Act on 10-16-20
 Signed [Signature] P.L.S. or R.C.E. No. 7136

COUNTY SURVEYOR'S STATEMENT

This Corner Record was received October 21st 2020
 and examined and filed November 5th 2020
 Signed [Signature] P.L.S. or R.C.E. No. 6571
 Title County Surveyor



County Surveyor's Comment
A.P.N. 153-362-108

CORNER RECORD

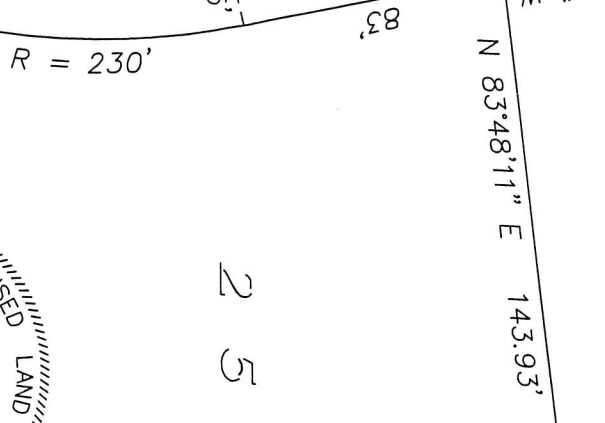
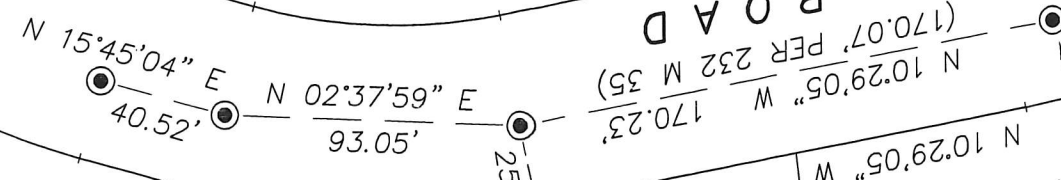
LINE COMMON TO PARCELS B & D
 "AMENDED SUB. 5191" - (252 M 12)

SURVEY DATE: OCTOBER 13, 2020

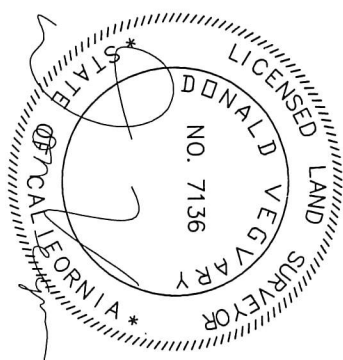
FOUND STANDARD STREET MONUMENT
 PER 232 M 35, WITH BRASS DISC
 STAMPED "R.C.E. 6131" (TYPICAL)

PARCEL B

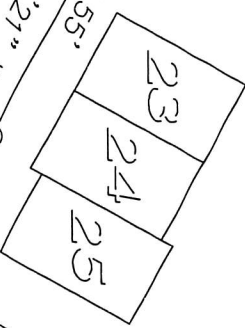
CAMELBACK ROAD



252 MJ 2



SET 5/8" REBAR & PLASTIC
 CAP, L.S. 7136



PARCEL D

SCALE: 1"=60'



DONALD VEGVARY
 LAND SURVEYOR
 3527 MT. DIABLO BLVD., #368
 LAFAYETTE, CA 94549
 (925) 947-1051

PARCEL C