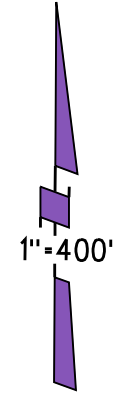
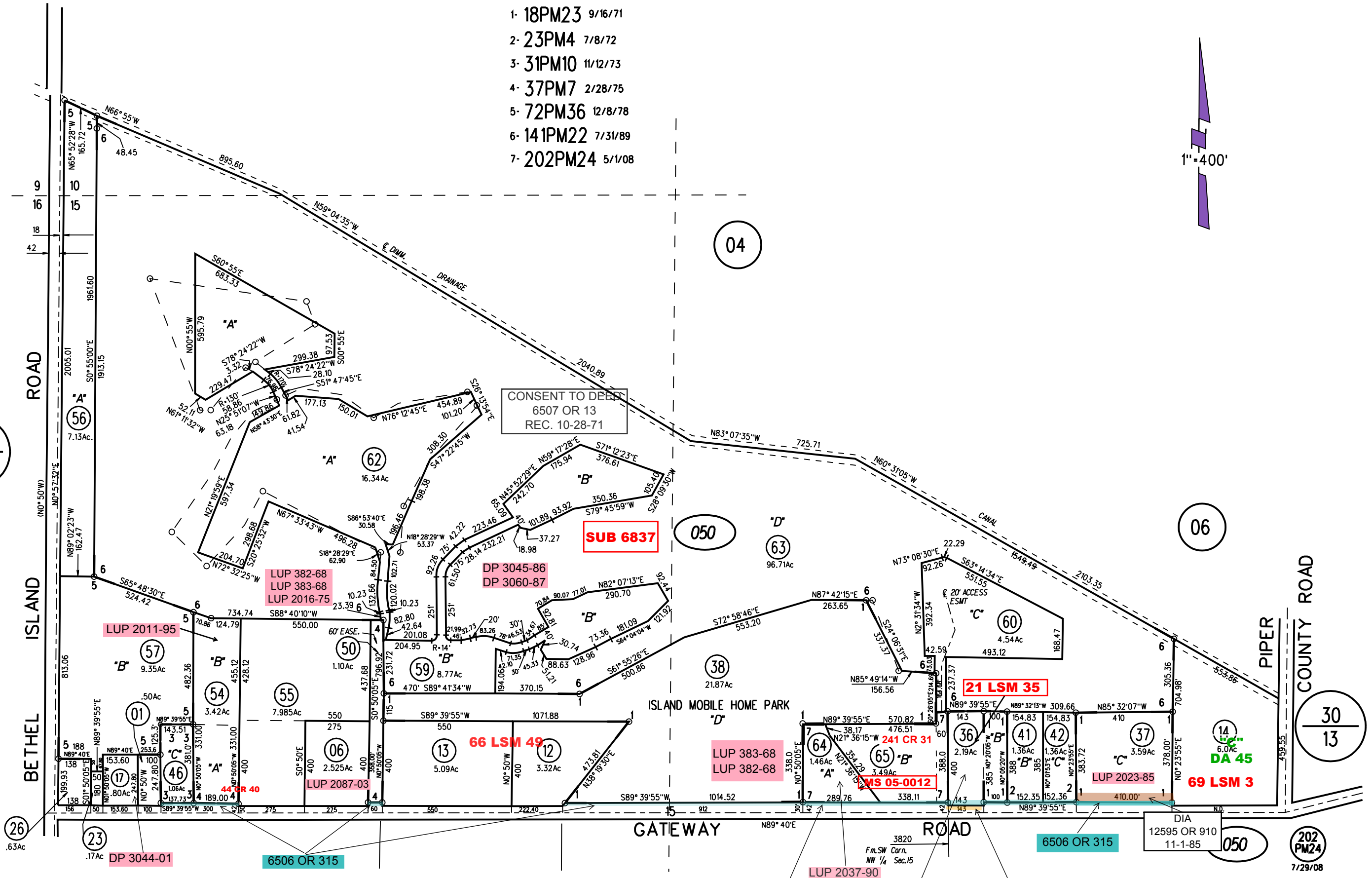


POR SW 1/4 SEC 10 & POR N 1/2 SEC 15 T2N R3E MDB&M

- 1- 18PM23 9/16/71
- 2- 23PM4 7/8/72
- 3- 31PM10 11/12/73
- 4- 37PM7 2/28/75
- 5- 72PM36 12/8/78
- 6- 141PM22 7/31/89
- 7- 202PM24 5/1/08



28
31



31
02

31
01

30
13