

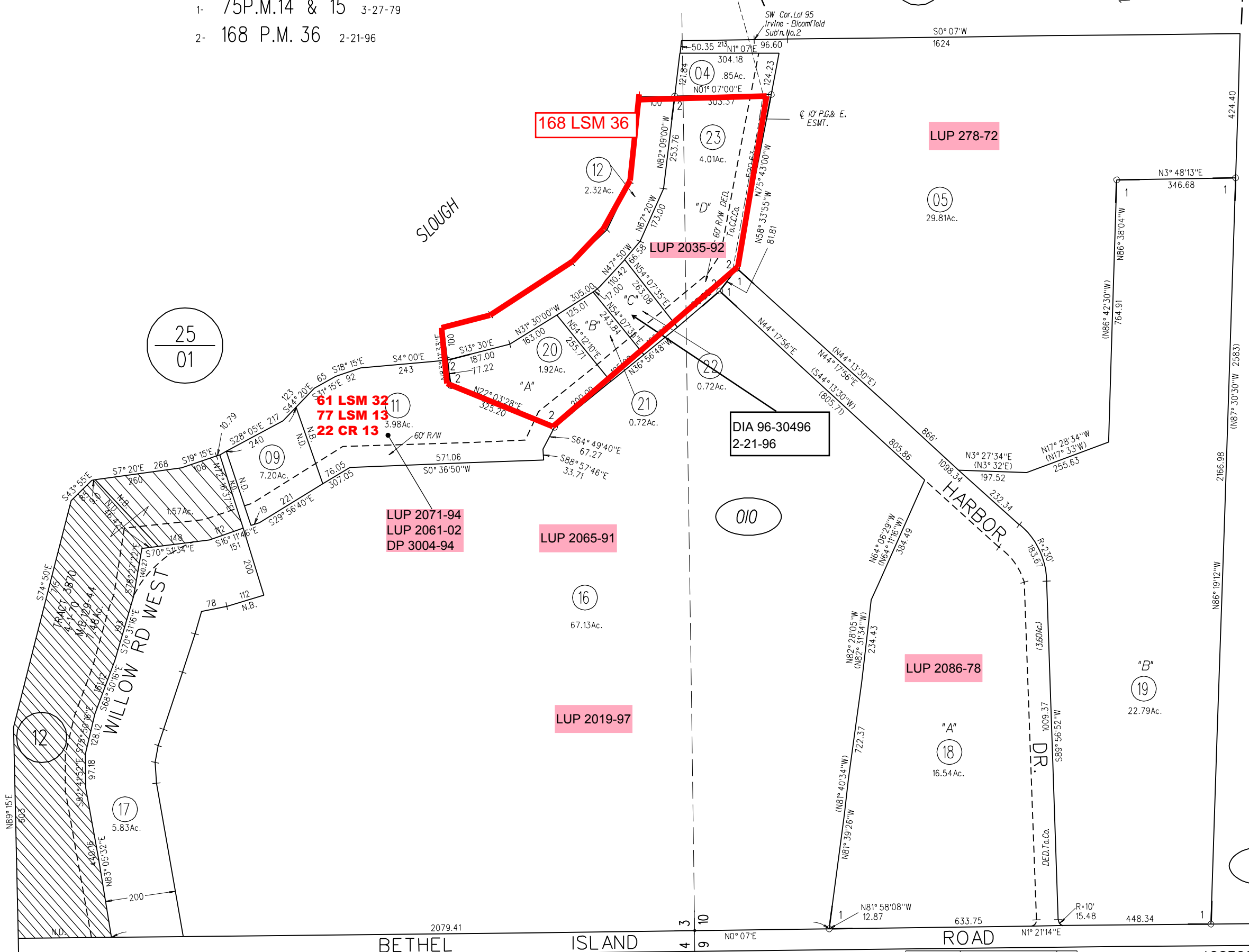
POR. SW 1/4 SEC. 3 & NW 1/4 SEC. 10 T2N R3E M.D.B.&M

- 1- 75P.M.14 & 15 3-27-79
- 2- 168 P.M. 36 2-21-96

02



PIPER



25
01

28
03

04

010

DATE	CHANGE	BY
4-4-96	168 P.M. 36	RF

ASSESSOR'S MAP
BOOK 29 PAGE 01
CONTRA COSTA COUNTY, CALIF.